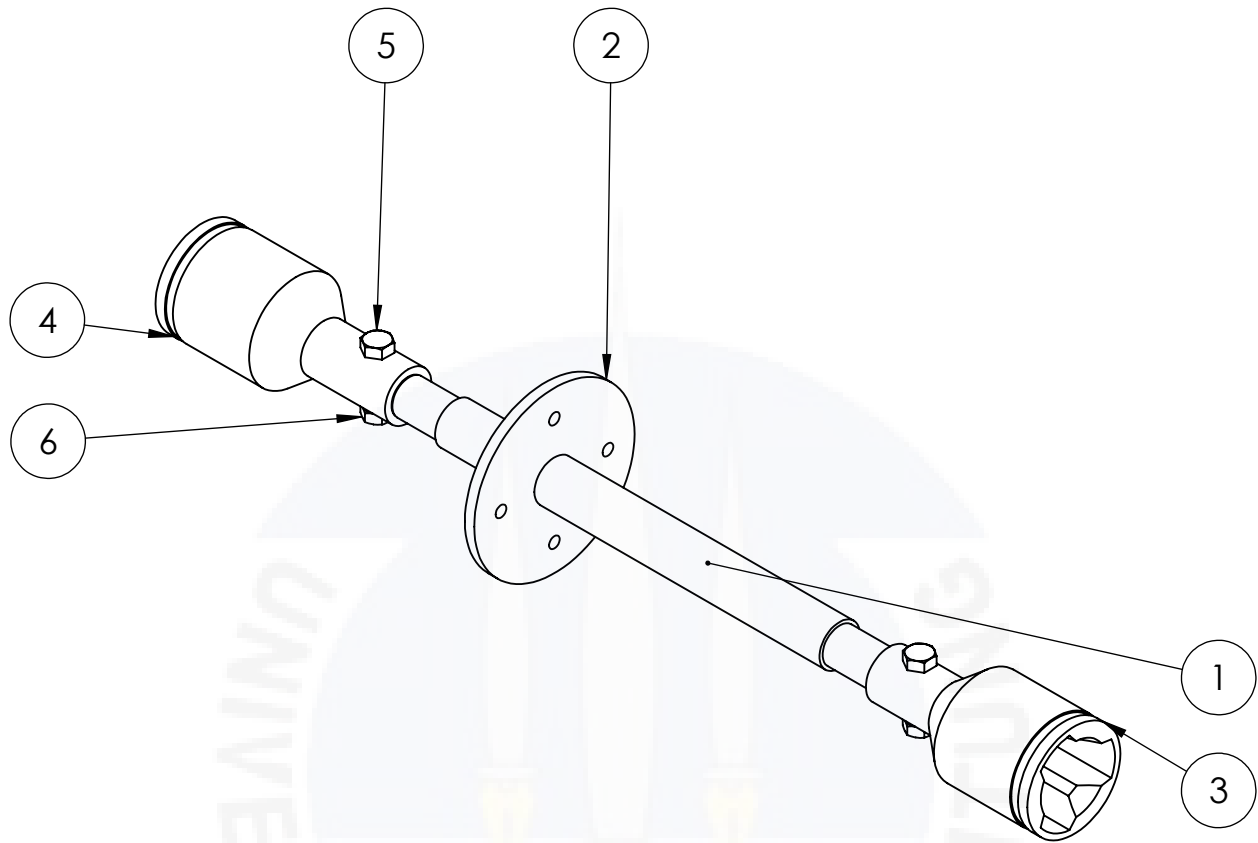




LAMPIRAN



No	Nama Part	Keterangan	Jumlah
1	Main Shaft	St 41 / ASTM A36	1
2	Adaptor Gear	St 41 / ASTM A36	1
3	CV Joint Kiri	St 41 / ASTM A36	1
4	CV Joint Kanan	St 41 / ASTM A36	1
5	Baut	M8 Grade 8.8	2
6	Mur	M8 Grade 8.8	2

UNLESS OTHERWISE SPECIFIED:
 DIMENSIONS ARE IN MILLIMETERS
 SURFACE FINISH:
 TOLERANCES:
 LINEAR:
 ANGULAR:

FINISH:

DEBUR AND
 BREAK SHARP
 EDGES

DO NOT SCALE DRAWING

REVISION

	NAME	SIGNATURE	DATE		
DRAWN	Alberto T.				
CHK'D	Firly Rosa				
APPV'D					
MFG					
Q.A					
				MATERIAL:	
				WEIGHT:	

TITLE:

Universitas Bangka Belitung

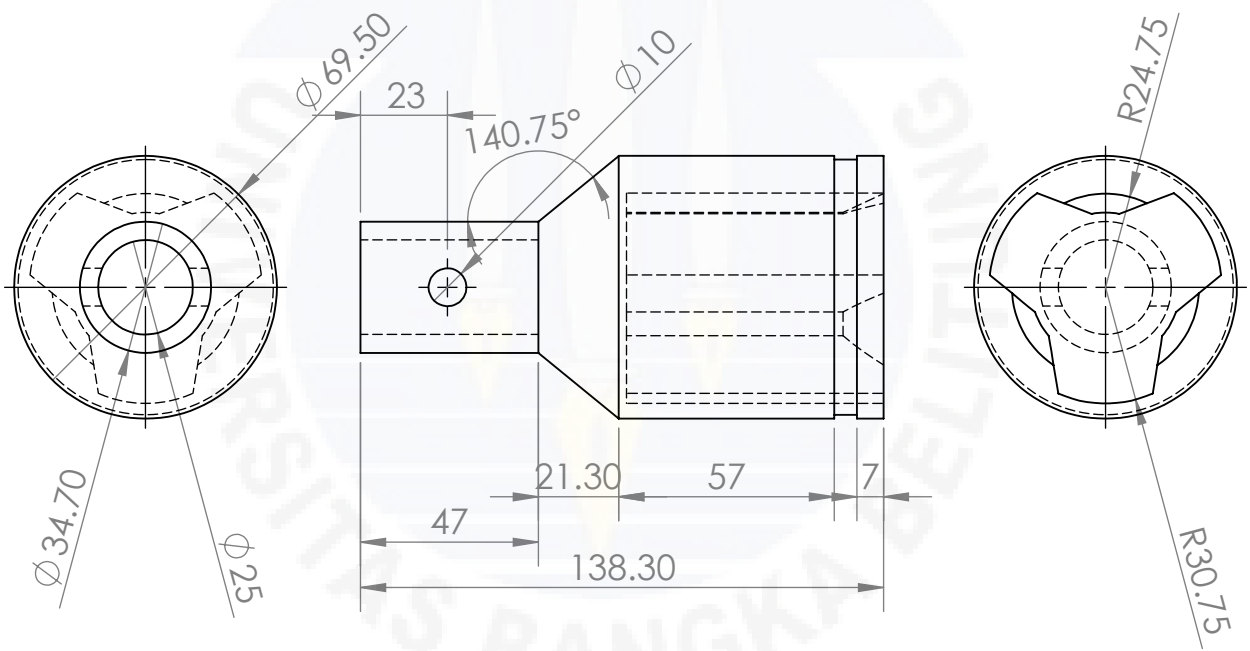
DWG NO.

Main Shaft Assembly

A4

SCALE: 1:4

SHEET 1 OF 4



UNLESS OTHERWISE SPECIFIED:
 DIMENSIONS ARE IN MILLIMETERS
 SURFACE FINISH:
 TOLERANCES:
 LINEAR:
 ANGULAR:

FINISH:

DEBURR AND
 BREAK SHARP
 EDGES

DO NOT SCALE DRAWING

REVISION

	NAME	SIGNATURE	DATE
DRAWN	Alberto T.		
CHK'D	Friya Rosa		
APPV'D			
MFG			
Q.A			

TITLE:

Universitas Bangka Belitung

MATERIAL:

DWG NO.

CV Joint Kanan

A4

WEIGHT:

SCALE:1:2

SHEET 2 OF 4

4 3 2 1

F

F

E

E

D

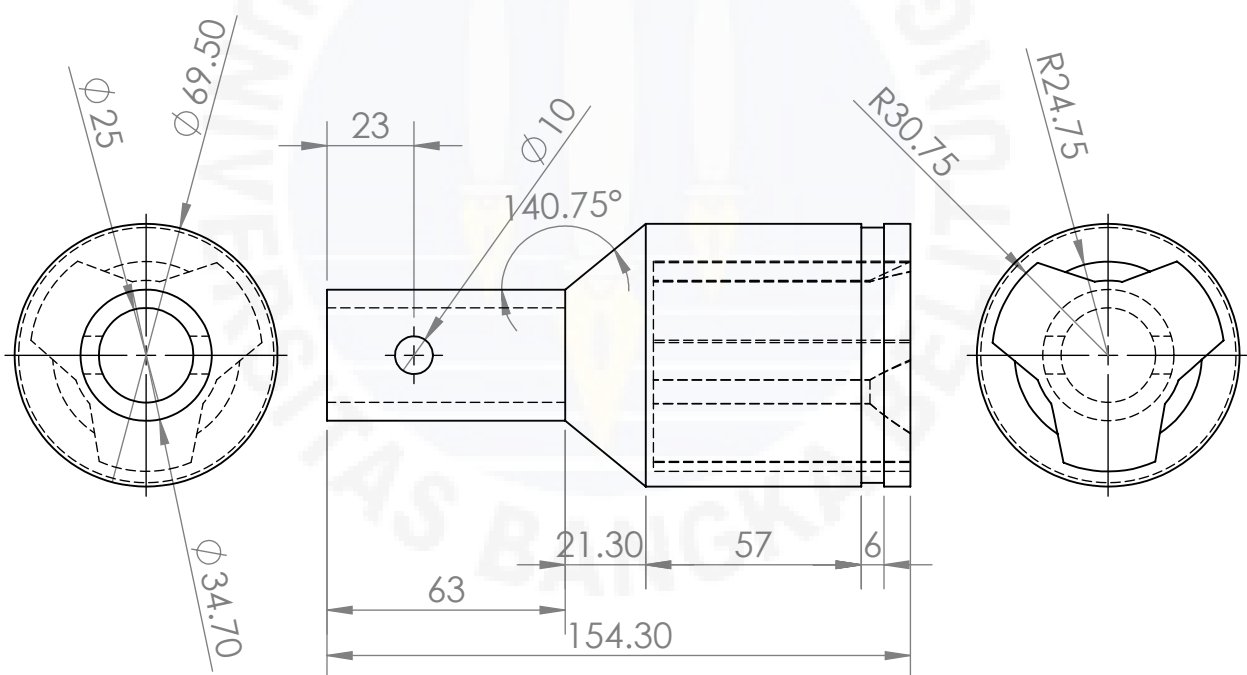
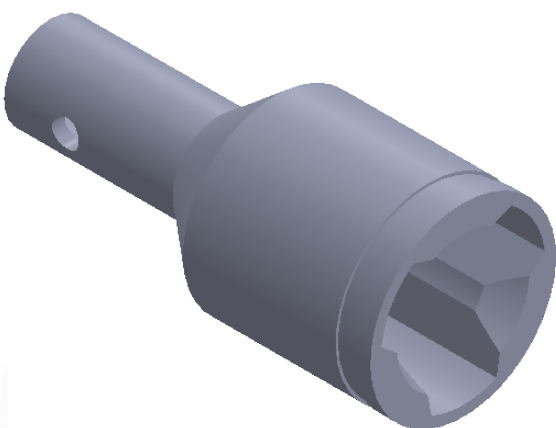
D

C

C

B

B



UNLESS OTHERWISE SPECIFIED:
DIMENSIONS ARE IN MILLIMETERS
SURFACE FINISH:
TOLERANCES:
LINEAR:
ANGULAR:

FINISH:

DEBURR AND
BREAK SHARP
EDGES

DO NOT SCALE DRAWING

REVISION

	NAME	SIGNATURE	DATE
DRAWN	Alberto T.		
CHK'D	Friya Rosa		
APPV'D			
MFG			
Q.A			

TITLE:
Universitas Bangka Belitung

MATERIAL:

DWG NO.

CV Joint Kiri

A4

WEIGHT:

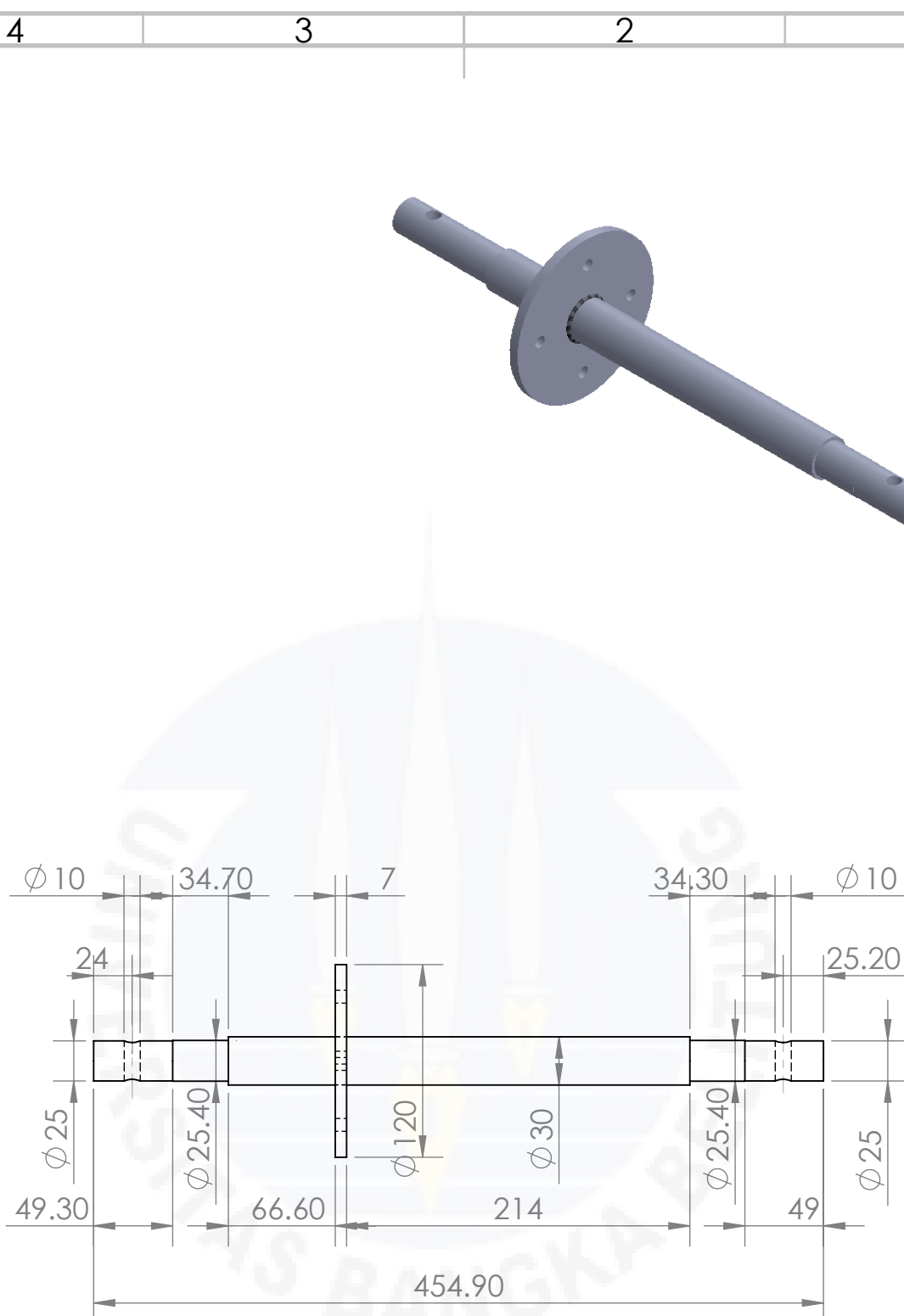
SCALE: 1 : 2

SHEET 3 OF 4

4 3 2 1

A

A



UNLESS OTHERWISE SPECIFIED:
 DIMENSIONS ARE IN MILLIMETERS
 SURFACE FINISH:
 TOLERANCES:
 LINEAR:
 ANGULAR:

FINISH:

DEBURR AND
 BREAK SHARP
 EDGES

DO NOT SCALE DRAWING

REVISION

	NAME	SIGNATURE	DATE
DRAWN	Alberto T.		
CHK'D	Friya Rosa		
APPV'D			
MFG			
Q.A			

TITLE:
Universitas Bangka Belitung

DWG NO. *Shaft*

MATERIAL:

WEIGHT:

SCALE: 1 : 4

SHEET 4 OF 4

A4

UNIVERSITAS BANGKA BELITUNG

ADDRESS :

TEL :

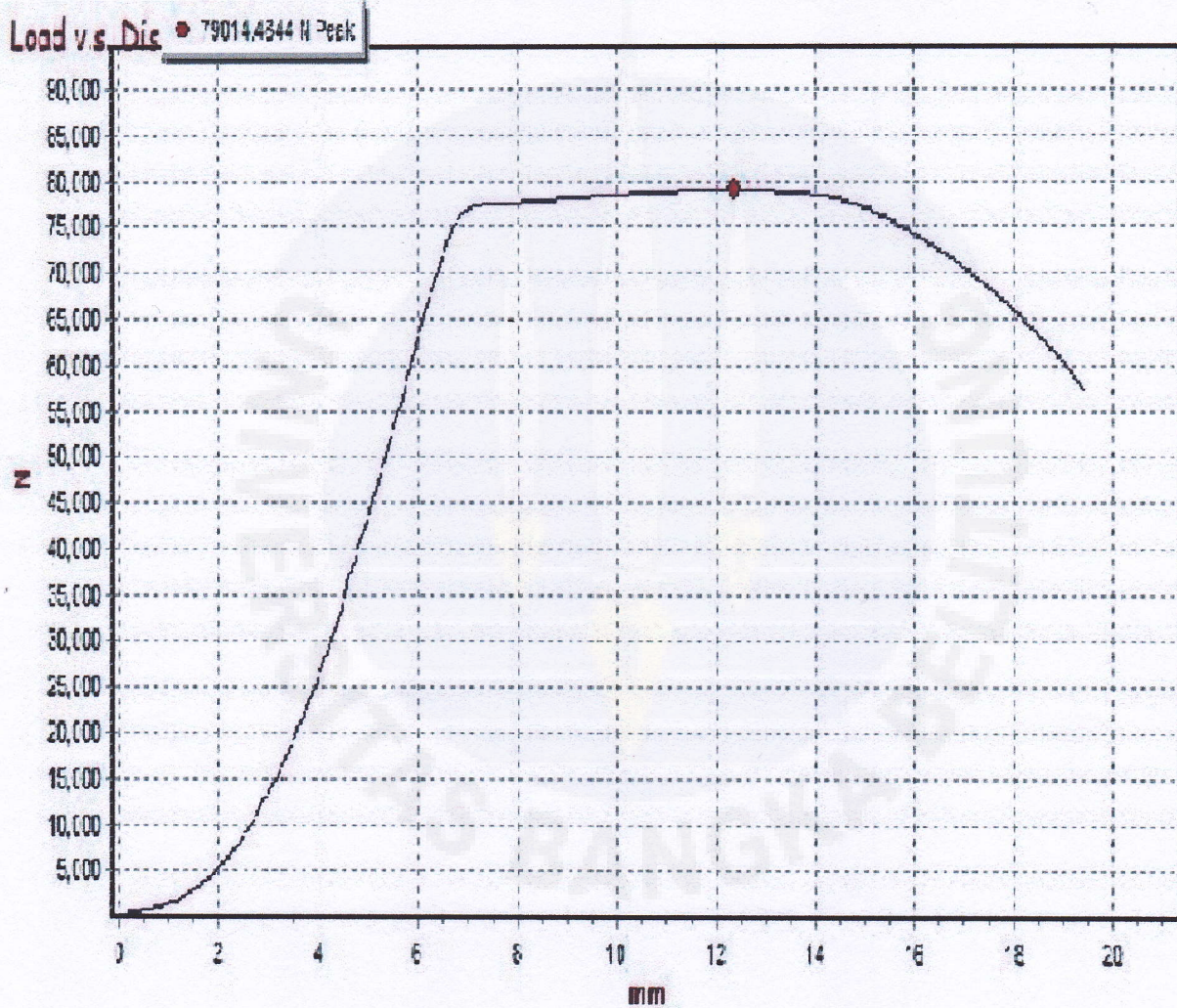
FAX :

TEST REPORT

Test NO. : POROS MOBIL

Test Description : 1

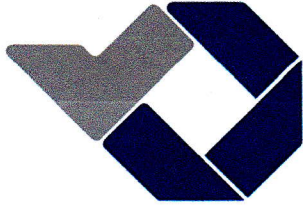
Specimens	Area mm ²	Max Force N	0.2% Y.S. N/mm ²	Yield Strength N/mm ²	Tensile Strength N/mm ²	Elongation %
Poros Mobil Listrik	143.139	79014.5	539.19	539.19	552.01	21.69



POROS MOBIL LISTRIK TRS V-001

Q.C. Dept. : Said Apreza

Tester : Alberto Stefan



KEMENTERIAN RISET, TEKNOLOGI, DAN PENDIDIKAN TINGGI
POLITEKNIK MANUFAKTUR NEGERI BANGKA BELITUNG
JURUSAN TEKNIK MESIN

Kawasan Industri Air Kantung Jalan Timah Raya SUNGAILIAT-BANGKA 33211;
Telp. 0717-93586/95252 ; Faks. 0717-93585
<http://www.polman-babel.ac.id> ; Email: polman@polman-babel.ac.id

SURAT KETERANGAN

Nomor : 0001/PL28.B1/PI/2017

Yang bertanda tangan dibawah ini, Ketua Jurusan Teknik Mesin Politeknik Manufaktur Negeri Bangka Belitung, dengan surat ini menerangkan bahwa:

Nama : Alberto Stevan Tarigan
NIM : 1011311002
Jurusan : Teknik Mesin Universitas Bangka Belitung

Selama mengerjakan Tugas Akhir yang berjudul Analisa Tegangan dan Kelelahan Poros Penggerak Mobil Listrik Tarsius V 6.0, yang bersangkutan benar telah menggunakan software solidworks 2016 educational version di Laboratorium Gambar Jurusan Teknik Mesin Politeknik Manufaktur Negeri Bangka Belitung

Demikian surat keterangan dibuat, untuk dipergunakan sebagai mana mestinya. Atas perhatiannya diucapkan terima kasih.

Sungailiat, 25 Juli 2017
Ketua

Somawardi, M.T
NIP. 197504212015041001