

## The 9th International Conference on Mine Closure in Johannesburg, South Africa

### Mine Closure 2014 Abstract Template

**Title of Paper:**

Impact of tin mining on the biota of Bangka Island, Indonesia – a proof to convince the tin supply chain of smartphones companies

**Authors (full names, affiliation and name of institute or company):**

Eddy Nurtjahya – Universitas Bangka Belitung, Indonesia

Umroh – Universitas Bangka Belitung, Indonesia

Fournita Agustina – Universitas Bangka Belitung, Indonesia

**Corresponding author's contact details (email, telephone fax):**

eddy\_nurtjahya@yahoo.com; phone: +62717422965; fax.: +62717421303

**Abstract (500 words maximum):**

Tin mining in Bangka Belitung islands has is about hundred years old. The islands are the largest tin producing islands in the world, second after China. Tin was exploited by the local people long time before the monopoly of VOC – a Dutch trading company in 18<sup>th</sup> century.

From the occupation until the independence era, the local people had not been involved in mining. In 1999 the Department of Trade and Industry changed the tin trading status so that tin is not an export item to be watched over and regulated. This was followed by the issuance of the Bangka regent decree to legalize mining for people. That was a false perception, however believed by local government and people. While the excitement of freely mining is difficult to stop, the law enforcement proved to be weak. On one hand tin mining activities increase the wealth of the people, on the other hand they change and decrease the environmental stability.

Unconventional miners (tambang inkonvensional – TI), the term used to describe local small scale tin mines, have expanded significantly since 2000. Unfortunately most of the TI activities are being carried out without regard to good mining practices, safety of land reclamation.

In the last two years, local, national and international environmental non-government organizations (NGOs) have increased their campaign against exported tin ingot produced by non-standard practices. A foreign investigation found that it is highly likely that a smartphone has illegal Bangkanese tin in it. Huge foreign coverage in the media has given trouble to some smartphones companies, and local private miners and smelter owners. At the end of 2013, an international seminar to facilitate discussion on that issue was held in Pangkalpinang, Bangka Island. It was attended by some overseas smartphones representatives, local and international consultants, local and international environmental NGOs, local government, local private miners and smelter owners, and academics.

Pluses and minuses of tin mining activities mostly by TI miners with regard to socioeconomic aspects, including the destruction of infrastructure, seem no objection in the reports, but the biological aspects do have substance. As a proof to convince tin supply chain to smartphone companies, this paper presents some evidence on the negative impact of non-standard tin mining operations to land and off-shore biotas. The decrease of biodiversity on the land system, in land and off-shore water bodies, and some oceanic biotas is discussed.

**Keywords:** good mining practices, small scale mining, NGO, smartphones companies, local private and smelter owners.

**RE: Abstract for Mine Closure 2014**

From: MC2014 Proceedings (proceedings@mineclosure2014.com)

To: eddy\_nurtjahya@yahoo.com

Date: Tuesday, 13 May 2014, 00:21 GMT+7

Dear Mr. Nurtjahya,

We are pleased to inform you that your abstract submission entitled "**Impact of tin mining on the biota of Bangka Island, Indonesia – a proof to convince the tin supply chain of smartphones companies**" has been successful, and you are invited to submit your full paper for review and publication in the MC2014 proceedings.

**Deadlines:**

- The deadline for submission of full papers for us to review is **15 June 2014**. Please submit your **signed Copyright Form** along with it.
- The deadline for submission of final corrected papers is **15 July 2014**.

**Attached, please find the following documents:** (also available for download from [http://www.acg.uwa.edu.au/publications/authors\\_comer](http://www.acg.uwa.edu.au/publications/authors_comer))

- Copyright form
- Author Guidelines
- Style Template
- Author's Paper Checklist
- Example Biography Notes
- A Sample Paper from MC2008

**Notes:****1. Layout:**

The ACG requests that Authors follow detailed instructions to prepare their print-ready manuscripts for inclusion in our Conference proceedings and publications. These instructions are available in PDF and as MS Word templates. If you have any queries regarding formatting, please contact the ACG (email: [info-acg@uwa.edu.au](mailto:info-acg@uwa.edu.au)).

**2. Speakers' Presentations:**

If your paper is selected to be published in the Proceedings, you will also be required to present your paper at the Conference. If that is the case, we will also require you to submit a Microsoft Powerpoint presentation and a Presenter Biography a month before the conference.

Kind regards,

**Alexandra Wald**

**9<sup>th</sup> International Conference on Mine Closure (MC2014)**

Ecological Engineering and Phytotechnology Programme

School of Animal, Plant and Environmental Sciences (AP&ES)

University of the Witwatersrand

Johannesburg

South Africa

Email: [alexandra.wald@wits.ac.za](mailto:alexandra.wald@wits.ac.za)

Tel: +27 11 717 6440

# MINE CLOSURE 2014

9TH INTERNATIONAL CONFERENCE ON MINE CLOSURE

1-3 October 2014, Sandton Convention Centre, Johannesburg, South Africa

**HOSTED BY:** WITS: The University of the Witwatersrand, Johannesburg, South Africa, on behalf of the Australian Centre for Geomechanics (FOUNDING BODY). **COLLABORATING ORGANISATION:** Cranfield University, United Kingdom.

**MAJOR SPONSOR:** THRIIP (Technology & Human Resources for Industry Programme), an initiative of the DTI (Department of Trade & Industry of South Africa) and the National Research Foundation of South Africa (NRF)



## MC 2014 1-3 OCTOBER SCC JOHANNESBURG

**THEME:** Transforming Wastes to Resources, in order to Re-value Mining Liabilities in a Changing World.

**OBJECTIVE:** The global forum for exchanging knowledge and developing capacity to ensure that new mines are designed for compliance, and old sites are closed economically, whilst minimizing environmental and societal impacts.

## MC 2014 EVENTS CALENDAR

Mon 29 – Tues 30 Sept 2014:  
Pre-Conference Courses

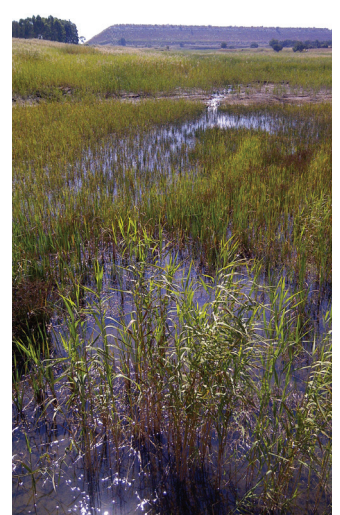
Tues 30 Sept 2014 (17h00 – 20h00):  
Welcome Cocktail Function & Pre-registration

Tues 30 Sept – Fri 3 Oct 2014:  
Exhibition (Industry, Investors, Regulators, Entrepreneurs and Academia)

Wed 1 – Fri 3 Oct 2014:  
Mine Closure 2014 Conference

Thurs 2 Oct 2014 (19h00 – 24h00):  
Gala Dinner

Sat 4 – Mon 6 Oct 2014:  
Post-Conference Visits (tbc)



## MC 2014 CONFERENCE THEMES & PROGRAMME

- Socio-economics, Policy, Regulation & Finance for Mine Closure
- Planning, Modelling & Monitoring Tools for Mine Closure
- Design & Construction for Mine Closure
- Mining Legacies
- Reclamation, Remediation, Rehabilitation & Restoration
- Opportunities from Mine Closure
- Mine Exploration
- Ancient and Historical Mines
- Artisanal and Small-scale Mining
- Social Ecology
- Sustainable Livelihoods
- Mine Transformation or Closure
- Mine Closure and Climate Change

# MINE CLOSURE 2014

## 9TH INTERNATIONAL CONFERENCE ON MINE CLOSURE

1-3 October 2014, Sandton Convention Centre, Johannesburg, South Africa

### THIRD ANNOUNCEMENT AND CALL FOR PAPERS

#### CALL FOR PAPERS – SUBMISSION OF ABSTRACTS

Intending authors are invited to submit abstracts by 14 May 2014 (Final Abstract Submission Date) to the University of the Witwatersrand, Johannesburg via [www.mineclosure2014.com](http://www.mineclosure2014.com) or [proceedings@mineclosure2014.com](mailto:proceedings@mineclosure2014.com)

The official language of the Conference Proceedings is English, although simultaneous translation between French and English will be available during the conference.

Abstracts should be submitted as a word processor document in English or French, and limited to a maximum of 500 words.

The abstract should provide the aim and general scope of the work, summary of the results, and significance of the applications. It must also include the title, author/s names and affiliation/s, and the corresponding author's address, email, telephone and fax numbers.

Authors will be notified of abstract acceptance by 15 May 2014 and invited to submit a full paper for review via email. All accepted papers will be published in the Mine Closure 2014 Conference Proceedings.

#### EXHIBITION AND SPONSORSHIP – BE PART OF MINE CLOSURE 2014

This event is the global platform for mining companies and service providers to position their organisation and skills with respect to Mine Closure: compliance, transformation of liabilities, and sustainable development.

Please contact [info@mineclosure2014.com](mailto:info@mineclosure2014.com) for Sponsorship Packages and information about the Exhibition for Industry, Investors, Regulators, Entrepreneurs and Academics.

#### EXPRESSION OF INTEREST

Attendee  Presenter  Sponsor  Exhibitor

Name: .....

Position: .....

Organization: .....

Address: .....

.....

Country: .....

Postal Code: .....

Phone: .....

Fax: .....

Email: .....

#### PLEASE SUBMIT YOUR EXPRESSION OF INTEREST TO:

[info@mineclosure2014.com](mailto:info@mineclosure2014.com)

Phone: 0027 (0)11 717 6440 / Fax: 0027 (0)11 717 6494

School of Animal, Plant & Environmental Sciences,  
University of the Witwatersrand, Johannesburg  
Private Bag 3  
P.O. WITS 2050 SOUTH AFRICA  
[www.mineclosure2014.com](http://www.mineclosure2014.com)



# MINE CLOSURE 2014

## 9TH INTERNATIONAL CONFERENCE ON MINE CLOSURE

1-3 October 2014, Sandton Convention Centre, Johannesburg, South Africa

[www.mineclosure2014.com](http://www.mineclosure2014.com) / [info@mineclosure2014.com](mailto:info@mineclosure2014.com) / [www.saconvention.co.za](http://www.saconvention.co.za)

## PROCEEDINGS

### THE BOOK OF PROCEEDINGS OF THE 9TH INTERNATIONAL CONFERENCE ON MINE CLOSURE: MINE CLOSURE 2014

We apologise to the authors and attendees for the long delay in the publication of the MC2014 proceedings.

Mine Closure 2014 book of proceedings will be published in electronic format as Open Access on this website - you can download the Mine Closure 2014 book here at no cost when it becomes available. **The download link is currently being updated.**

Mine Closure 2014 is also being published on DVD for all conference attendees, and as printed books for those attendees who have ordered this.

The Mine Closure 2014 proceedings are in English (full papers) and French (paper abstracts).

For queries, please email [proceedings@mineclosure2014.com](mailto:proceedings@mineclosure2014.com)

---

### TABLE OF CONTENTS - MINE CLOSURE 2014

- i The University of the Witwatersrand, Johannesburg, the Australian Centre for Geomechanics at the University of Western Australia, and collaborating organisation Cranfield University
- ii Sponsor - Technology and Human Resources for Industry Programme (THRIP) of the Department of Trade and Industry of South Africa and the National Research Foundation
- iii Organising and Advisory Committee
- iv Reviewers
- v Preface
- vi Acknowledgements

## NEW LANDSCAPES: METAL ENRICHMENT

- **Mercury pollution and speciation in historical gold mining areas: case studies in the Witwatersrand Basin** *J.G. Lusilao-Makiese, University of the Witwatersrand, Johannesburg, South Africa; E.M. Cukrowska, University of the Witwatersrand, Johannesburg, South Africa; H. Tutu, University of the Witwatersrand, Johannesburg, South Africa; L. Chimuka, University of the Witwatersrand, Johannesburg, South Africa; I.M. Weiersbye, University of the Witwatersrand, Johannesburg, South Africa*
- **Small mammals as indicators of mercury bio-accumulation in a gold mining region of South Africa** *C.H. Davies, University of the Witwatersrand, Johannesburg, South Africa; D.C. Drake, University of the Witwatersrand, Johannesburg, South Africa; M. Keith, Center for Wildlife Management, University of Pretoria; University of the Witwatersrand, Johannesburg, South Africa*
- **Invisible hazards - a review of potential risks to human health through consumption of leafy vegetables in a historic mining region** *J. Botha, University of the Witwatersrand, Johannesburg, South Africa; I.M. Weiersbye, University of the Witwatersrand, Johannesburg, South Africa*
- **Characterization and decontamination of metallurgical waste and soil in a town impacted by a former lead smelter's environmental liabilities** *J.A. Vidalón, CESEL S.A., Peru*
- **Impact of tin mining on the biota of Bangka Island, Indonesia - a proof to convince the tin supply chain of smartphones companies** *E. Nurtjahya, Universitas Bangka Belitung, Indonesia; U. Umroh, Universitas Bangka Belitung, Indonesia; F. Agustina, Universitas Bangka Belitung, Indonesia*
- **Heavy metal assessment in soils of North-East Lubumbashi (Katanga Province), Democratic Republic of Congo** *B.B. Muhaya, University of Lubumbashi, Democratic Republic of Congo; A. Bukas, University of Lubumbashi, Democratic Republic of Congo; F.T. Lubala, University of Lubumbashi, Democratic Republic of Congo; P.K. Kaseti, University of Lubumbashi, Democratic Republic of Congo; J.B. Mugisho, University of Lubumbashi, Democratic Republic of Congo*
- **Management of mineral and metallurgical tailings of the Congolese Copperbelt : Environmental stakes and perspectives** *A. Kaniki Tshamala, Department of Industrial Chemistry, University of Lubumbashi, Democratic Republic of Congo*

## TOPICAL ISSUES - KEYNOTE SPEAKERS

- **Mine site rehabilitation – laying geotechnical foundations** *D. Williams, University of Queensland, Australia*
- **Facilitating dereliction? How the South African legal regulatory framework enables mining companies to circumvent closure duties** *T. Humby, University of the Witwatersrand, Johannesburg, South Africa*
- **South Africa's mine waste rehabilitation 1910-1991 - Personalities, economics, organisations and legislation that shaped the development of an applied science** *M. Reichardt, PE International, South Africa; E.T.F. Witkowski, University of the Witwatersrand, Johannesburg, South Africa*
- **Innovative rehabilitation of marine dredge spoil** *E. Howard, Landloch Pty Ltd, Australia; S. Lowe, BHP Billiton Iron Ore, Australia*
- **The Mine Woodlands Project - trees for control of acid mine drainage in South Africa** *P.J. Dye, University of the Witwatersrand, Johannesburg, South Africa; I.M. Weiersbye, University of the Witwatersrand, Johannesburg, South Africa; M. Govender, University of the Witwatersrand, Johannesburg, South Africa; M.S. Crichton, University of the Witwatersrand, Johannesburg, South Africa; S.F. Grindley, University of the Witwatersrand, Johannesburg, South Africa*

## SOCIO-ECONOMIC ASPECTS

- **Planning for closure – dealing with socio-economic impacts in aboriginal communities** *H.D. Smith, HDS Technical Management and Consulting Pty Ltd, Australia*
- **Dealing with mining legacies: from bonds to a central mining rehabilitation fund in Western Australia** *P. Gorey, Department of Mines and Petroleum, Western Australia; A. Morrison-Saunders, Murdoch University, Australia / North West University, South Africa; D. Doepel, Murdoch University, Australia; H. Mtegha, University of Witwatersrand, Johannesburg, South Africa; M.P. McHenry, Murdoch University, Australia*

## SOCIO-ECONOMIC ASPECTS

- **Planning for closure – dealing with socio-economic impacts in aboriginal communities** *H.D. Smith, HDS Technical Management and Consulting Pty Ltd, Australia*
- **Dealing with mining legacies: from bonds to a central mining rehabilitation fund in Western Australia** *P. Gorey, Department of Mines and Petroleum, Western Australia; A. Morrison-Saunders, Murdoch University, Australia / North West University, South Africa; D. Doepel, Murdoch University, Australia; H. Mtegha, University of Witwatersrand, Johannesburg, South Africa; M.P. McHenry, Murdoch University, Australia*
- **Planning for mine closure in sub-Saharan Africa – taking urban development and artisanal miners into account** *D. Limpitlaw, Centre for Sustainability in Mining and Industry, University of the Witwatersrand, Johannesburg, South Africa; C. Digby, Centre for Sustainability in Mining and Industry, University of the Witwatersrand, Johannesburg, South Africa*
- **Enhancements in mine closure planning in Western Australia and possible applications for Africa** *A. Morrison-Saunders, Murdoch University, Australia / North West University, South Africa; P. Gorey, Department of Mines and Petroleum, Western Australia; D. Doepel, Murdoch University, Australia; H. Mtegha, University of Witwatersrand, South Africa; M.P. McHenry, Murdoch University, Australia*
- **Practical closure planning for small mining operations** *H.J.J. Boshoff, Water and Environment, O'Kane Consultants, Australia*
- **Taking risk management to the next level to enable solid decision-making on priorities and funding** *J. Nelson, WorleyParsons, Canada; R.L. Morton, WorleyParsons, Polestar*

## SOCIO-ECOLOGICAL AND ECONOMIC ASPECTS

- **Application of human health risk assessment for mine rehabilitation strategy design, Kabwe, Zambia** *T.M. Williams, Schlumberger Water Services, South Africa*
- **From Mine to Life Cycle Closure: towards a vision for the West Rand, Johannesburg** *W. Wambecq, University of Leuven, Belgium; T. Toffah, University of the Witwatersrand, Johannesburg, South Africa; B. De Meulder, University of Leuven, Belgium; H. le Roux, University of the Witwatersrand, Johannesburg, South Africa*
- **Mine-induced earthquakes and their effect on local infrastructure** *H.C. Uzuegbo, University of the Witwatersrand, Johannesburg, South Africa*
- **Rehabilitation and mine closure liability: an assessment of the accountability of the system to communities** *R.D. Krause, University of the Witwatersrand, Johannesburg, South Africa; L.G. Snyman, University of the Witwatersrand, Johannesburg, South Africa*
- **Issues facing South African mines preparing for and implementing closure** *J.A. Lake, SRK Consulting, South Africa; B.F. Liber, SRK Consulting, South Africa*
- **Artisanal and small-scale mining as a challenge and possible contributor to sustainable development** *T. Zvarivadza, University of the Witwatersrand, Johannesburg, South Africa*
- **Risk-based legacy liabilities portfolio prioritization and sequencing process and tool** *J.G. Nelson, WorleyParsons, Canada; M. Kruzic, WorleyParsons, Canada; H. Arangies, WorleyParsons, South Africa*
- **Mine closure in South Africa: a survey of current professional thinking and practice** *M. Milaras, University of Johannesburg, South Africa; F. Ahmed, University of the Witwatersrand, Johannesburg, South Africa; T.J.M. McKay, University of South Africa, South Africa*
- **The great divide between mine closure goals and outcomes, and potential solution** *N. Slingerland, University of Alberta, Canada; M. Baida, WAX Design, Australia; G.W. Wilson, University of Alberta, Canada*

## NEW LANDSCAPES: MONITORING AND MODELLING

- **Joint remediation of three of Wismut's abandoned uranium mining sites in Johangeorgenstadt / Ore mountains (Germany)** U. Barnekow, Wismut GmbH, Germany; R. Marski, Wismut GmbH, Germany; M. Bauroth, Wismut GmbH, Germany; J. Regner, Wismut GmbH, Germany; M. Speer, Wismut GmbH, Germany
- **Open pit mining closure in Lusatia – new landscapes and lakes** U. Alisch, Fugro Consult GmbH, Germany; S. Kuhn, Fugro Consult GmbH, Germany
- **Mine closure and long term consequential damages in lignite mining - lake side investigation and monitoring for a landslide** R. Balthes, Fugro Consult GmbH, Germany; R. Quas, Fugro Consult GmbH, Germany
- **Contribution of Earth Observation to monitoring environmental and societal impacts during the mining life cycle** S. Chevrel, French Geological Survey - BRGM, France; C. Jordan, British Geological Survey, UK; C. Fischer, DLR - German Aerospace Agency, Germany; E. Ben Dor, Tel Aviv University, Israel; P. Schepelmann, Wuppertal Institute for Climate, Energy and Environment, Germany; H. Hejny, Mineral Industry Research Organisation, UK; H. Coetzee, Council for Geoscience, South Africa
- **The watershed as unit of study for the Mine Closure Plan: a Brazilian perspective** A. Jeber, Environmental Resources Management (ERM) Brazil; R.C. Faria, Vale, Brazil; N. Rivello, Vale, Brazil; R. Oliveira, Environmental Resources Management (ERM) Brazil; S. Oliveira, Environmental Resources Management (ERM) Brazil
- **Post-mining management in a major French mining area – example of the Lorraine iron ore basin I.** Vuidart, French Geological Survey - BRGM, France; R. Hadadou, GEODERIS, France; P. Hanocq, DREAL Lorraine, France; L. Semmelbeck, French Geological Survey - BRGM, France
- **From potash mining to post-mining management: remediation of Alsace groundwater** S. Corbel, French Geological Survey - BRGM, France; R. Fischer, French Geological Survey - BRGM, France; J. Roman, MDPA Liquidation, France; G. Wolf, DREAL Alsace, France
- **Banking of data from monitoring of former mine sites in France** J. Langlois, French Geological Survey - BRGM/DRP/DPSM, France; T. Souadi, French Geological Survey - BRGM/DRP/DPSM, France; A. Pauly, French Geological Survey - BRGM/DRP/DPSM, France; V. Froliger, French Geological Survey - BRGM/DRP/DPSM, France
- **Instrumentation of waste rock dumps as part of integrated closure monitoring and assessment** S. Pearce, O'Kane Consultants, Australia; M. Bartheaux, O'Kane Consultants, Australia
- **Early closure of Potentially Acid Forming (PAF) waste rock dumps – cost and risk benefits** C. Saunders, Coffey Mining, Australia

## DESIGN AND MONITORING OF STABILITY

- **Waste landform design: applied erosion prediction and validation** A. Kemp, O'Kane Consultants, Australia; I.R. Taylor, O'Kane Consultants, Australia; B. Dobchuk, O'Kane Consultants, Canada
- **Evaluating the effectiveness of surface erosion control products using erosion prediction models** K. Ayuba, Kaduna Polytechnic, Nigeria; R.J. Rickson, Cranfield University, UK
- **Long term stability of tailings dams – A Swedish example** A. Bjelkevik, Tailings Consultants Scandinavia AB, Sweden; A. Forsgren, Business Development, Bolden Mineral AB, Sweden
- **Modelling soil covers for arable and rangeland in support of closure planning at Mpumalanga Highveld** A.J. van Zyl, TerraSim, South Africa; P. Barnard, Golder Associates Africa, South Africa
- **Applying a geomorphic approach in mine planning** R. Frenette, Shell Canada Limited, Canada; K. Williams, CH2M HILL, USA; V. Wilson, CH2M HILL Canada Limited, Canada
- **Integrated geo-environmental landform assessment and design concepts – a case study** A. Kemp, O'Kane Consultants, Australia; I. Taylor, O'Kane Consultants, Australia
- **Optimising cover system specifications: using integrated numerical modelling to provide quantitative answers** K. Albano, O'Kane Consultants, Australia; A. Kemp, O'Kane Consultants, Australia; M. O'Kane, O'Kane Consultants, Australia; S. Pearce, O'Kane Consultants, Australia
- **Closure options for oil sands fluid fine tailings ponds** G.W. Wilson, University of Alberta, Canada; L.K. Kabwe, University of Alberta, Canada; J.D. Scott, University of Alberta, Canada
- **Reducing closure costs and risks: a cost-benefit analysis of mining and rehabilitation methods** A. Churr, Environmental Resources Management (ERM) UK; C. McNulty, Environmental Resources Management (ERM) UK; S. Posnik, Environmental Resources Management (ERM) South Africa

## DESIGN AND MONITORING OF DUST

- **Quantifying and modelling wind-blown dust emissions from gold mine tailings storage facilities** H. Liebenberg-Enslin, University of Johannesburg, South Africa; H.J. Anegarn, University of Johannesburg, South Africa / Cape Peninsula University of Technology, South Africa
- **Technology changes in reprocessing of gold tailings on the Witwatersrand: Health implications of aeolian dust emissions** M.E. Ojelede, Digby Wells Environmental, South Africa; W. Ngara, Digby Wells Environmental, South Africa; H.J. Anegarn, University of Johannesburg / Cape Peninsula University of Technology, Cape Town, South Africa
- **Dust risk assessment and management plan for a South African mine heading towards closure** A. Haagner, Agreenco Environmental Projects (PTY) Ltd, South Africa; I. Jansen van Rensburg, Agreenco Environmental Projects (PTY) Ltd, South Africa; G. Champion, Agreenco Environmental Projects (PTY) Ltd, South Africa

## VEGETATION USE AND MONITORING

- **The unexplored potential of sulphur-accumulating plants for mine site phytoremediation** T. Robson, CSIRO Earth Science and Resource Engineering, Australian Resources Research Centre, Australia; N. Reid, CSIRO Earth Science and Resource Engineering, Australian Resources Research Centre, Australia; J. Stevens, Biodiversity and Conservation Centre, King's Park and Botanic Garden, Australia; K. Dixon, Biodiversity and Conservation Centre, King's Park and Botanic Garden, Australia
- **Development of a new green technology for the revegetation of abandoned gold mine tailings using specific symbiotic microorganisms associated with Picea glauca** M.B. Nadeau, Université Laval, Québec, Canada; A. Azalez, Université Laval, Québec, Canada; S. Roy, University of Sherbrooke, Canada; C. Greer, Canada National Research Council, Biotechnology Research Institute, Canada; D.P. Khasa, Canada National Research Council, Biotechnology Research Institute, Canada
- **Floristic diversity and ecological characteristics of spontaneous vegetation in gravel of southwest**



## LANDSCAPE HYDROLOGY - MONITORING AND MODELLING

- **Modelling of uranium contaminated water in a flooded mine** *N. Rapantova, VSB-Technical University of Ostrava, Czech Republic; J. Sembera, Technical University of Liberec, Czech Republic; P. Štrof, DHI a.s., Czech Republic; J. Zeman, Masaryk University of Brno, Czech Republic*
- **Modelling the distributed, time varying water balance at a complex coal mine** *D.N. Graham, DHI, Denmark; E. Mårtensson, DHI, Sweden; B. Eady, DHI, South Africa*
- **Predicting post closure seepage volumes for rehabilitation options for a gold tailings facility** *A.J. van Zyl, TerraSim, South Africa; G. van Dyk, AngloGold Ashanti Limited, South Africa; P. Labuschagne, GCS, South Africa*
- **MIKE SHE™ modelling to examine the effectiveness of trees in reducing contaminated drainage from a gold tailings dam** *S.F. Grindley, University of the Witwatersrand, Johannesburg, South Africa; P.J. Dye, University of the Witwatersrand, Johannesburg, South Africa; C.J. Curtis, University of the Witwatersrand, Johannesburg, South Africa; I.M. Weiersbye, University of the Witwatersrand, Johannesburg, South Africa*

## NEW LANDSCAPES: METAL ENRICHMENT

- **Mercury pollution and speciation in historical gold mining areas: case studies in the Witwatersrand Basin** *J.G. Lusitao-Makiese, University of the Witwatersrand, Johannesburg, South Africa; E.M. Cukrowska, University of the Witwatersrand, Johannesburg, South Africa; H. Tutu, University of the Witwatersrand, Johannesburg, South Africa; L. Chimuka, University of the Witwatersrand, Johannesburg, South Africa; I.M. Weiersbye, University of the Witwatersrand, Johannesburg, South Africa*
- **Small mammals as indicators of mercury bio-accumulation in a gold mining region of South Africa** *C.H. Davies, University of the Witwatersrand, Johannesburg, South Africa; D.C. Drake, University of the Witwatersrand, Johannesburg, South Africa; M. Keith, Center for Wildlife Management, University of Pretoria; University of the Witwatersrand, Johannesburg, South Africa*
- **Invisible hazards - a review of potential risks to human health through consumption of leafy vegetables in a historic mining region** *J. Botha, University of the Witwatersrand, Johannesburg, South Africa; I.M. Weiersbye, University of the Witwatersrand, Johannesburg, South Africa*
- **Characterization and decontamination of metallurgical waste and soil in a town impacted by a former lead smelter's environmental liabilities** *J.A. Vidalón, CESEL S.A., Peru*
- **Impact of tin mining on the biota of Bangka Island, Indonesia - a proof to convince the tin supply chain of smartphones companies** *E. Nurtjahya, Universitas Bangka Belitung, Indonesia; U. Umroh, Universitas Bangka Belitung, Indonesia; F. Agustina, Universitas Bangka Belitung, Indonesia*
- **Heavy metal assessment in soils of North-East Lubumbashi (Katanga Province), Democratic Republic of Congo** *B.B. Muhaya, University of Lubumbashi, Democratic Republic of Congo; A. Bukas, University of Lubumbashi, Democratic Republic of Congo; F.T. Lubala, University of Lubumbashi, Democratic Republic of Congo; P.K. Kaseti, University of Lubumbashi, Democratic Republic of Congo; J.B. Mugisho, University of Lubumbashi, Democratic Republic of Congo*
- **Management of mineral and metallurgical tailings of the Congolese Copperbelt: Environmental stakes and perspectives** *A. Kaniki Tshamala, Department of Industrial Chemistry, University of Lubumbashi, Democratic Republic of Congo*

<http://www.mineclosure2014.com/proceedings.html>

# Impact of tin mining on the biota of Bangka Island, Indonesia – a proof to convince the tin supply chain of smartphones companies

E. Nurtjahya , Universitas Bangka Belitung, Indonesia

U. Umroh, Universitas Bangka Belitung, Indonesia

F. Agustina, Universitas Bangka Belitung, Indonesia

## Abstract

*Tin mining in Bangka Belitung islands has been exploited for about hundred years old. The islands are the largest tin producing islands in the world, second after China. Tin was exploited by the local people long time before the monopoly of VOC – a Dutch trading company in 18<sup>th</sup> century. From the occupation until the independence era, the local people had not been involved in mining. In 1999 the Department of Trade and Industry changed the tin trading status so that tin is not an export item to be watched over and regulated. This was followed by the issuance of the Bangka regent decree to legalize mining for people. That was a false perception, however believed by local government and people. While the excitement of freely mining is difficult to stop, the law enforcement proved to be weak. On one hand tin mining activities increase the wealth of the people, on the other hand they change and decrease the environmental stability. Unconventional miners (tambang inkonvensional – TI), the term used to describe local small scale tin mines, have expanded significantly since 2000. Unfortunately most of the TI activities are being carried out without regard to good mining practices, safety of land reclamation. In the last two years, local, national and international environmental non-government organizations (NGOs) have increased their campaign against exported tin ingot produced by non-standard practices. A foreign investigation found that it is highly likely that a smartphone has illegal Bangkanese tin in it. Huge foreign coverage in the media has given trouble to some smartphones companies, and local private miners and smelter owners. At the end of 2013, an international seminar to facilitate discussion on that issue was held in Pangkalpinang, Bangka Island. It was attended by some overseas smartphones representatives, local and international consultants, local and international environmental NGOs, local government, local private miners and smelter owners, and academics. Pluses and minuses of tin mining activities mostly by TI miners with regard to socioeconomic aspects, including the destruction of infrastructure, seem no objection in the reports, but the biological aspects do have substance. As a proof to convince tin supply chain to smartphone companies, this paper presents some evidence on the negative impact of non-standard tin mining operations to land and off-shore biotas. The decrease of biodiversity on the land system, in land and off-shore water bodies, and some oceanic biotas is discussed.*

## 1 Introduction

### 1.1 Tin as strategic commodity and conflict

Tin has been exploited by the local people long time before the monopoly of VOC – Dutch trading company in 18<sup>th</sup> century via the Sultan of Palembang, South Sumatera. The islands are the largest tin producing islands in the world, second after China. Indonesia produced approximately 106,000 tonnes in the year to August 2013, representing more than one third of global tin supply (IDH, 2014). The figure is higher than in 2010, 60,000 metric tons or 23% of world demand of tin in 2010 (USGS, 2011) or down from 40% at 2005 (Astira, 2005). The majority is exported to Singapore (58% by value), Malaysia (13%), Japan (7%), and the Netherlands (6%). Tin mining is the most significant activity in Bangka-Belitung, and has been exploited for decades. Mining takes place onshore and offshore, including in protected forests and marine ecosystems.

There are between 15,000 and 50,000 unconventional tin miners and approximately 30 independent smelters (IDH, 2014).

Increasing demand of tin in the world and the high quality of tin caused Bangka tin was in good trading. In 1847, 83% Bangka tin entered Amsterdam market, and became 25% supply for Europe demand. Tin Reglement in 1819 by the Dutch colonialism was to monopoly tin in Bangka. Tin price was low during recession in 1930 and Japanese occupation in 1942-1945, and has steadily increased since 1970 (Zulkarnain et al., 2005). As a strategic or group “A” commodity and under central law PP No. 27 tahun 1980, only PT Timah, a publicly listed company, has the right to mine and market. The decrease of rubber and pepper price, while the price of tin was increasing, and no alternative business, the intensity of violation by locals was increasing. Unequal benefit distribution between Jakarta and Palembang gave rise to protests since independence. It is among other reasons the Bangka Belitung province separated from South Sumatera.

During British and Dutch occupation, forest concession for tin mining was managed by immigrant Chinese of Banka Tin Winning (BTW) who also cultivated pepper since the beginning of 20<sup>th</sup> century. Local was not involved as the lazy stereotype and they disagreed with the contract system (Zulkarnain et al., 2005). Local people were not being involved in mining, while massive recruitment from Chinese mainland was reported. From the occupation until the independence era, the local people had not been involved in mining. In 1999 the Department of Trade and Industry in its decree No. 146/MPP/Kep/4/Tahun 1999 changed the tin trading status that tin was not an exporting item to be watched over and regulated. That was a false perception done by local government and local people. The excitement of freely mining is difficult to be stopped. The law enforcement proved to be weak. On one hand tin mining activities increase the wealth of the people, on the other hand they change and decrease the environmental stability. The Bangka regent decree SK Bupati Bangka No. 6 in 2001 gave room for locals to mine. Tin mining has become a dominant economic driver in the province leaving rubber and pepper (Zulkarnain et al., 2005).

Conflict among stakeholders, between company and community, among unconventional miners, and between local and immigrant took place during 2005 – 2013. A significant damage is the illegal mining on revegetated area which up to 5,000 ha, caused reclamation moratorium during 2000 – 2005. Community empowerment in reclamation project proved to be failed. Two hectare experiment plot belongs to the author was illegally re-mined and damaged by local in the sixth year. All facilities were stolen. Another big project called eco-park in ex tin mining area belongs to the tin company seems to be stopped due to unresolved local claims.

The casualties are increasing but little effort to minimize (Table 1). The standard operating procedure is neglected in small scale mining or illegal mining. Most of accident in inland mine sites is due to landslide, while non-standard diving device is responsible for most death besides landslide under water. A national environmental watch NGO, Walhi is concerned on abandoned mined sites as malaria habitat, and radioactivity. Gamma radioactivity in Bangka Belitung islands is three times higher than any gamma radiation rate in the world (Walhi – Friends of the Earth Indonesia, 2013). Until recently, radiation of technologically enhanced naturally occurring radioactive material (TENORM) has not drawn attention from all stakeholders.

**Table 1 Casualties of tin mining operation in Bangka Belitung province from 2011 – 2013**

2011	2012	2013
32	80	22

Notes: from various sources

## 1.2 Impact of reformation

Unconventional miners (tambang inkonvensional – TI), the term used to describe local small scale tin mines, have expanded significantly during 2000 to 2010 (Figure 1). It was estimated more than 10,000 unconventional miners, supporting more than 50,000 people (ITRI, 2012). In 2013 it was reported that

there are 80 dredges and 3,600 floating tin miners in Bangka offshore (Bangka Pos, 2013). Tin production from artisanal and small scale mines contribute up to 80% of Indonesia tin export (ITRI, 2013). Unfortunately most of the TI activities are being carried out without regard to good mining practices, safety of land reclamation. After 15 years intensive mining, the availability of reserves of tin drives the unconventional miners to dig deeper, or to work in more off-shore waters, increasing the risks.



**Figure 1** Inland mined sites and unconventional mine (TI) boats in the beach and on operation (Nurtjahya et al. 2008 and primary photographs)

The positive impact of tin mining is shown on wealth. The majority of Bangka Belitung people live at wealthy family category 2 and 3, and only 1,184 people in the pre-wealthy category in 2011 is due to government initiatives and TI income and its multi-plyer effect. This is proven by the number of people own motorcycle and cars, and the increase of people who perform hajj pilgrimage. Bangka and Belitung islands are among the five most expensive provinces in Indonesia (Erman, 2013). The negative impact is this province Dampak is the second biggest drop out students in Indonesia in 2011 due to children involvement in mining and follow their parents who move to other mine sites (Erman, 2013).

Many people continue to practice traditional and subsistence land-based activities. As a result, ecological disruption caused by mining continues and neglected because of the economic benefit. Community empowerment in reclamation is suggested as third party scheme reclamation often faces social difficulties. Lack of trust to the company, mindset, and low law enforcement play contribute to unsuccessfulness. Benefits promises for people have not frequently come true, adding a lack of trust. Poor communications has further increased the lack of trust in many cases.

Excluding land function change from pepper plantation, revenue from tin from land function change value are lower than non-mining activities. Land recovery and coral reef transplantation are costly. Except for pepper plantation which is 10.8 years, the tin revenue from land function change from protected forest, rubber plantation, and beach and its offshore ecosystem into tin mining is below 3 years (Table 2).

**Table 2 Land function change value**

No.	Description	Land function value (USD) / Ha / month			
		Protected forest	Pepper plantation	Rubber plantation	Beach
1	Revenue from tin	2,116	7,653	468	8,100
2	Revenue from plantation, fishing, and environmental service	48	59	12	6,278
3	Land recovery, coral reef transplantation in 25 years	4,099	4,099	4,099	13,000
4	Balance to non-mining (1-(2+3))	-2,031	3,494	-3,643	-11,178
5	Equality in years (1/(2*12))	3.6	10.8	3.2	0.1

### 1.3 International concern on good mining practice

Tin mining leaves disturbed land, ex-tin mining ponds, damages natural drainage and habitats, and causes pollution. Sand tin tailings may have 95% sand, C-organics less than 2%, cation exchange capacity less than 1.0, its soil temperature may reach 45°C (Nurtjahya et al., 2008), and phosphate solubilising bacteria and arbuscular mycorrhizal fungi readings were reported low (Nurtjahya et al., 2009). Evaporation on tin mined land is almost double than it on undisturbed land (Nurtjahya et al., 2011). Tin-mined lands are considered useless lands and take a long time to recover. Sand tin tailings need amendment before planting (Nurtjahya et al., 2009).

Together with other marginal lands, the total of mine-impacted lands in the province totals 1,642 ha (Metro Bangka Belitung, 2008), or even more than 5,000 ha if those which have been already reclaimed and revegetated are included (Nurtjahya et al., 2008). Land use has changed from pepper and rubber plantation to mining (Nurtjahya et al., 2009), and in the coastal area a change of profession from fishermen to miners has been reported. Studies show that some efforts to restore previously tin-mined lands face significant challenges. Reliance on natural succession to restore sand tin tailings without any human intervention will take a long time before an effective cover is established (Mitchell, 1959; Ang, 1994; Nurtjahya et al., 2009).

In the last two years, local, national and international environmental non-government organizations (NGOs) have increased their campaign against exported tin ingot produced by non-standard practices. A foreign investigation found that it is highly likely that a smartphone has illegal Bangkanese tin in it (Hodal, 2012). Illegal tin either comes from the negligence of environmentally friendly mining process, or export process which does not follow the regulations (Bangka Pos 2014).

Huge foreign coverage in the media has given trouble to some smartphones companies, and local private miners and smelter owners. At the end of 2013, the IDH Indonesian Tin Working Group (TWG) facilitated discussion on that issue was held in Pangkalpinang, Bangka Island. It was attended by some overseas smartphones representatives, local and international consultants, local and international environmental NGOs, local government, local private miners and smelter owners, and academics. TWG is to explore if and how its members can positively contribute to addressing the sustainability challenges of tin mining in Bangka and Belitung province while also recognizing the economic benefits of the sector and poverty reduction (IDH 2014).

TWG identified that many of the sustainability issues are derived from the local and national operating environment and are not directly intrinsic to the business and practices of mineral exploitation and trade, which is where the efforts of the TWG can be focused. As a complex governance issue, it requires action from all stakeholders, including governmental agencies, development agencies, NGOs and industry. The IDH Indonesian Tin Working Group intends to reach out to local stakeholders in order to understand their priorities and opinions on desirable pathways towards a more sustainable tin sector. Possible scenarios to be explored may be strengthening the economy through rehabilitation of land, research into low-impact

techniques for offshore mining, or strategies for enhancing risk management at mine sites (IDH 2013).

Pluses and minuses of tin mining activities mostly by TI miners with regard to socioeconomic aspects, including the destruction of infrastructure, seem no objection in the reports, but the biological aspects do have substance. As a proof to convince tin supply chain to smartphone companies, this paper presents some evidence on the negative impact of non-standard tin mining operations to land and off-shore biotas. The decrease of biodiversity on the land system, in land and offshore water bodies, and some oceanic biotas is discussed.

## 2 Methodology

### 2.1 Site description

Bangka island with the area of 1.16 million hectare (PPTA, 1996) is located off the eastern coast of South Sumatera island with its population of 991,062 people (BPS, 2012). The climate of the area is hot and wet, belongs to Af type (PT Timah Tbk., 1997). Average temperature is 26.3 °C with its average humidity and rainfall are 61.7%, and 241.4 mm per month respectively, with July to September are the lowest precipitation months of the year (BPS, 2012). The landscape is flat with average of 50 m and some hills with their highest elevation of 700 metres.

The inland site is a pepper plantation in Silip village (01° 42' 48.1"S; 105° 52' 26.7"E); a rubber plantation in Bencah village (02° 44' 25.0"S; 106° 25' 27.6"E); and a protected forest in Lubuk Kelik hamlet (01° 54' 09.4"S; 106° 05' 46.9"E). The beach site is Pantai Bubus beach in Belinyu district (01° 31' 36.8"S; 105° 46' 27.8"E), and Pantai Rebo beach in Sungailiat district (01° 55' 57.4"S; 106° 12' 58.6"E). The offshore sites for seagrass and molusks is Tanah Merah beach, Central Bangka (02°14'37,2"S, 106°12'57,6"E; 02°14'40,6"S, 106°13'5,4"E; 02°14'35,6"S, 106°12'59,6"E), and Tukak beach, South Bangka (03° 0' 17.3"S, 106 °42'6,2"E; 02° 58' 22,6"S, 106°40' 38,12"E; 02° 58'33,1"S, 106°38'59,8"E). The other 18 study sites were secondary data and enrich the discussion (Figure 2). Water quality analysis and specimen identification were conducted at Fishery Laboratory, Universitas Bangka Belitung.

### 2.2 Sampling

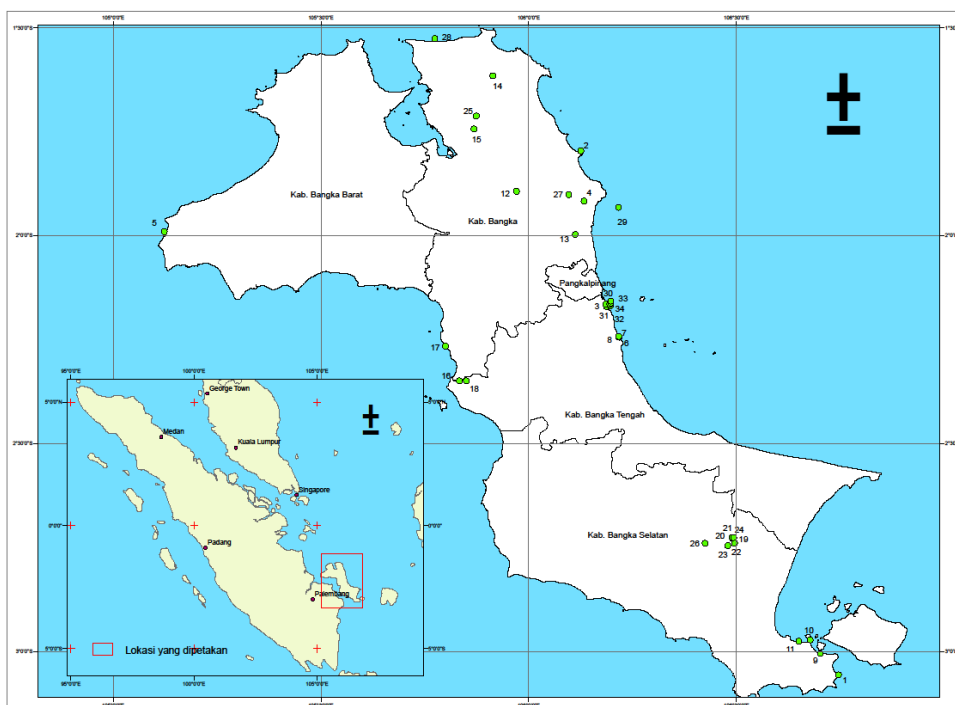
The case studies have been developed through a literature review using academic, corporate, and community sources, and interview. Primary data collection is gathered through interview to owners, workers of small scale miners, pepper farmers and rubber farmers of selected respondents (*purposive sampling*).

#### 2.2.1 Social

The number of interviewee in inland ecosystem is 26 persons of 20 – 60 years old, while 25 persons of 25 – 45 years old in beach sites. Some of respondents in Pantai Rebo beach were local fishermen which changed their profession to floating tin miners, and Javanese immigrants. Tin miners in Pantai Bubus beach are from more diverse part of Sumatera and Java islands.

#### 2.2.2 Water quality

Sampling method for water quality uses a purposive sampling (Fachrul, 2007) and quadrat transect. Each station has three sub-stations with 20 m distance between sub-stations, and at each sub-station sampling was carried out in 3 quadrat transects with 10 m distance between sub-stations. The total number of quadrat transects in three stations was 27 plots. Clarity, current velocity, and total suspended solid (TSS) were calculated with relevant formulas (Hutagalung *et al.*, 1997). Sedimentation rate was measured according to Pastorok and Bilyard (1985).



**Figure 2** In land and offshore study sites in Bangka Island from primary and secondary data

### 2.2.3 Biotas

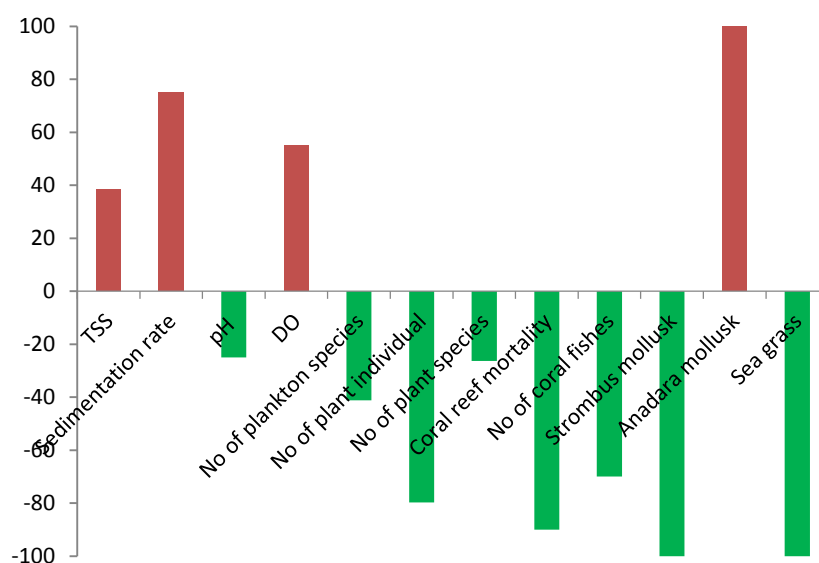
Molusks and seagrass sampling were carried out in 1 x 1 m quadrat transects during low tide. Specimen were then identified in the fishery laboratory of Universitas Bangka Belitung.

A minimum study plot 0.2 hectare per study site was determined by species-area curve (Setiadi & Muhadiono, 2001). The study was conducted on 20 contiguous plots of 10 m x 10 m at each of study sites using a modified quadrat sampling technique by Oosting 1956 (Soerianegara & Indrawan, 1995). Quadrats of 10 m x 10 m used for measuring trees that had greater than 20 cm dbh, and for poles with diameter between 10–20 cm; 5 m x 5 m for saplings with height taller than 1.5 m and diameter less than 10 cm; and 1 m x 1 m quadrats for seedlings with height less than 1.5 m. The number of individual plants for each species and diameter of stem of trees and poles were recorded, and only the number of each species of saplings and seedlings was recorded.

## 3 Results and Discussions

### 3.1 Water quality and off shore biotas

Offshore tin mining reduced water quality. TSS increased 40%, sedimentation rate 75%. Sea water pH decreased one quarter, while dissolved oxygen (DO) increased 50% (Figure 3). Other study in Tanjung Ular beach in West Bangka by Amini (2009 in Bidayani, 2010) showed the mining decreased water quality: water temperature changed from 23-25°C to 30-30.5°C; salinity from 32-35 ppt became 25-30 ppt, and the water body depth from 25 m to 5-20 m; the decrease of water clarity and current velocity. Pb content and TSS in water at Batu Belubang beach due to tin mining are above the standard according to the ministerial regulation Kepmen No. 51/MENLH/2004 i.e. <0.0001 – 0.09260 ppm, while Cd, Zn in the water, and Pb in sediment were in the normal range (Wahyuni et al. 2013).



**Figure 3 Increase and decrease percentage of water quality and offshore biotas**

TSS gives broad effects in ecosystem i.e. reduction of light penetration so that reduced photosynthesis processes in phytoplankton and water plant. This condition reduced oxygen supply to the water body (Mukhtasor 2007). TSS at Batu Belubang beach due to tin mining was 705.4 ppm, which above the standard for sea biotas at 400 ppm (Wahyuni et al., 2013). Tailing disposal either above sea water or under sea water by small and big dredgers increased TSS. The spread of tailings disposal and the extent of marine impact is determined by weather and dredge type and the spread of total suspended solids was reported to reach 5000 square kilometres in windy season (IDH, 2014). pH at Batu Belubang beach in floating TI mining site was still normal 6.5 – 8.1 (Wahyuni et al., 2013). Water temperature increase tended to increase pH (Wahyuni et al., 2013).

**Table 3 Sea water quality and seagrass and molluscs**

		Tanah Merah Beach (mined water)	Tukak Beach (less mined water)
Sea Water Quality	Temperature (°C)	29.7	31.3
	Clarity (%)	36.7	83.3
	TSS (mg/l)	32.9	20.3
	Sedimentation rate (g/cm <sup>2</sup> /day)	135.5	34.0
	Salinity (‰)	32.2	29.0
	pH	6.0	8.0
	DO	2.5	5.5
Seagrass and Molluscs density (ind. m <sup>-2</sup> )	<i>Cymodocea rotundata</i>	0	75.7
	<i>Cymodocea serrulata</i>	0	15.7
	<i>Thalassia hemprichii</i>	0	24.7
	<i>Enhalus acoroides</i>	0	18.7
	<i>Halodule uninervis</i>	0	61.0
	<i>Laevistrombus canarium</i>	-	+
	<i>Anadara granosa</i>	+	-



**Table 4 Plankton, Vegetation, Coral Reef (Nurtjahya et al. 2008)**

		<b>Bubus Beach (mined water)</b>	<b>Rebo beach (less mined water)</b>
Plankton	<i>Phormidium</i> sp.	388	442
	<i>Gloeotrichia echinulata</i>	0	127
	Anonim sp.7	0	87
	<i>Oscillatoria putrida</i>	33	74
	Anonim sp.4	0	74
	Anonim sp.2	0	60
	<i>Skujaella thibauti</i>	0	47
	<i>Rivularia</i> sp.	0	40
	Anonim sp.6	0	33
	Anonim sp.1	0	27
	<i>Lemmoniera aquatica</i>	7	20
	<i>Ophiocytium</i> sp.	7	20
	<i>Spirocta</i> sp.	13	13
	Anonim sp.3	0	13
	Anonim sp.5	0	13
	<i>Mallomonas pyroformis</i>	47	7
	Anonim sp.8	0	7
	<i>Oscillatoria</i> sp.	94	0
	<i>Rivularia mammilata</i>	7	0
	<i>Tabellaria fenestrata</i>	47	0
	<i>Skujaella</i> sp.	74	0
Plankton Indeces	Diversity index	0.67	0.94
	Evenness index	0.67	0.76
	Domination index	0.33	0.20
	Number of species	10	17
	Abundance (ind./l)	7,000 – 380,000	7,000 – 440,000
Vegetation	Number of individual	26	128
	Number of species	14	19
	Number of families	11	14
Coral reef	Life coverage (%)	<25.0	91.6
	Mortality index (%)	>>	7.6
	Type of dominant substrate	sand and rubble	macroalga <i>Halimeda</i> sp., anemone
	Number of fishes	3	10

Offshore mining caused the 40% reduction of the number plankton species (Table 4). Tin mining was reported responsible for the damage of coral reef up to 90%, and the reduction of coral reef associated fishes. Walhi reported there are 30 mining sites in Bangka Belitung water and the use of bomb to catch fish caused 50% coral reef (Walhi 2013). The chief of Emas Diving Club (EDC) Bangka Belitung, Mr. Sakinawa mentioned that in the past fishermen caught fish in 1 - 3 miles from the beach, and because of coral reef damage made them to catch fishes above 10 miles (Tribun News 2013).

Study at coral reef community which was effected by floating TI in Tanjung Kerasak beach, South Bangka, the percentage of coral cover was 21.2% with its index mortality 39 – 86% (Sumarman, 2011). However,

coral reef transplantation in Teluk Limau beach, Sungailiat shows growth rate of *Acropora digitata* in 1 m dan 3 m was 2.2 mm/month and 2.24 mm / bulan respectively (Sodikin, 2011).

In Tukak water some seagrass were identified such as *Cymodocea rotundata*, *Cymodocea serrulata*, *Thalassia hemprichii*, *Enhalus acoroides* and *Halodule uninervis*. In Tanah Merah water, seagrass was not found, the majority was dead or dying.

Benthic mollusks *Laevistrombus canarium* L. (siput gonggong) of family Strombidae were replaced by *Anadara granosa*. The dead seagrass, which is good habitat for *L. canarium* effected the mollusks population. Siput gonggong eat detritus besides seagrass. The offshore mining and excessively exploitation threatened mollusks population (Yulianda, 2009). Sea bed changed from macroalga with *Halimeda* sp., and anemone to sand and rubble. Siput gonggong observation in Teluk Klabat, Bangka and Lepar Pongok islands, showed the effect of floating TI towards siput gonggong population (Dody 2011). Substrate which was always labil due to offshore tin mining causes the reduction of nutriets in the surface stirred or covered by tailing, and siput gonggong covered by sediment made siput gonggong difficult to find food and enough oxygen. This condition may ends up to the death of siput gonggong (Dody, 2011; Dody & Marasabessy, 2007). As filter feeder, *A. granosa* can live in silty sediment, not depended on sea grass litter, and can live in the extreme condition with food. *A. granosa* can live in sediment, even consumes sediment and can absorb heavy metal (Debenay, 1994).

### 3.2 Inland biotas

Inland mining changed soil fertility. There are differences of soil fertility in forest, abandoned farmed-land, and abandoned mined sites at 0, 7, 11, and 38 years (Table 5). Inland mining caused the decrease of the number of individual plant up to 80% and the species up to 26%. From studies in several locations in Bangka island, mining activity changes the vegetation structure and composition. The vegetation structure of 38-year old tin-mined land was less than 2% similar to the vegetation structure of a riparian forest. It can be predicted that the appearance of poles and then trees in natural regeneration of tin-mined land may need much longer time (Nurtjahya et al. 2009).

**Table 5 Soil properties of riparian forest, abandoned farmed-land, 38-year old tin-mined land, 11-year old tin-mined land, 7-year old tin-mined land, and 0-year barren tin-mined land**

Study sites	Depth cm	Texture			pH H <sub>2</sub> O	Soil organic matter			HCl 25%		Cation-exchange							KCl 1 N Al <sup>3+</sup> cmol(+)/kg	
		Sand	Silt	Clay		Walkley &Black C	Kjeldahl N	C/ N	P <sub>2</sub> O <sub>5</sub> mg/100g	K <sub>2</sub> O mg/100g	(NH <sub>4</sub> -Acetate 1 N, pH 7)								
											Ca	Mg	K	Na	Tot al	CEC	B %		Al <sup>3+</sup> cmol(+)/kg
Forest	0-20	78	13	10	4.7	1.6	0.2	10	22	5	0.2	0.1	0.1	0.1	0.4	5.8	7	2.0	
	20-40	66	18	16	4.7	1.2	0.1	14	20	5	0.1	0.1	0.1	0.1	0.4	5.2	7	2.0	
Abandoned farmed-land	0-20	47	22	31	4.5	3.2	0.3	12	35	8	0.3	0.2	0.1	0.0	0.7	14.7	4	4.8	
	20-40	48	22	31	4.6	1.7	0.1	12	36	7	0.3	0.2	0.1	0.1	0.6	9.6	6	3.7	
Tin-mined land 38 yrs	0-20	96	2	2	5.1	0.3	0.0	14	5	2	0.2	0.1	0.0	0.1	0.4	1.0	40	0.2	
	20-40	95	2	3	5.0	0.2	0.0	10	4	2	0.1	0.1	0.0	0.1	0.3	0.9	31	0.2	
Tin-mined land 11 yrs	0-20	83	5	13	4.9	0.2	0.0	10	11	4	0.2	0.1	0.0	0.0	0.3	2.0	28	0.9	
	20-40	80	3	18	4.8	0.3	0.0	10	11	4	0.2	0.1	0.0	0.0	0.4	2.3	30	0.9	
Tin-mined land 7 yrs	0-20	94	4	3	4.8	1.0	0.1	13	49	3	0.2	0.1	0.0	0.1	0.3	3.3	16	0.6	
	20-40	93	6	2	4.8	1.2	0.1	14	71	3	0.2	0.1	0.0	0.1	0.4	3.9	19	0.7	
Barren tin-mined land	0-20	94	2	4	4.8	0.2	0.0	15	2	3	0.1	0.2	0.0	0.0	0.3	0.4	73	0.3	
	20-40	97	1	2	4.5	0.1	0.0	13	3	3	0.3	0.2	0.0	0.0	0.6	1.4	40	0.1	

Source: Nurtjahya et al. (2009)

**Table 6** Number of individuals, species, and families in forest, abandoned farmed-land, 38-year old tin-mined land, 11-year old tin-mined land, 7-year old tin-mined land, and 0-year old barren tin-mined land

Study site	Number of individuals / ha					Number of species					Number of families				
	seed lings	sap lings	poles	trees	total	seed lings	sap lings	poles	trees	total	seed lings	sap lings	poles	trees	total
Forest	2,665	4,155	305	170	7,295	42	66	24	11	85	24	30	14	8	44
Abandoned farmed-land	1,640	5,495	40	0	7,175	48	47	4	0	71	27	25	4	0	38
Tin-mined land 38 yrs	2,125	55	0	0	2,180	15	1	0	0	16	12	1	0	0	13
Tin-mined land 11 yrs	1,675	45	0	0	1,720	7	2	0	0	8	4	2	0	0	5
Tin-mined land 7 yrs	890	0	0	0	890	6	0	0	0	6	4	0	0	0	4
Barren tin-mined land 0 yrs	0	0	0	0	0	0	0	0	0	0	0	0	0	0	0

Source: Nurtjahya et al. (2009)

### 3.3 Social economy

Offshore mining by any dredge type reduced fish catch. Although it has not been studied scientifically, at some places caught fish was reported smaller. The increase of coral reef mortality index due to water quality decrease was suggested to influence the fish catch by fishermen.

Floating TI in Batu Belubang beach, Central Bangka caused the small pelagic caught decreased 58.44% or 2,503.4 MT in 2010 compared with 4,282.7 MT in 2009. The use of small pelagic fishes has not been overfishing overfishing biologically or economically as effort actual 214 units and actual production 3,435.8 still under maximum sustainable yield (MSY) and maximum economy yield (MEY) i.e. 245 units dan production at 3,959.2 MT. Floating TI caused catch device productivity in 2010 decreased 26.2% or 6.4 MT/unit compared to year 2007 i.e. 24.3 MT/unit (Octarini, 2011). TI mining at Rebo beach, Bangka caused the decrease of fish catch 13.8% from 2007 to 2010 for small pelagic and 55.8% for demersal fishes (Sucita, 2011). Floating TI in Tanjung Ular beach, West Bangka caused the reduction of small pelagic catch 24% from 1998 to 2008, and the decrease of demersal fishes 70% at the same period of time (Bidayani 2010) (Table 7).

**Table 7** Small pelagic and demersal fishes production in offshore mined sites

Site	Regency	T0 - T1 Period	T 0 (MT)		T 1 (MT)		Diff. (%)	References
			Small pelagic	Demersal	Small pelagic	Demersal		
Batu Belubang Beach	Central Bangka	2009 - 2010	4,282.9		2,503.4		-58.4	Octarini 2011
Rebo Beach	Bangka	2007 - 2010	3,531.2	448.1	3,184.1	233.5	-9.8%; -47.9%	Sucita 2011
Tanjung Ular Beach	West Bangka	1998 - 2008	4,538.5	4,070.1	3,476.4	1,179.6	-24%; -70%	Bidayani 2010

Siput gonggong population replacement effected fishermen. Siput gonggong is the main raw material for siput gonggong cracker which is the expensive seafood snack in Bangka Belitung, which reaches Rp.250.000,- per kg or USD 25 per kg.

The current mining can be called as big harvest at a short period of time without saving the stock for next generation, may cause horizontal conflicts due to mining site. It is reported that in several locations, tension took place between local Malay with immigrant from Sumatera, Java, and East Nusa Tenggara islands. Walhi (2013) reported 12 conflicts between local fishermen and miners in 2006 – 2011 (Walhi – Friends of the Earth Indonesia, 2013).

It has demonstrated the importance of integrated agriculture in order to solve problems of land use in mined areas. Apart from rice field cultivation on ex-mined lands, considerable effort should now be made so as to be able to repay the environmental loss and achieve real benefits from the rice fields. As they are major costs, soil amendment or land preparation procedures need to have some modifications (Nurtjahya et al., 2009).

## 4 Conclusions

Offshore mining reduced water quality as TSS increased and pH lowered. The change of sea bed caused the change of benthic flora and fauna, plankton diversity, and the increase of mortality index of coral reef and coral reef associated fishes. Fish caught in the offshore mining site decreased. Inland mining activity reduced soil fertility and flora and fauna diversity. Inland mining reduced the number of individual, species, and plant families.

Although differ from the conclusion of Tin Working Group study which identified that many of the sustainability issues are derived from the local and national operating environment and are not directly intrinsic to the business and practices of mineral exploitation and trade, the Electronic Industry Citizenship Coalition® (EICC®) and Friends of the Earth (FoE) may participate in pushing mining process and export process follow the law in order to support sustainable development in the province.

## Acknowledgement

The first author gratefully acknowledges the funding of this research by Directorate General of Higher Education, Republic of Indonesia (Hibah Bersaing, No. SP2H 092/SP2H/PP/DP2M/III/2007; and No. SP2H 086/SP2H/PP/DP2M/III/2008). The authors acknowledge Mr. A. Akbar and Ms. W.E.A. Putri for the valuable data. The authors gratefully acknowledge part of the funding of this research by Universitas Bangka Belitung. Special thanks to the reviewers for their valuable comments on the manuscript.

## References

- [BPS] Badan Pusat Statistik (2012) Bangka Belitung dalam Angka, Pangkalpinang
- [PPTA] Pusat Penelitian Tanah dan Agroklimat (1996) Laporan Akhir Penelitian Studi Upaya Rehabilitasi Lingkungan Penambangan Timah. Bogor: Pusat Penelitian Tanah dan Agroklimat, Departemen Pertanian.
- [USGS] United States Geological Surveys (2011) Tin in November 2011, Mineral Industry Surveys
- Ang LH. 1994. Problems and Prospects of Afforestation on Sand Tin Tailings in Peninsular Malaysia. *J. of Tropical Forest Science* 7(1):87-105.
- ASTIRA – Asosiasi Tambang Timah Rakyat (2005) Tambang Rakyat Potensi Terabaikan.
- Baeten, M.P. (2013) 2 Orang Pekerja TI Tewas Tertimbun Longsor, viewed 15 April 2013. <http://www.babel.polri.go.id/polres/bangka-selatan/5874.html>
- Bangka Pos (2013) Idil: arogansi bupati akan dibayar mahal. *Bangka Pos* 20 Maret 2013, viewed 19 April 2013.
- Bangka Pos (2013) Setahun, 80 nyawa melayang di lokasi tambang. <http://bangka.tribunnews.com/2013/11/20/setahun-80-nyawa-melayang-di-lokasi-tambang> (visited 27 June 2014).
- Bangka Pos (2014) Kabareskrim: jangan ekspor timah akal-akalan. <http://bangka.tribunnews.com/2014/06/04/kabareskrim-jangan-ekspor-timah-akal-akalan> (visited 5 June 2014)
- Beritanda (2013) 5 Orang Tewas Akibat Tanah Longsor di Tambang Inkonvensional. *Beritanda.com*, Senin, 11 Februari 2013, viewed 15 April 2013. <http://beritanda.com/nusantara/sumatera/bangka-belitung/11754-5-orang-tewas-akibat-tanah-longsor-di-tambang-inkonvensional.html>
- Bidayani, E. (2010) Analisis ekonomi dampak kerusakan lingkungan terhadap pendapatan nelayan di pesisir Tanjung Ular Kabupaten Bangka Barat [tesis] Bogor: Sekolah Pascasarjana Institut Pertanian Bogor, 143 pp.
- Bidayani, E. (2011) Menangani Konflik Pemanfaatan Laut, viewed 15 April 2013. [http://www.ubb.ac.id/menulengkap.php?judul=MENANGANI%20KONFLIK%20PEMANFAATAN%20LAUT&&nomorurut\\_artikel=491](http://www.ubb.ac.id/menulengkap.php?judul=MENANGANI%20KONFLIK%20PEMANFAATAN%20LAUT&&nomorurut_artikel=491)

- Debenay, J.P. and Tack, D.L. (1994) Environmental conditions, growth and production of *Anadara senilis* (Linnaeus, 1758) in a Senegal Lagoon. *Journal Mollusca Study* 60 (2): 113-121.
- Dodi, S. (2011) Pola sebaran, kondisi habitat dan pemanfaatan siput gonggong (*Strombus turturella*) di Kepulauan Bangka Belitung. *Oceanology dan Limnologi di Indonesia* 37 (2): 339-353.
- Dodi, S. and Marasabessy, M.D. (2007) Habitat dan Sebaran Spasial Siput Gonggong (*Strombus turturella*) Di Teluk Klabat, Bangka – Belitung. Di dalam: Pringgenies, D., Sudrajat., Insan, I., Hartati, R dan Widianingsih (eds). *Prosiding Seminar Nasional Moluska Dalam Penelitian, Konservasi dan Ekonomi*. Semarang 17 Juli. 2007. Pp. 100-108.
- Erman, E. (2013) Dampak penambangan timah dan respon masyarakat lokal. *ITRI Indonesia Tin Forum*, Pangkalpinang, 11 December 2013.
- Fachrul, M.F. (2007) *Metode Sampling Bioekologi*. Bumi Askara. Jakarta.
- Faturrahman, M. (2012) 5 Pekerja Tambang Tewas Tertimbun Tanah Longsor , viewed 15 April 2013. <http://groups.yahoo.com/group/BiroSunKita/message/85103>
- Hodal, K. (2012) Death metal: tin mining in Indonesia. *The Guardian* 23 November 2012. <http://www.theguardian.com/environment/2012/nov/23/tin-mining-indonesia-bangka>
- Hutagalung, H.D., Setiapermana, and Riyono, S.H. (1997) *Metode Analisis Air laut, Sedimen dan Biota*. Pusat Penelitian Pengembangan. Jakarta.
- IDH (2014) IDH Tin Working Group Communiqué - To share recent study findings and consult Indonesian stakeholders about their sustainability views and priorities for action.
- ITRI – International Tin Research Institute (2013). Indonesia's position in the global tin industry. *ITRI Indonesia Tin Forum*, Pangkalpinang, 11 December 2013.
- ITRI – International Tin Research Institute (2012). Comments form ITRI: Friends of the Earth campaign 'Make it better'
- Jaya, I. (2005) Struktur dan komposisi jenis tumbuhan pada tanah troposaprists di berbagai tipe penggunaan lahan di Pulau Bangka [skripsi] Sungailiat: STIPER Bangka, 101 p.
- Komoditas Indonesia (2012) Tahun 2012, 32 Orang Tewas Akibat Tambang Inkonvensional. *Komoditas Indonesia*, Jumat, 7 September 2012, viewed 15 April 2013. <http://komoditasindonesia.com/2012/09/tahun-2012-32-orang-tewas-akibat-tambang-inkonvensional/>
- Lamb, D. and Tomlinson, M. (1994) Forest rehabilitation in the Asia-Pasific region: past lessons and present uncertainties, *Journal of Tropical Forest Science* 7, pp. 157–170.
- Metro Bangka Belitung (2008) Edisi Khusus Bangka Goes Green, Bangka Goes Green, Pangkalpinang, Edisi Khusus.
- Mitchell, B.A. (1959) The ecology of tin mine spoil heaps. Part I sand and gravel tailings, *Malayan Forestry* 22, pp. 111–132.
- Mukhtasor (2007) *Pencemaran Pesisir dan Laut*. Pradnya Paramita. Jakarta.
- Nurjaman, U. (2013) Pekerja Tambang Inkonvensional (TI) Tertimbun Tanah, viewed 15 April 2013. <http://www.babel.polri.go.id/polres/bangka-selatan/5970.html>
- Nurjaman, U. (2013) Tertimbun Di Tambang Timah, 3 Orang Meninggal Dunia, viewed 15 April 2013. <http://www.babel.polri.go.id/polres/bangka-selatan/5542.html>
- Nurtjahya, E., Nur, M.M., and Mulyono, E. (2009) Rice field cultivation on tin-mined land in Bangka Island, Indonesia, *Proceedings of Mine Closure 2009*, A.B. Fourie, and M. Tibbett (eds), September 2009, Perth, Australia, 2009 Australian Centre for Geomechanics, Perth, ISBN 978-0-9804185-9-0, pp. 549-560.
- Nurtjahya, E., Setiadi, D., Guhardja, E., Muhadiono and Setiadi, Y. (2009) Succession on tin-mined land in Bangka Island, *Blumea* 54(1–3), pp. 131–138.
- Nurtjahya, E., Setiadi, D., Guhardja, E., Muhadiono and Setiadi, Y. (2008b) Establishment of four local tree species for potential revegetating of tin-mined land in Bangka Island, Indonesia, *Proceedings of The Third International Seminar on Mine Closure*, A. Fourie, M. Tibbett, I. Weiersbye and P. Dye (eds), October 2008, Johannesburg, South Africa, Australian Centre for Geomechanics, Perth, Australia, pp. 751–758.
- Nurtjahya, E., Setiadi, D., Guhardja, E., Muhadiono, and Setiadi, Y. (2008) Revegetation of tin-mined land using various local tree species in Bangka Island, Indonesia, *Proceedings of the 2008 National Meeting of the American Society of Mining and Reclamation New Opportunities to Apply Our Science*, R.I. Barnhisel (ed), June 2008, Lexington, USA, ASMR, pp. 739-755.
- Octarini, S. (2011) Analisis bioekonomi dampak aktivitas tambang inkonvensional (TI) apung terhadap produksi tangkapan nelayan Batu Belubang Bangka Tengah. [skripsi] Pangkalpinang: Jurusan Perikanan Universitas Bangka Belitung, 46 p.
- Pastorok, R.A. and Bilyard, G.R. (1985) Effects of sewage pollution on coral-reef communities. *Mar. Ecol. Prog. Ser.* 21: 175-189.
- PT Timah Tbk. (1997) ANDAL, RKL, dan RPL. *Kegiatan Penambangan Timah dan Pasir Laut di Perairan P. Bangka Kabupaten Bangka, Propinsi Sumatera Selatan*.
- PT. Timah (Persero) Tbk. (2011) Laporan Tahunan 2011, viewed 15 April 2013. <http://www.timah.com/v2/ina/down/1707062010160939/laporan-tahunan-2009/>[1 April 2013]
- Radar Bangka (2012) Selama 2011, 32 pekerja tambang tewas <http://www.radarbangka.co.id/berita/detail/global/4883/selama-2011-32-pekerja-tambang-tewas.html> (visited 27 Jun2 2014).
- Radar Bangka (2013) Menangani Konflik yang Konstruktif. *Radar Bangka Online*, 17 April 2013, viewed 15 April 2013. <http://www.radarbangka.co.id/rubrik/pdf/persepektif/1747>
- Radar Bangka (2013). Dinding Camoy Longsor, 3 Penambang Tewas. *Radar Bangka*, Selasa 19 Maret 2013, viewed 15 April 2013. <http://www.radarbangka.co.id/berita/detail/muntok/16866/dinding-camoy-longsor-3-penambang-tewas.html>
- Rusmiadi (2012) Suami Tewas, Istri Sebentar Lagi Melahirkan. *Bangka Pos*, Senin 15 Oktober 2012, viewed 15 April 2013. <http://bangka.tribunnews.com/2012/10/15/suami-tewas-istri-sebentar-lagi-melahirkan>

- Sari, E., Fiona, D.S., Hidayati, N., Nurtjahya, E. (2014) Kandungan Logam Pb, Cu, Zn, Fe, Al, As pada Tumbuhan Dominan di Lahan Pasca Penambangan Timah Desa Bencah, Bangka Selatan (unpublished)
- Satriawan, I. (2013) Lima Jenazah Pekerja Tambang Dipulangkan ke Banten. Bangka Pos, Minggu 10 Maret 2013, viewed 15 April 2013. <http://id.berita.yahoo.com/lima-jenazah-pekerja-tambang-dipulangkan-ke-banten-120411485.html>
- Satriawan, I. (2013) Penambang Timah Terkubur Hidup-hidup. Bangka Pos, Sabtu 9 Maret 2013, viewed 15 April 2013. <http://id.berita.yahoo.com/penambang-timah-terkubur-hidup-hidup-160411767.html>
- Sinar Harapan (2013) Kecelakaan tambang timah, dua orang tewas. <http://sinarharapan.co/news/read/25591/kecelakaan-tambang-timah-dua-orang-tewas> (visited 27 June 2014)
- Sodikin, H. (2011) Pertumbuhan Acropora digitata pada transplantasi karang di pantai Teluk Limau Sungailiat Provinsi Kepulauan Bangka Belitung [skripsi] Pangkalpinang: Jurusan Perikanan Universitas Bangka Belitung, 36 p.
- Sucita, E.Y. (2011) Analisis bioekonomi dampak aktivitas penambangan timah terhadap produksi hasil tangkapan nelayan di Desa Rebo Kabupaten Bangka. [skripsi] Pangkalpinang: Jurusan Perikanan Universitas Bangka Belitung, 56 p.
- Sudiman, N.L., and Resosudarmo, B.P. (2010) Tambang untuk Kesejahteraan Rakyat: Konflik dan Usaha Penyelesaiannya, viewed 15 April 2013. [http://people.anu.edu.au/budy.resosudarmo/2006to2010/Nina\\_Reso\\_2010.pdf](http://people.anu.edu.au/budy.resosudarmo/2006to2010/Nina_Reso_2010.pdf)  
Konflik dan Usaha Penyelesaiannya.
- Sumarman (2011) Kerusakan komunitas karang pada daerah tambang inkonvensional apung (TI Apung) di Pantai Tanjung Kerasak Bangka Selatan. [skripsi] Pangkalpinang: Jurusan Perikanan Universitas Bangka Belitung, 45 p.
- Tribun News (2013) Maraknya penambangan laut, terumbu karang di Bangka rusak parah. <http://www.tribunnews.com/regional/2013/10/17/maraknya-penambangan-laut-terumbu-karang-di-bangka-rusak-parah> (visited 24 June 2014).
- Wahyuni, H., Sasongko, S.B., Sasongko, D.P. (2013) Kandungan logam berat pada air, sedimen dan plankton di daerah penambangan masyarakat Desa Batu Belubang Kabupaten Bangka Tengah. Prosiding Seminar Nasional Pengelolaan Sumberdaya Alam dan Lingkungan 2013, p. 489-494.
- Walhi (2013) 50 persen terumbu karang Babel rusak. <http://www.antaraneews.com/berita/396700/50-persen-terumbu-karang-babel-rusak> (visited 24 June 2014).
- Walhi (2014) Problema timah Bangka: pemerintah harus lebih terbuka. <http://www.walhi.or.id/problema-timah-bangka-pemerintah-harus-lebih-terbuka.html> (visited 27 June 2014)
- Walhi – Friends of the Earth Indonesia (2013) Mari buat Bangka Belitung lebih baik. ITRI Indonesia Tin Forum, Pangkalpinang, 11 December 2013.
- Yulianda, F., Achmad, F., Armin, A.H., Sri, H. and Kusharjani. 2009. Ekologi Ekosistem Perairan Laut Tropis. PUSDIKLAT Kehutanan – Departemen Kehutanan RI, SECEM – Korea International Cooperation Agency. Bogor.
- Zulkarnain, I., Erman, E., Pudjiastuti, T.N., and Mulyaningsih, Y. (2005) Konflik di Kawasan Pertambangan Timah Bangka Belitung: Persoalan dan Alternatif Solusi, LIPI Press, Jakarta, 193 p.