

EN_international/5. Phylogenetic Classification artikel.pdf

By Eddy Nurtjahya



Phylogenetic classification of the world's tropical forests

J. W. Ferry Slik^{a,1}, Janet Franklin^{b,1}, Víctor Arroyo-Rodríguez^c, Richard Field^d, Salomon Aguilar^e, Nikolay Aguirre^f, Jorge Ahumada^g, Shin-Ichiro Aiba^h, Luciana F. Alvesⁱ, Anitha K^j, Andres Avella^k, Francisco Mora^c, Gerardo A. Aymard C.^{l,m}, Selene Báezⁿ, Patricia Balvanera^c, Meredith L. Bastian^o, Jean-François Bastin^p, Peter J. Bellingham^q, Eduardo van den Berg^r, Polyanna da Conceição Bispo^s, Pascal Boeckx^t, Katrin Boehning-Gaese^{u,v}, Frans Bongers^w, Brad Boyle^x, Fabian Brambach^y, Francis Q. Brearley^z, Sandra Brown^{aa,2}, Shauna-Lee Chai^{bb}, Robin L. Chazdon^{cc}, Shengbin Chen^{dd}, Phourin Chhang^{ee}, George Chuyong^{ff}, Corneille Ewango^{gg}, Indiana M. Coronado^{hh}, Jurgi Cristóbal-Azkarateⁱⁱ, Heike Culmsee^{jj}, Kipiro Damas^{kk}, H. S. Dattaraja^{ll}, Priya Davidar^{mm}, Saara J. DeWaltⁿⁿ, Hazimah Din^a, Donald R. Drake^{oo}, Alvaro Duque^{pp}, Giselda Durigan^{qq}, Karl Eichhorn^{rr}, Eduardo Schmidt Eler^{ss}, Tsutomu Enoki^{tt}, Andreas Ensslin^{uu}, Adandé Belarmain Fandohan^{vv}, Nina Farwig^{ww}, Kenneth J. Feeley^{xx}, Markus Fischer^{yy}, Olle Forsshed^{yy}, Queila Souza Garcia^{zz}, Satish Chandra Garkot^{aaa}, Thomas W. Gillespie^{bbb}, Jean-Francois Gillet^{ccc}, Christelle Gonmadje^{ddd,eee}, Iñigo Granzow-de la Cerda^{fff}, Daniel M. Griffith^{ggg}, James Grogan^{hhh}, Khalid Rehman Hakeemⁱⁱⁱ, David J. Harris^{jjj}, Rhett D. Harrison^{kkk}, Andy Hector^{lll}, Andreas Hemp^{mmm}, Jürgen Homeierⁿⁿⁿ, M. Shah Hussain^{ooo}, Guillermo Ibarra-Manríquez^c, I. Faridah Hanum^{ppp}, Nobuo Ima^{qqq}, Patrick A. Jansen^{vvv}, Carlos Alfredo Joly^{rrr}, Shijo Joseph^{sss}, Kuswata Kartawinata^{ttt,uuu}, Elizabeth Kearsley^{vvv}, Daniel L. Kelly^{www}, Michael Kessler^{xxx}, Timothy J. Killeen^{yyy}, Robert M. Kooyman^{zzz,aaaa}, Yves Laumonierⁱ, Susan G. Laurance^{bbb}, William F. Laurance^{bbb}, Michael J. Lawes^{ccc}, Susan G. Letcher^{ddd}, Jeremy Lindsell^{eee}, Jon Lovett^{fff,ggg}, Jose Lozada^{hhh}, Xinghui Luⁱⁱⁱ, Anne Mette Lykke^{jjj}, Khairil Bin Mahmud^{kkkk}, Ni Putu Diana Mahayani^{lll}, Asyraf Mansor^{mmmm,nnnn}, Andrew R. Marshall^{oooo,pppp,qqqq}, Emanuel H. Martin^{rrr}, Darley Calderado Leal Matos^{ssss}, Jorge A. Meave^{tttt}, Felipe P. L. Melo^{uuuu}, Zhofre Huberto Aguirre Mendoza^{vvvv}, Faizah Metali^a, Vincent P. Medjibe^{wwwww}, Jean Paul Metzger^{xxxx}, Thiago Metzker^{zz,yyyy}, D. Mohandass^{mm,zzzz}, Miguel A. Munguia-Rosas^{aaaaa}, Rodrigo Muñoz^{tttt}, Eddy Nurtjahj^{bbbbb}, Eddie Lenza de Oliveira^{cccc}, Onrizal^{ddddd}, Pia Parolin^{eeeee,ffff}, Marc Parren^{ggggg}, N. Parthasarathy^{mm}, Ekananda Paudel^{hhhhh}, Rolando Perez^e, Eduardo A. Pérez-García^{tttt}, Ulf Pommer^u, Lourens Poorter^w, Lan Qie^{ffff}, Maria Teresa F. Piedade^{ss}, José Roberto Rodrigues Pintoⁱⁱⁱⁱ, Axel Dalberg Poulsen^{jjj}, John R. Poulsen^{jjj}, Jennifer S. Powers^{kkkkk}, Rama Chandra Prasad^{llll}, Jean-Philippe Puyravaud^{mmmmm}, Orlando Rangel^k, Jan Reitsmaⁿⁿⁿⁿⁿ, Diogo S. B. Rocha^{oooo}, Samir Rolim^{ppppp}, Francesco Rovero^{qqqqq}, Andes Rozak^{rrrrr}, Kalle Ruokolainen^{sssss}, Ervan Rutishauser^e, Gemma Rutten^{uu}, Mohd. Nizam Mohd. Said^{tttt}, Felipe Z. Saiter^{uuuuu}, Philippe Saner^{vvvvv}, Bráulio Santos^{wwwwww}, João Roberto dos Santos^{xxxxx}, Swapan Kumar Sarker^{yyyyy}, Christine B. Schmitt^{zzzzz,aaaaa}, Jochen Schoengart^{ss}, Mark Schulze^{bbbbb}, Douglas Sheil^{cccc}, Plinio Sist^{ddddd}, Alexandre F. Souza^{eeeeee}, Wilson Roberto Spironello^{ss}, Tereza Sposito^{zz,yyyy}, Robert Steinmetz^{ffff}, Tariq Stevart^{ggggg}, Marcio Seiji Suganuma^{hhhhh}, Rahayu Sukri^a, Aisha Sultanaⁱⁱⁱⁱ, Raman Sukumar^{ll}, Terry Sunderland^{ll}, Supriyadi^{llll}, H. S. Suresh^{ll}, Eizi Suzuki^h, Marcelo Tabarelli^{jjjjj}, Jianwei Tang^{kkkkk}, Ed V. J. Tanner^{lllll}, Natalia Targhetta^{ss}, Ida Theilade^{mmmmm}, Duncan Thomasⁿⁿⁿⁿⁿ, Jonathan Timberlake^{gggg}, Márcio de Morisris Valeriano^{xxxx}, Johan van Valkenburg^{ooooo}, Tran Van Do^{ppppp}, Hoang Van Sam^{qqqqq}, John H. Vandermeer^{rrrrr}, Hans Verbeek^{vvv}, Ole Reidar Vetaas^{sssss}, Victor Adekunle^{ttttt}, Simone A. Vieira^{rrr}, Campbell O. Webb^{uuuuu}, Edward L. Webb^{vvvvv}, Timothy Whitfield^{wwwwww}, Serge Wich^{xxxxx,yyyyy}, John Williams^{zzzzz}, Susan Wiser^d, Florian Wittmann^{aaaaa}, Xiaobo Yang^{bbbbb}, C. Yves Adou Yao^{cccc}, Sandra L. Yap^{ddddd}, Rakan A. Zahawi^{eeeeee}, Rahmad Zakaria^{mmmm}, and Runguo Zangⁱⁱⁱ

Contributed by Janet Franklin, December 12, 2017 (sent for review September 7, 2017; reviewed by Lucas C. Majure and Jens-Christian Svenning)

Author contributions: J.W.F.S. and J.F. designed research; J.W.F.S. and J.F. performed research; J.W.F.S., V.A.-R., R.F., S.A., N.A., J.A., S.-I.A., L.F.A., A.K., A.A., F. Mora, G.A.A.C., S. Báez, P. Balvanera, M.L.B., J.-F.B., P.J.B., E.v.d.B., P.d.C.B., P. Boeckx, K.B.-G., F. Bongers, B.B., F. Brambach, F.Q.B., S. Brown, S.-L.C., R.L.C., S.C., P.C., G.C., C.E., I.M.C., J.C.-A., H.C., K.D., H.S.D., P.D., S.J.D., H.D., D.R.D., A.D., G.D., K.E., E.S.E., T.E., A.E., A.B.F., N.F., K.J.F., M.F., O.F., Q.S.G., S.C.G., T.W.G., J.-F.G., C.G., I.G.-d.J.C., D.M.G., J.G., K.R.H., D.J.H., R.D.H., A. Hector, A. Hemp, J.H., M.S.H., G.I.-M., I.F.H., N.I., P.A.J., C.A.J., S.J., K.K., E.K., D.L.K., M.K., T.J.K., R.M.K., Y.L., S. G. Laurance, W.F.L., M.J.L., S. G. Letcher, J. Lindsell, J. Lovett, J. Lozada, X.L., A.M.L., K.B.M., N.P.D.M., A.M., A.R.M., E.H.M., D.C.L.M., J.A.M., F.P.L.M., Z.H.A.M., F. Metali, V.P.M., J.P.M., T.M., D.M., M.A.M.-R., R.M., E.N., E.L.d.O., O., P.P., M.P., N.P., E.P., R.P., E.A.P.-G., U.P., L.P., L.Q., M.T.F.P., J.R.R.P., A.D.P., J.R.P., J.S.P., R.C.P., J.-P.P., O.R., J.R., D.S.B.R., S.R., F.R., A.R., K.R., E.R., G.R., M.N.M.S., F.Z.S., P. Saner, B.S., J.R.d.S., S.K.S., C.B.S., J.S., M.S., D.S., P. Sist, A.F.S., W.R.S., T. Sposito, R. Steinmetz, T. Stevart, M.S.S., R. Sukri, A.S., R. Sukumar, T. Sunderland, S., H.S.S., E.S., M.T., J. Tang, E.V.J.T., N.T., I.T., D.T., J. Timberlake, M.d.M.V., J.v.V., T.V.D., H.V.S., J.H.V., H.V., O.R.V., V.A., S.A.V., C.O.W., E.L.W., T.W., S. Wich, J.W., S. Wiser, F.W., X.Y., C.Y.A.Y., S.L.Y., R.A.Z., R. Zakaria, and R. Zang contributed new reagents/analytic tools; J.W.F.S. and V.A.-R. analyzed data; and J.W.F.S., J.F., V.A.-R., R.F., S.A., N.A., J.A., S.-I.A., L.F.A., A.K., A.A., F. Mora, G.A.A.C., S. Báez, P. Balvanera, M.L.B., J.-F.B., P.J.B., E.v.d.B., P.d.C.B., P. Boeckx, K.B.-G., F. Bongers, B.B., F. Brambach, F.Q.B., S. Brown, S.-L.C., R.L.C., S.C., P.C., G.C., C.E., I.M.C., J.C.-A., H.C., K.D., H.S.D., P.D., S.J.D., H.D., D.R.D., A.D., G.D., K.E., E.S.E., T.E., A.E., A.B.F., N.F., K.J.F., M.F., O.F., Q.S.G., S.C.G., T.W.G., J.-F.G., C.G., I.G.-d.J.C., D.M.G., J.G., K.R.H., D.J.H., R.D.H., A. Hector, A. Hemp, J.H., M.S.H., G.I.-M., I.F.H., N.I., P.A.J., C.A.J., S.J., K.K., E.K., D.L.K., M.K., T.J.K., R.M.K., Y.L., S. G. Laurance, W.F.L., M.J.L., S. G. Letcher, J. Lindsell, J. Lovett, J. Lozada, X.L., A.M.L., K.B.M., N.P.D.M., A.M., A.R.M., E.H.M., D.C.L.M., J.A.M., F.P.L.M., Z.H.A.M., F. Metali, V.P.M., J.P.M., T.M., D.M., M.A.M.-R., R.M., E.N., E.L.d.O., O., P.P., M.P., N.P., E.P., R.P., E.A.P.-G., U.P., L.P., L.Q., M.T.F.P., J.R.R.P., A.D.P., J.R.P., J.S.P., R.C.P., J.-P.P., O.R., J.R., D.S.B.R., S.R., F.R., A.R., K.R., E.R., G.R., M.N.M.S., F.Z.S., P. Saner, B.S., J.R.d.S., S.K.S., C.B.S., J.S., M.S., D.S., P. Sist, A.F.S., W.R.S., T. Sposito, R. Steinmetz, T. Stevart, M.S.S., R. Sukri, A.S., R. Sukumar, T. Sunderland, S., H.S.S., E.S., M.T., J. Tang, E.V.J.T., N.T., I.T., D.T., J. Timberlake, M.d.M.V., J.v.V., T.V.D., H.V.S., J.H.V., H.V., O.R.V., V.A., S.A.V., C.O.W., E.L.W., T.W., S.W., J.W., S. Wiser, F.W., X.Y., C.Y.A.Y., S.L.Y., R.A.Z., R. Zakaria, and R. Zang wrote the paper.

Reviewers: L.C.M., Desert Botanical Garden; and J.-C.S., Aarhus University.

Conflict of interest statement: V.A.-R., K.B.-G., B.B., F.Q.B., N.F., M.K., W.F.L., S. G. Letcher, C.B.S., D.S., T. Stevart, and S. Wiser have coauthored papers with Jens-Christian Svenning in the 48 months. A.M.L. and Jens-Christian Svenning are both affiliated with Aarhus University.

This is an access article distributed under Creative Commons Attribution-NonCommercial-NoDerivatives License 4.0 (CC BY-NC-ND).

¹To whom correspondence may be addressed. Email: ferryslik@hotmail.com or janet.franklin@ucr.edu.

²ceased February 13, 2017.

This article contains supporting information online at www.pnas.org/lookup/suppl/doi:10.1073/pnas.1714977115/-/DCSupplemental.

2
Knowledge about the biogeographic affinities of the world's tropical forests helps to better understand regional differences in forest structure, diversity, composition, and dynamics. Such understanding will enable anticipation of region-specific responses to global environmental change. Modern phylogenies, in combination with broad coverage of species inventory data, now allow for global biogeographic analyses that take species evolutionary distance into account. Here we present a classification of the world's tropical forests based on their phylogenetic similarity. We identify five principal floristic regions and their floristic relationships: (i) Indo-Pacific, (ii) Subtropical, (iii) African, (iv) American, and (v) Dry forests. Our results do not support the traditional neo- versus paleotropical forest division but instead separate the combined American and African forests from their Indo-Pacific counterparts. We also find indications for the existence of a global dry forest region, with representatives in America, Africa, Madagascar, and India. Additionally, a northern-hemisphere Subtropical forest region was identified with representatives in Asia and America, providing support for a link between Asian and American northern-hemisphere forests.

biogeographic legacies | forest classification | forest functional similarity | phylogenetic community distance | tropical forests

The biogeographic origin of species, in combination with dispersal limitation and environmental filtering, are the principal determinants of spatial variation in the species composition of tropical forests (1, 2). Despite evidence of long-distance dispersal (1, 3–5), tropical forests maintain conspicuous regional differences in species composition. For example, only ~4% of tropical tree species are shared among Africa, America, and Asia (6). The lack of species overlap among continents makes global inference of relationships among tropical forests problematic, because such classifications depend on comparison of the amount of shared species. Therefore, pan-tropical biogeographic analyses have been based on comparison of compositional patterns at higher taxonomic levels, namely genus or family (6–8). However, such analyses treat taxa as independent units, while in reality taxa vary in their degree of phylogenetic relatedness and, as a consequence, their morphological and ecological similarity (1, 2). Taking phylogenetic relatedness into consideration enhances our ability to delimit phylogeographical boundaries that characterize functional and biogeographic affinities among forest regions (1, 2, 9, 10). Here we include phylogenetic relationships in a floristic analysis to provide such insight.

We compiled a standardized dataset of old-growth tropical forest inventories of angiosperm trees (trunk diameter ≥ 10 cm) for 406 1° latitude/longitude grid cells (hereafter referred to as “locations”) originally dominated by natural forests across the (sub)tropics (Table S1). These locations represented all major tropical forest regions and had broad environmental amplitude, including low to high elevations and dry to wet forests (Fig. 1 and Fig. S1). To determine the phylogenetic distance between locations, we constructed a dated phylogenetic tree that was resolved to genus level and contained all taxa used for our classification analyses (Dataset S1). Location pairwise phylogenetic distance matrices were constructed using 20 randomly drawn tree taxa per location. We used 20 taxa, as this maximized the number of locations that could be included in the classification analyses while still providing a reliable classification result. In total, we generated 20 phylogenetic distance matrices, each with a different set of 20 randomly drawn taxa per location, which served as input for 20 cluster analyses (Fig. S2). The final classification of each location depended on the frequency with which it was classified in a particular cluster across all 20 cluster analyses (Fig. S3). Relationships between the clusters were represented by a majority rule consensus tree (Fig. 1).

Significance

Identifying and explaining regional differences in tropical forest dynamics, structure, diversity, and composition are critical for anticipating region-specific responses to global environmental change. Floristic classifications are of fundamental importance for these efforts. Here we provide a global tropical forest classification that is explicitly based on community evolutionary similarity, resulting in identification of five major tropical forest regions and their relationships: (i) Indo-Pacific, (ii) Subtropical, (iii) African, (iv) American, and (v) Dry forests. African and American forests are grouped, reflecting their former western Gondwanan connection, while Indo-Pacific forests range from eastern Africa and Madagascar to Australia and the Pacific. The connection between northern-hemisphere Asian and American forests is confirmed, while Dry forests are identified as a single tropical biome.

Results and Discussion

Mean pairwise phylogenetic distance analysis, which emphasizes ancient lineages in phylogenetic community comparisons, detected almost no spatial patterns in community phylogenetic similarity across the tropics, indicating that all tropical forest locations consist of more or less the same set of ancient plant lineages. This is in accordance with recent findings that the whole present-day tropics are dominated by similar high levels of Late Cretaceous aged phylogenetic lineages (11). Only when we used mean nearest taxon distance, which emphasizes recent lineages in phylogenetic community comparisons, did we detect clear spatial patterns across the tropics. Therefore, current-day biogeographic patterns in the tropics seem to mainly reflect Cenozoic speciation events when Gondwanan breakup was already well on its way.

Using the mean nearest taxon distance, our phylogenetic cluster analyses showed that the world's tropical forests are divided into two major floristic regions: a combined American-African versus Indo-Pacific region (Fig. 1). This division contradicts previous hypotheses about major global realms, which either recognized neo- versus paleotropical regions or several separate continental regions (4, 12–14). However, Gentry (7) already noted the high generic-level similarity of tropical American and African forests. He attributed this to Cretaceous and Cenozoic plate tectonic history (4, 15). Subsequent studies have shown that despite the severing of direct land connections between the African and South American plates ca. 96 Mya, long-distance dispersal continued throughout the Late Cretaceous and Early Tertiary across the widening Atlantic Ocean (4, 5). The combined effect of shared origin with trans-Atlantic migration may explain the detected connection between South American and African forests.

Within the American-African cluster, the first split separated the African from the American regions (Fig. 1), suggestive of the west Gondwanan breakup associated with the formation of the Atlantic Ocean and, over time, the increasing difficulty for plants to disperse across the Atlantic (1, 15). Interestingly, the African region showed the highest consistency in clustering of all five identified floristic regions. On average, locations belonging to the African region were assigned to this cluster in 91.4% of cases, versus consistency values of 79.5, 63.7, 79.5, and 70.3% for the Indo-Pacific, Subtropical, American, and Dry forest regions, respectively. This clustering consistency indicates high floristic similarity across tropical Africa, which is in accord with the relatively low beta diversity observed for these forests (6). Postulated repeated cycles of contraction and expansion of the tropical African forests from a few small forest refugia in combination

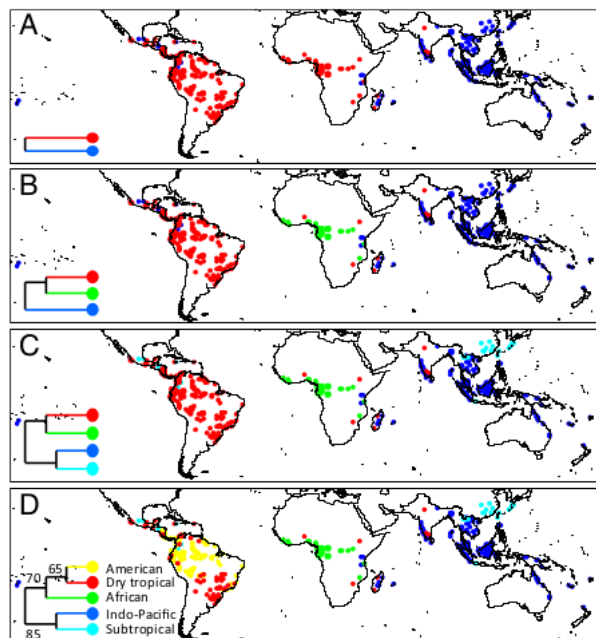


Fig. 1. Classification maps of the world's tropical forests, showing 95% (A), three (B), four (C), and five (D) clusters. Cluster result represents a majority rule consensus tree, with the percentage of times that each grouping was observed in the 20 separate cluster analyses shown in D. Only locations that could be classified with certainty ($P < 0.05$) are shown ($n = 392$).

with large-scale species shifts during the Pleistocene glaciations may explain the relatively high compositional homogeneity of the forests within the African region (16, 17).

The tropical American forests were further divided into moist and dry forests (Fig. 1 and Fig. S1), indicating that this division is primarily environmental (18). The American floristic region comprises humid forests, including the lowland forests of Central America, the Amazon basin, the Guianas, and the northern half of the Atlantic forest. The Dry forest region encompasses the Caatinga and Cerrado regions as well as other dry forests throughout the Americas but interestingly, and contrary to the nonphylogenetic pan-tropical analysis by Dexter et al. (8), also includes dry forests of Africa, Madagascar, and India. Further research is needed to confirm whether this indicates the existence of a global dry forest region with a shared biogeographic origin, or whether selection for drought and fire resistance has favored the dominance of similar plant lineages in tropical dry forests around the world (8, 18, 19).

The Indo-Pacific floristic region occupies the humid areas of eastern Africa, Madagascar, India, Southeast Asia, Australia, and the Pacific Islands (Fig. 1). With the exception of SE Asia, which is of Laurasian origin, this floristic region combines all areas that once comprised eastern Gondwana (4, 15). Given the diverse geologic history of Asia and the Indo-Pacific (20), it is surprising to find a similar forest type covering most of the region. Nevertheless, there is strong evidence of significant plant migration within this region that likely had a homogenizing effect, notably the biotic exchange between India and Southeast Asia starting from ca. 45 Mya (21), and between Southeast Asia and Australia, New Guinea, and the Pacific Islands that commenced ca. 15 Mya (4). The presence of Indo-Pacific forests in eastern continental Africa may either reflect eastern Gondwanan origin or dispersal within the Indo-Pacific region.

We also identified a group of locations in Asia and America that occupies cooler climates and higher elevations relative to the other identified forest clusters (Fig. 1 and Fig. S1), and which we therefore termed the Subtropical region. This Subtropical floristic region confirms the floristic link between Asia and North America, reflecting a shared boreotropical affinity (22). Within Asia, the Subtropical region is mostly restricted to the subtropics, with the exception of high-elevation forests of Java. In the Americas, by contrast, this floristic region extends from the subtropics deep into the tropics, probably because the cooler montane climate of the Central American highlands and South American Andes has facilitated the southward migration of cold-adapted plant lineages. The absence of continuous, North-South-oriented mountain chains in Asia may have limited the dispersal of such lineages into lower latitudes.

Conclusion

We provide a phylogenetic distance-based biogeographic classification of the world's tropical forests, using the most extensive sampling scheme for the tropics currently in existence. Our results uncover floristic patterns which will help in the development of region-specific models for forest structure, diversity, and dynamics as well as possible responses of tropical forest regions to global environmental change. Our results may necessitate reconsideration of established biogeographic ideas. For example, Madagascar and New Guinea have often been considered two separate major tropical regions, ecologically and biogeographically distinct from tropical America, Africa, and Southeast Asia (23, 24). However, despite their highly endemic species compositions, we show that they are both part of the widespread Indo-Pacific floristic region. Finally, our analysis can serve as a model for classifying regional floras.

Materials and Methods

Tree Inventory Dataset. Individual angiosperm trees (diameter at breast height ≥ 10 cm) from old-growth forest inventories throughout the (sub)tropics (between -35° S and 35° N latitudes) were pooled within their respective 1° latitude/longitude grid cells (henceforth called locations). These locations represented all major tropical forest regions and had broad environmental amplitude, including low to high elevations and dry to wet forests (Fig. S1). Monocots and Cactaceae were excluded because these were not consistently surveyed in all datasets. This dataset originally included 63 locations containing 925,009 individual trees belonging to 15,012 taxa. 82 species names were standardized using The Plant List (www.theplantlist.org), Taxonomic 75 the Resolution Service (tnrs.plantcollaborative.org/TNRSapp.html), and Asian Plant Synonym Lookup (phylodiversity.net/fslk/synonymlookup.htm). On average, 1.4% of individual stems per location remained unidentified. These unidentified individuals were excluded from further analyses.

Community Phylogenetic Tree. The APG-III classification (25) served as the family-level backbone of our community phylogenetic tree. Recent updates in APG-IV (26) are mostly of nomenclatural nature and did not affect our analyses. This tree was further resolved up to genus level using the species-level phylogeny (32,223 species included) published by Zanne et al. (27), which covered most genera in our dataset (Dataset S1). Genera present in our dataset, but not in Zanne et al. (27), were placed at the base of their respective families. Genera that had disjunct species occurrences in the phylogeny of Zanne et al. (27) were placed at the most basal node connecting the disjunct species. This phylogeny was subsequently dated using the BLADJ function in Phylocom v4.2 (28), using taxon ages given in Magallón et al. (29) for the age file.

Phylogenetic Distance Analysis. Phylogenetic distance between all pairs of locations was calculated using the options COMDIST and COMDISTNT in Phylocom v4.2 (28). COMDIST uses the mean pairwise phylogenetic distance (MPPD); for each taxon in a location, it finds the average phylogenetic distance to all taxa in the other location, and calculates the mean. COMDISTNT uses the mean nearest taxon distance (MNTD); for each taxon in location 1, it finds the nearest phylogenetic neighbor in location 2, records this, and calculates the mean. Both functions return a symmetrical matrix of locations

versus locations with their pairwise phylogenetic distances. Principal coordinate (PCO) analyses (in MultiVariate Statistical Package v3.13; Kovach Computing Services) on resulting location versus location matrices showed that the MPPD matrices had almost no explanatory power (generally the first five PCO axes explained less than 5% of data variance), meaning that detected patterns were mostly random. The MNTD matrices, however, explained considerable amounts of data variance in the first five axes of the PCO. Therefore, we used only MNTD for further analysis.

Correcting for Taxon Richness Bias in MNTD. Taxon richness differed considerably between locations, varying between 4 and 1,466. MNTD may be sensitive to such differences in taxon richness because the chance of finding a close relative between two locations may increase when their taxon richness increases. Applying MNTD to determine phylogenetic distance between locations with differing taxon numbers could therefore result in taxon-rich locations being grouped together in the cluster analysis simply because they are more taxon-rich. To determine the impact of this effect, we created five “location-by-taxon” matrices, each with a lower number of taxa per location (320, 160, 80, 40, and 20 taxa per location), using the 41 locations containing more than 320 taxa. For each location, taxa were ranked according to abundance, so that the location-by-taxon matrix based on, for example, 320 taxa consisted only of the 320 most abundant taxa per location. Where tied abundances exceeded the predefined number of taxa, we randomly selected the appropriate number of taxa from among those with tied minimum abundance. We then calculated the MNTD matrices for each of these five location-by-taxon matrices and found that with increasing taxon richness of locations, MNTD (as averaged over all locations) decreased with increasing taxon richness per location following a power function [$y = 310.4x^{-0.194}$ (Fig. S4)], demonstrating that MNTD is indeed sensitive to taxon richness.

Determining the Optimal Number of Taxa per Location for Further Analysis. To avoid taxon richness bias when using MNTD, locations had to be compared based on similar numbers of taxa. Minimum variance clustering, based on the five location-by-taxon matrices described earlier, consistently recovered the same major clusters in the same configuration (African and American locations clustered on one main branch and Asian locations clustered on the other), although the relationships between locations within these main clusters could vary (Fig. S5). Only in the 20-taxon analysis was one American location (location no. 165 from the Brazilian Atlantic Forest) placed in the Asian cluster. The amount of variance captured in the first five axes of a PCO analysis (using the same MNTD matrices) declined by only ~20%, from 83.3 to 60.7%, between the 320- and 20-taxon analyses, respectively. We decided to use 20 taxa per location in the final analyses (Table S1) because of this limited loss of information in the PCO and similarity of cluster results. In addition, we were able to use most of our locations (406 of the initial 439), including locations on remote islands and extreme habitats that would have been excluded if we had set the minimum number of taxa too high.

Forest Classification Analyses. For the final analyses, we produced 20 location-by-taxon datasets. In these datasets, each location was represented by 20 randomly drawn taxa (from that location). Random draws were irrespective of taxon abundance, as abundance is a spatially and temporally labile taxon trait that likely reflects contemporary environmental conditions rather than historical biogeographic signal. For each of these 20 location-by-taxon datasets, we calculated the corresponding symmetrical location-by-location matrices with their pairwise phylogenetic distances (MNTD). These matrices were then used as input for cluster analyses.

Locations were grouped in clusters using Ward’s minimum variance method (30), using MultiVariate Statistical Package v3.13. This is a centroid-based clustering technique that identifies cluster centers (centroids) by minimizing the overall squared distances of the objects (in this case locations) to the

centroids at each cluster level. This clustering technique identified spatially clearly defined location groupings (Fig. S2). The optimal number of clusters for defining floristic regions across the tropics was determined by calculating the cophenetic correlation coefficient at each cluster level, starting at the first split (K2) in the dendrogram. The cophenetic correlation coefficient calculates the correlation between the distance of the clusters as calculated by the clustering algorithm and the distance based on observed MNTD values between clusters. The higher the cophenetic correlation, the better the cluster result reflects the patterns present in the original distance matrix. We applied this method to each of our 20 datasets, calculated the average cophenetic correlation coefficient for each cluster level, and found a steep increase in cophenetic correlation up to K5, after which it slowly declined (Fig. S6). Therefore, we chose K5 as the optimum level for defining our main floristic regions across the tropics.

For each location, at cluster level K5, we determined the cluster in which it was classified for each of the 20 cluster analyses that we performed. The location was then assigned to the cluster in which it had the highest proportion of observations. A single proportion test (31), which calculates the probability of an observed (sample) proportion (in the range 0 to 1) against a hypothetical proportion, was then used to determine if the observed proportions were significantly higher than expected by random [Paleontological Statistics (PAST) v3.08; <https://folk.uio.no/ohammer/past/>]. For example, for K5, the expected random proportion of locations per cluster is 0.2. For a sample size of 20, a proportion has to be at least 0.38 to be significantly higher ($P < 0.05$) than the random expectation. The resulting classification success rates of locations for K5 are shown in Fig. S3 and Table S1. The final classification (K5) of the clusters was based on the majority consensus rule (Fig. 1).

ACKNOWLEDGMENTS. This study benefited greatly from data contributed by Patricia Alvarez-Loayza, Ana Andrade, Peter Ashton, Julian Bayliss, Luis Bernacci, Lilian Blanc, J. Bogaert, Matt Bradford, Mireille Breuer Ndooundou Hockemba, C. De Cannière, Miguel Castillo, Eduardo Catharino, Connie Clark, David Clark, Deborah Clark, Gilles Dauby, Jean-Louis Doucet, Pedro Eisenlohr, Leandro Ferreira, Christine Fletcher, Geraldo Franco, Gabriella M. Fredriksson, Giriraj, Nimal Gunatilleke, Terese Hart, Miriam van Heist, Zhila Hemati, M. A. Hernández-Ruedas, David Kenfack, Kanehiro Kitayama, Eileen Larney, Ieda Leao do Amaral, Jean-Remy Makana, Punci Manage Saranga Amila Ruwan, Antti Marjokorpi, Olga Martha Montiel, Miguel Martínez-Ramos, Henrik Meilby, Jerome Millet, Cao Min, Kazuki Miyamoto, Xiaoxue Mo, Juan Carlos Montero, Badru Mugerwa, Pantaleo Munishi, Helen Murphy, Hidetoshi Nagamasu, David Newbery, Rueben Nilus, Meyner Nuslawo, Susana Ochoa-Gaona, Atila Oliveira, Navendu Page, Andrea Permana, Nigel Pitman, Jean Razafimahaimodison, Rocío Rojas, Hugo Romero, M. Z. Rozainah, Fernanda Santos, Manichanh Satdichanh, Lars Schmidt, Lila Nath Sharma, Kade Sidiyasa, Eduardo da Silva Pinheiro, Peguy Tchoutou, Johanna Urtado, Renato Valencia, Luis Valenzuela, Rodolfo Vasquez, Thorsten Wiegand, Guadalupe Williams-Linera, Hansjoerg Woll, Tsuyoshi Yoneda, and Nicole Zweifel. We also acknowledge contributed financial support from the European Union’s Horizon 2020 Research and Innovation Programme under Marie Skłodowska-Curie Grant Agreement 660020, Instituto Bem Ambiental (IBAM), Myr Projetos Sustentáveis, IEF, and CNPq, CAPES FAPEMIG, German Research Foundation (DFG; Grants CRC 552, CU127/3-1, HO 3296/2-2, HO3296/4-1, and RU 816), UNAM-PAPIIT IN218416 and Semarnat-CONACYT 128136, Conselho Nacional de Desenvolvimento Científico e Tecnológico (CNPq, Brazil), Fundação Grupo Boticário de Proteção à Natureza/Brazil, PAPIIT-DGAPA-UNAM (Project IN-204215), National Geographic Society, National Foundation for Scientific and Technology Development Vietnam (Grant 106.11-2010.68), Operation Wallacea, and core funding for Crown Research Institutes from the New Zealand Ministry of Business, Innovation and Employment’s Science and Innovation Group. Some data in this publication were provided by the Tropical Ecology Assessment and Monitoring Network, a collaboration between Conservation International, the Missouri Botanical Garden, Smithsonian Institution, and Wildlife Conservation Society, and partially funded by these institutions, The Gordon and Betty Moore Foundation, and other donors.

¹Environmental and Life Sciences, Faculty of Science, Universiti Brunei Darussalam, Gadong BE1410, Brunei Darussalam; ²Department of Botany and Plant Sciences, University of California, Riverside, CA 92521; ³Instituto de Investigaciones en Ecosistemas y Sustentabilidad, Universidad Nacional Autónoma de México, 58190 Manáhuatl, Michoacán, México; ⁴School of Geography, University of Nottingham, Nottingham NG7 2RD, United Kingdom; ⁵Center for Tropical Forest Science, Smithsonian Tropical Research Institute, Ancon, Panama; ⁶Biodiversity and Ecosystem Services Research Program, Universidad Nacional de Loja, Loja EC110103, Ecuador; ⁷The Moore Center for Science Conservation International, Arlington, VA 22202; ⁸Graduate School of Science and Engineering, Kagoshima University, Kagoshima 890-0065, Japan; ⁹Center for Tropical Research, Institute of the Environment and Sustainability, University of California, Los Angeles, CA 90095; ¹⁰Forest and Environment Program, Center for International Forestry Research (CIFOR), Bogor 16115, Indonesia; ¹¹Instituto de Ciencias Naturales, Universidad Nacional de Colombia, Sede Bogotá 111321, Colombia; ¹²LEZ-Guanare, Programa de Ciencias del Agro y el Mar, Herbario Universitario (PORT), Casa de Cavacas, Estado Portuguesa 3350, Venezuela; ¹³Competition International Progress S.A.—Ciprogress Greenlife, Bogotá D.C., Colombia; ¹⁴Departamento de Biología, Escuela Politécnica Nacional del Ecuador, Ladrón de Camé, E11-253, Canto, Ecuador; ¹⁵Smithsonian’s National Zoo, Animal Care Sciences, Primate, Washington, DC 20013-7012; ¹⁶Institute of Integrative Biology, Department of Environmental Systems Science, ETH Zurich, 8092 Zurich, Switzerland; ¹⁷Landcare Research, Manaaki Whenua, Lincoln 7640, New Zealand; ¹⁸Departamento de Biologia, Universidade Federal de Lavras, Lavras-MG, 37200-000, Brazil; ¹⁹Centre for Landscape and Climate

Research, Department of Geography, University of Leicester, Leicester LE1 7RH, United Kingdom; ¹Isotope Bioscience Laboratory (ISOFYS), Department of Green Chemistry and Technology, Faculty of Bioscience Engineering, Ghent University, B-9000 Ghent, Belgium; ²Senckenberg Biodiversity and Climate Research Centre (BIK-F), 60311 Frankfurt (Main), Germany; ³Institute for Ecology, Evolution and Diversity, Goethe University Frankfurt, 60439 Frankfurt (Main), Germany; ⁴Forest Ecology and Forest Management Group, Wageningen University & Research, 6700 AA Wageningen, The Netherlands; ⁵Hardner & Gullison Associates, Victoria, BC V8P 1A9, Canada; ⁶Ecology and Ecosystem Research, Georg August University Göttingen, 37073 Göttingen, Germany; ⁷School of Science and the Environment, Manchester Metropolitan University, Manchester M1 5GD, United Kingdom; ⁸Environment Group, Winrock International, St Dogmaels SA43 3 DT, United Kingdom; ⁹Ecosystem Management Unit, InnoTech Alberta, Vegreville, AB T9C 1T4, Canada; ¹⁰Department of Ecology and Evolutionary Biology, University of Connecticut, Storrs, CT 06269-3043; ¹¹College of Environment and Ecology, Chongqing University of Technology, Chongqing 610059, China; ¹²Forest and Wildlife Research Institute, 12101 Phnom Penh, Cambodia; ¹³Department of Botany and Plant Physiology, University of Buea, P.O. Box 63 Buea, Cameroon; ¹⁴Wildlife Conservation Society-Program DR Congo, B.P. 14537 Brazzaville, DR Congo; ¹⁵Departamento de Biología, Facultad de Ciencias y Tecnología, Universidad Nacional Autónoma de Nicaragua, Herbario HULE, León 505, Nicaragua; ¹⁶Division of Biological Anthropology, University of Cambridge, Cambridge CB2 3QG, United Kingdom; ¹⁷DBU Natural Heritage, German Federal Foundation for the Environment, 49090 Osnabrück, Germany; ¹⁸PNG Forest Research Institute, Lae 411, Morobe Province, Papua New Guinea; ¹⁹Centre for Ecological Sciences, Indian Institute of Space and Astronautical Sciences, Vikram Sarabhai Space Centre, Thiruvananthapuram 700 16, India; ²⁰Department of Ecology and Environmental Sciences, Portland State University, Puducherry 605014, India; ²¹Department of Biological Sciences, Clemson University, Clemson, SC 29634; ²²Botany Department, University of Hawaii, Honolulu, HI 96822; ²³Departamento de Ciencias Forestales, Universidad Nacional de Colombia, Medellín 500023, Colombia; ²⁴Laboratório de Ecologia e Hidrologia Florestal, Floresta Estadual de Assis, Instituto Florestal de SP, 19802-970 Assis, SP, Brazil; ²⁵Eichhornia Ecology, 31702 BK Zeist, The Netherlands; ²⁶Instituto Nacional de Pesquisas da Amazônia-INPA, Araújo, CEP 69067-375 Manaus AM, Brazil; ²⁷Kasuya Research Forest, Kyushu University, Sasaguri, Fukuoka 811-2415, Japan; ²⁸Institute of Plant Sciences, University of Bern, 3013 Bern, Switzerland; ²⁹Ecole de Foresterie et Ingénierie du Bois, Université Nationale d'Agriculture, BP 2000 Kétou, Benin; ³⁰Conservation Ecology, Faculty of Biology, Philipps-Universität Marburg, 35032 Marburg, Germany; ³¹Department of Biology, University of Miami, Coral Gables, FL 33146; ³²WWF-Sweden/Världsnaturfonden WWF, Ulrika Slott, S-170 81 Solna, Sweden; ³³Departamento de Botânica, Universidade Federal de Minas Gerais, Pampulha, 31270-901 Belo Horizonte, Minas Gerais, Brazil; ³⁴School of Environmental Sciences, Jawahar Nehru University, New Delhi 110067, India; ³⁵Department of Geography, University of California, Los Angeles, CA 90095; ³⁶TERRA Team and Research Center, Central African Forests, Gembloux Agro-Bio Tech, University of Liège, B-5030 Gembloux, Belgium; ³⁷Department of Plant Biology, Faculty of Sciences, University of Yaounde I, Yaounde, BP 812, Cameroon; ³⁸National Herbarium, Yaoundé, BP 20818, Cameroon; ³⁹CREAF, Universitat Autònoma de Barcelona, Ordinyola del Vallès 08193, Spain; ⁴⁰Universidad Técnica Particular de Loja, Loja 1101608, Ecuador; ⁴¹Mount Holyoke College Botanic Garden, 911 Hadley, MA 01075; ⁴²Department of Biological Sciences, Faculty of Science, King Abdulaziz University, Jeddah 21589, Saudi Arabia; ⁴³Royal Botanic Garden Edinburgh, Edinburgh EH3 5LR, United Kingdom; ⁴⁴World Agroforestry Centre, East and Southern Africa Region, Woodlands, Lusaka, Zambia; ⁴⁵Department of Plant Sciences, University of Oxford, Oxford OX1 3RB, United Kingdom; ⁴⁶Department of Plant Systematics, University of Bayreuth, 95440 Bayreuth, Germany; ⁴⁷Plant Ecology, Albrecht von Haller Institute of Plant Sciences, Georg August University Göttingen, 37073 Göttingen, Germany; ⁴⁸Biodiversity Parks Programme, Centre for Environmental Management of Degraded Ecosystems, University of Delhi, Delhi 110007, India; ⁴⁹Faculty of Forestry, Universiti Putra Malaysia, Serdang-43400, Selangor, Malaysia; ⁵⁰Department of Forest Science, Tokyo University of Agriculture, Tokyo 156-8502, Japan; ⁵¹UNICAMP, Cidade Universitária Zeferino Vaz-Barão Geraldo, Campinas, Sao Paulo 13083-970, Brazil; ⁵²Geographic Information Systems Remote Sensing Department, Kerala Forest Research Institute, Peechi, Kerala 680653, India; ⁵³Integrative Research Center, The Field Museum, Chicago 60605; ⁵⁴Herbarium Bogoriense, Research Center for Biology, Indonesian Institute of Sciences, Cibinong 16911, Indonesia; ⁵⁵Computational and Applied Vegetation Ecology (CAVELab), Department of Environment, Faculty of Bioscience Engineering, Ghent University, Ghent 9000, Belgium; ⁵⁶Trinity Centre for Biodiversity Research, Trinity College, The University of Dublin, Dublin 2, Ireland; ⁵⁷Department of Systematic and Evolutionary Botany, University of Zurich, 8008 Zurich, Switzerland; ⁵⁸Agteca-Amazonica, Santa Cruz, Bolivia; ⁵⁹Department of Biological Sciences, Macquarie University, North Ryde 2109, Australia; ⁶⁰National Herbarium of New South Wales, Royal Botanic Gardens and Domain Trust, Sydney, NSW 2000, Australia; ⁶¹Centre for Tropical Environmental and Sustainability Science and College of Science and Engineering, James Cook University, Cairns, QLD 4878, Australia; ⁶²School of Life Sciences, University of KwaZulu-Natal, Pietermaritzburg 3209, South Africa; ⁶³Department of Plant Biology, College of the Atlantic, P.O. Box 13000, Salisbury, ME 04069; ⁶⁴The RSPB Centre for Conservation, Sandy, Bedfordshire SG19 2PL, United Kingdom; ⁶⁵School of Geography, University of Leeds, Leeds LS2 9JT, United Kingdom; ⁶⁶Herbarium, Royal Botanic Gardens Kew, Richmond Surrey TW9 3AB, United Kingdom; ⁶⁷Facultad de Ciencias Forestales y Ambientales, Universidad de Los Andes, Mérida 5101-A, Venezuela; ⁶⁸Key Laboratory of Forest Ecology and Environment of State Forestry Administration, Institute of Forest Ecology, Environment and Protection, Chinese Academy of Forestry, Beijing 100091, China; ⁶⁹Department of Bioscience, Aarhus University, 8600 Silkeborg, Denmark; ⁷⁰Faculty of Biosources and Food Sciences, Universiti Sultan Zainal Abidin, 20300, Besut Campus, Terengganu, Malaysia; ⁷¹Faculty of Forestry, Universitas Gadjah Mada, Yogyakarta 55281, Indonesia; ⁷²School of Biological Sciences, Universiti Sains Malaysia, 11800 Penang, Malaysia; ⁷³Centre for Marine and Coastal Studies, Universiti Sains Malaysia, 11800 Penang, Malaysia; ⁷⁴CIRCLE, University of York, YO10 5NG, United Kingdom; ⁷⁵Flamingo Land, North Yorkshire YO17 6UX, United Kingdom; ⁷⁶Tropical Forests and People Research Centre, University of the Sunshine Coast, QLD 4556, Australia; ⁷⁷College of African Life Management, Department of Wildlife Management, Moshi, Tanzania; ⁷⁸Museu Paraense Emílio Goeldi, Belém PA, 66040-170, Brazil; ⁷⁹Departamento de Ecología, Recursos Naturales, Facultad de Ciencias, Universidad Nacional Autónoma de México, Ciudad de México, CP. 04510, Mexico; ⁸⁰Center for Biosciences, Federal University of Amazonas, Cidade Universitária, Recife PE, 50670-901, Brazil; ⁸¹Herbario Loja, Universidad Nacional de Loja, Loja EC110103, Ecuador; ⁸²Mission des Forêts d'Afrique Centrale (COMIFAC), BP 3618 Yaoundé, Cameroon; ⁸³Department of Ecology, Institute of Bioscience, University of São Paulo, 05508-900 São Paulo, SP, Brazil; ⁸⁴Programa de Pós-Graduação em Ecologia, Conservação e Manejo da Vida Silvestre (ECMVS), IBAM-Instituto Bem Ambiental, Belo Horizonte-Minas Gerais, 31360-310, Brazil; ⁸⁵Root and Soil Biology Laboratory, Department of Botany, Bharathiar University, Coimbatore 641 046, India; ⁸⁶Laboratorio de Ecología Terrestre, Centro de Investigación y de Estudios Avanzados del Instituto Politécnico Nacional (CINVESTAV), C.P. 927310 Mérida, México; ⁸⁷Department of Biology, Universitas Bangka Belitung (UBB), Kampung Merawang, Kepulauan Bangka Belitung 33172, Indonesia; ⁸⁸Programa de Pós Graduação em Ecologia e Conservação, Universidade do Estado de Mato Grosso-UNEMAT, 78200-000 Cáceres, Mato Grosso, Brazil; ⁸⁹Faculty of Forestry, Universitas Sumatera Utara, Medan 20155, Indonesia; ⁹⁰Department of Biodiversity, Evolution and Ecology of Plants, Biocentre Klein Flottbek, University of Hamburg, D-22609 Hamburg, Germany; ⁹¹Institut Sophia Agrobiotech, 69093 Sophia Antipolis Cedex, France; ⁹²World Resources Institute, Washington, DC 20002; ⁹³Centre for Mountain System Studies, Kunming Institute of Botany, Chinese Academy of Sciences, Kunming 650201, China; ⁹⁴Departamento de Engenharia Florestal, Universidade de Brasília, 70910-900, Brasília, Distrito Federal, Brazil; ⁹⁵Nicholas School of the Environment, Duke University, Durham, NC 27708; ⁹⁶College of Biological Sciences, University of Minnesota, St. Paul, MN 55108; ⁹⁷International Institute of Information Technology, Gachibowli, Hyderabad, Telangana 500032, India; ⁹⁸Signature Trust, Chadapatti, Masinagudi PO Nilgiris, TN 643223, India; ⁹⁹Bureau Waardenburg, 4100 AJ Culemborg, The Netherlands; ¹⁰⁰Programa de Pós-Graduação em Ecologia e Conservação da Biodiversidade, Universidade Estadual de Santa Cruz, Ilhéus, Bahia 45662-900, Brazil; ¹⁰¹Laboratório de Restinga e Floresta Atlântica, Universidade Federal do Espírito Santo, BR-101 São Mateus, Brazil; ¹⁰²Tropical Biodiversity Section, MUSE - Museo delle Scienze, 38122 Trento, Italy; ¹⁰³Cibodas Botanic Gardens, Indonesian Institute of Sciences (LIPI), Cipanas, Cianjur, Jawa 43253, Indonesia; ¹⁰⁴Department of Geography and Geology, University of Turku, Turku, 20014 Turun yliopisto, Finland; ¹⁰⁵School of Environmental and Natural Resource Sciences, Faculty of Science and Technology, Universiti Kebangsaan Malaysia, 43600 UKM Bangi, Selangor, Malaysia; ¹⁰⁶Instituto Federal de Educação, Ciência e Tecnologia do Espírito Santo, São João de Petrópolis, Santa Teresa, 13150-000, Brazil; ¹⁰⁷Department of Evolutionary Biology and Environmental Studies, University of Zurich, CH-8057 Zurich, Switzerland; ¹⁰⁸Departamento de Sistemática e Ecologia, Universidade Federal da Paraíba, 58051-970, Brazil; ¹⁰⁹Remote Sensing Department (DSR), National Institute for Space Research (INPE), São José dos Campos, São Paulo 12227-010, Brazil; ¹¹⁰Institute of Forestry, Animal Health and Comparative Medicine, University of Glasgow, Glasgow G12 8QQ, United Kingdom; ¹¹¹Center for Development Research (ZEF), University of Bonn, 53113 Bonn, Germany; ¹¹²Chair of Nature Conservation and Landscape Ecology, University of Freiburg, 79085 Freiburg im Breisgau, Germany; ¹¹³H.J. Andrews Experimental Forest, Blue River, OR 97411; ¹¹⁴Faculty of Environmental Sciences and Natural Resource Management, Norwegian University of Life Sciences, 1432 Ås, Norway; ¹¹⁵Grad-ES, Campus International de Baillarguet, TA C-105/D 34398 Montpellier Cedex 5, France; ¹¹⁶Departamento de Ecologia, Universidade Federal do Rio Grande do Norte, Natal, CEP 59078-970, Brazil; ¹¹⁷World Wildlife Fund Thailand, Bangkok 10400, Thailand; ¹¹⁸Africa and Madagascar Department, Missouri Botanical Garden, St. Louis, MO 63110; ¹¹⁹Herbarium Federal University of Technology-Paraná, 86812-460, Curitiba, Paraná, PR, Brazil; ¹²⁰Biodiversity Parks Programme, Centre for Environmental Management of Degraded Ecosystems, University of Delhi, Delhi 110007, India; ¹²¹Departamento de Botânica, Cidade Universitária, Universidade Federal de Pernambuco, Recife, CEP, 50670-901, Brazil; ¹²²Key Laboratory of Tropical Plant Resources and Sustainable Use, Xishuangbanna Tropical Botanical Garden, Chinese

Academy of Sciences, Menglun Town, Mengla County, Yunnan Province 666303, China; ⁱⁱⁱⁱⁱⁱDepartment of Plant Sciences, University of Cambridge, Cambridge CB2 3EA, United Kingdom; ^{mmmmmm}Department of Food and Resource Economics, University of Copenhagen, 1165 Copenhagen, Denmark; ⁿⁿⁿⁿⁿⁿⁿDepartment of Biological Sciences, Washington State University, Vancouver, WA 98686; ^{oooooo}Netherlands Food and Consumer Product Safety, Authority, National Reference Centre, 6700HC Wageningen, The Netherlands; ^{pppppp}Research Institute for Sustainable Humanosphere, Kyoto University, Uji, Kyoto 611-0011, Japan; ^{qqqqqqq}Science, Technology and International Cooperation Department, Vietnam National University of Forestry, Hanoi 144, Vietnam; ^{rrrrr}Department of Ecology and Evolutionary Biology, University of Michigan, Ann Arbor, MI 48109; ^{sssss}Department of Geography, University of Bergen, N-5020 Bergen, Norway; ^{ttttt}Department of Forestry and Wood Technology, The Federal University of Technology, P.M.B. 704 Akure, Nigeria; ^{uuuuuu}Arnold Arboretum, Harvard University, Boston, MA 02130; ^{vvvvv}Department of Biological Sciences, National University of Singapore, Singapore 117543, Singapore; ^{wwwwww}Brown University, Providence, RI 02912; ^{xxxxxx}School of Natural Sciences and Psychology, Liverpool John Moores University, Liverpool L3 3AF ⁵⁶ United Kingdom; ^{yyyyyy}Institute for Biodiversity and Ecosystem Dynamics, University of Amsterdam, 1098 Amsterdam, ^{zzzzz} Netherlands; ^{zzzzz} Instituto Politécnico Nacional, CIIDIR-Unidad Oaxaca, Santa Cruz Xoxocotlán, CP 71230, Oaxaca, Mexico; ^{aaaaaa}Department of Floodplain Ecology, Institute of Geography and Geoecology, Karlsruhe Institute of Technology, D-76437 Rastatt, ^{bbbbb} Germany; ^{bbbbb} College of Agriculture and Forestry, Hainan University, Meilan Qu Haikou Shi, 570228, Hainan Province, China; ^{ccccc} Biosciences, Université Félix ⁵⁵ Houphouët-Boigny, Abidjan 22, Ivory Coast; ^{ddddd} Institute of Arts and Sciences, Far Eastern University, Manila, Philippines; and ^{eeeee} Department of Biology, American University of Beirut, Riad El-Solh, Beirut 1107 2020, Lebanon

- Cavender-Bares J, Ackerly DD, Hobbie SE, Townsend PA (2016) Evolutionary legacy effects on ecosystems: Biogeographic origins, plant traits, and implications for management in the era of global change. *Annu Rev Ecol Syst* 47:433–462.
- ⁸⁴ghue MJ (2008) A phylogenetic perspective on the distribution of plant diversity. *Proc Natl Acad Sci USA* 105:11549–11555.
- Weigelt P, et al. (2015) Global patterns and drivers of phylogenetic structure in island floras. *Sci Rep* 5:12213.
- Morley RJ (2003) Interplate dispersal paths for megathermal angiosperms. *Perspect Plant Ecol Evol Syst* 6:5–20.
- Pennington RT, Dick CW (2004) The role of immigrants in the assembly of the South American rainforest tree flora. *Philos Trans R Soc Lond B Biol Sci* 359:1611–1622.
- ⁹⁹WF, et al. (2015) An estimate of the number of tropical tree species. *Proc Natl Acad Sci USA* 112:7472–7477, and correction (2015) 112:E4628–E4629.
- ⁵⁴y AH (1988) Changes in plant community diversity and floristic composition on environmental and geographical gradients. *Ann Mo Bot Gard* 75:1–34.
- Dexter KG, et al. (2015) Floristics and biogeography of vegetation in seasonally dry tropical regions. *Int For Rev* 17:10–22.
- Holt BG, et al. (2013) An update of Wallace's zoogeographic regions of the world. *Science* 339:74–78.
- Webb CO, et al. (2002) Phylogenies and community ecology. *Annu Rev Ecol Syst* 33: 475–505.
- Proches S, Ramdhani S, Perera SJ, Ali JR, Gairola S (2015) Global hotspots in the present-day distribution of ancient animal and plant lineages. *Sci Rep* 5:15457.
- Takhtajan AL (1986) *The Floristic Regions of the World* (Univ of California Press, Berkeley).
- Chang HT (1994) An outline on the regionalisation of the global flora. *Acta Sci Nat Univ Sunyatseni* 33:73–80.
- Cox CB (2001) The biogeographic regions reconsidered. *J Biogeogr* 28:511–523.
- McLoughlin S (2001) The breakup history of Gondwana and its impact on pre-Cenozoic floristic provincialism. *Aust J Bot* 49:271–300.
- McClean CJ, et al. (2005) African plant diversity and climate change. *Ann Mo Bot Gard* 92:139–152.
- Anhuf D, et al. (2006) Paleo-environmental change in Amazonian and African rainforest during the LGM. *Palaeogeogr Palaeoclimatol Palaeoecol* 239:510–527.
- Banda-R K, et al.; DRYFLOR (2016) Plant diversity patterns in neotropical dry forests and their conservation implications. *Science* 353:1383–1387.
- Ratnam J, Tomlinson KW, Rasquinha DN, Sankaran M (2016) Savannahs of Asia: Antiquity, biogeography, and an uncertain future. *Philos Trans R Soc Lond B Biol Sci* 371:20150305.
- Hall R (2001) Cenozoic reconstructions of SE Asia and the SW Pacific: Changing patterns of land and sea. *Faunal and Floral Migrations and Evolution in SE Asia-Australasia*, eds Metcalfe I, Smith JMB, Morwood M, Davidson ID (Swets & Zeitlinger, Lisse, The Netherlands), pp 35–56.
- Klaus S, Morley RJ, Plath M, Zhang YP, Li JT (2016) Biotic interchange between the Indian subcontinent and mainland Asia through time. *Nat Commun* 7:12132.
- Qian H, Jin Y, Ricklefs RE (2017) Phylogenetic diversity anomaly in angiosperms between eastern Asia and eastern North America. *Proc Natl Acad Sci USA* 114: 11452–11457.
- Primack RB, Corlett RT (2005) *Tropical Rainforests: An Ecological and Biogeographical Comparison* (Wiley-Blackwell, Hoboken, NJ).
- Corlett RT, Primack RB (2006) Tropical rainforests and the need for cross-continental comparisons. *Trends Ecol Evol* 21:104–110.
- APG-III (2009) An update of the angiosperm phylogeny group classification for the orders and families of flowering plants: APG III. *Bot J Linn Soc* 161:105–121.
- ⁷G-IV (2016) An update of the angiosperm phylogeny group classification for the orders and families of flowering plants: APG IV. *Bot J Linn Soc* 181:1–20.
- Zanne AE, et al. (2014) Three keys to the radiation of angiosperms into freezing environments. *Nature* 506:89–92.
- Webb CO, Ackerly DD, Kembel SW (2008) Phylocom: Software for the analysis of phylogenetic community structure and trait evolution. *Bioinformatics* 24:2098–2100.
- Magallón S, Gómez-Acevedo S, Sánchez-Reyes LL, Hernández-Hernández T (2015) A metacalibrated time-tree documents the early rise of flowering plant phylogenetic diversity. *New Phytol* 207:437–453.
- Ward JH, Jr (1963) Hierarchical grouping to optimize an objective function. *J Am Stat Assoc* 58:236–244.
- Clopper C, Pearson ES (1934) The use of confidence or fiducial limits illustrated in the case of the binomial. *Biometrika* 26:404–413.
- Hijmans RJ, Cameron SE, Parra JL, Jones PG, Jarvis A (2005) Very high resolution interpolated climate surfaces for global land areas. *Int J Climatol* 25:1965–1978.

25%

SIMILARITY INDEX

PRIMARY SOURCES

- 1** Yize Li, Shuvojit Banerjee, Yuyan Wang, Stephen A. Goldstein et al. "Activation of RNase L is dependent on OAS3 expression during infection with diverse human viruses", *Proceedings of the National Academy of Sciences*, 2016
30 words — 1%
Crossref
- 2** J. W. F. Slik, S.-I. Aiba, M. Bastian, F. Q. Brearley et al. "Soils on exposed Sunda Shelf shaped biogeographic patterns in the equatorial forests of Southeast Asia", *Proceedings of the National Academy of Sciences*, 2011
28 words — 1%
Crossref
- 3** www.biologicals.cz
Internet
27 words — 1%
- 4** Rafael Leandro de Assis, Florian Wittmann, Bruno Garcia Luize, Torbjørn Haugaasen. "Patterns of floristic diversity and composition in floodplain forests across four Southern Amazon river tributaries, Brazil", *Flora*, 2017
26 words — < 1%
Crossref
- 5** Deng, F.. "Identification of functional groups in an old-growth tropical montane rain forest on Hainan Island, China", *Forest Ecology and Management*, 20080405
25 words — < 1%
Crossref
- 6** iopscience.iop.org
Internet
25 words — < 1%
- 7** www.pnas.org
Internet
24 words — < 1%
- 8** Ana I. Bento, Thuy Nguyen, Coady Wing, Felipe Lozano-Rojas,

Yong-Yeol Ahn, Kosali Simon. "Evidence from internet search data shows information-seeking responses to news of local COVID-19 cases", Proceedings of the National Academy of Sciences, 2020

Crossref

23 words — < 1%

9 nau.edu

Internet

22 words — < 1%

10 apjtc.com

Internet

21 words — < 1%

11 Jeffrey J. Gerwing. "A Standard Protocol for Liana Censuses1", Biotropica, 3/2006

Crossref

21 words — < 1%

12 Laurance, William F., Jeffrey Sayer, and Kenneth G. Cassman. "The impact of meat consumption on the tropics: reply to Machovina and Feeley", Trends in Ecology & Evolution, 2014.

Crossref

20 words — < 1%

13 pt.scribd.com

Internet

19 words — < 1%

14 Juliana M. Almeida-Rocha, Carlos A. Peres, Julio A. B. Monsalvo, Leonardo De C. Oliveira. "Habitat determinants of golden-headed lion tamarin () occupancy of cacao agroforests: Gloomy conservation prospects for management intensification ", American Journal of Primatology, 2020

Crossref

19 words — < 1%

15 Hans ter Steege, Sylvia Mota de Oliveira, Nigel C. A. Pitman, Daniel Sabatier et al. "Towards a dynamic list of Amazonian tree species", Scientific Reports, 2019

Crossref

19 words — < 1%

16 C. E. R. Lehmann, T. M. Anderson, M. Sankaran, S. I. Higgins et al. "Savanna Vegetation-Fire-Climate Relationships Differ Among Continents", Science, 2014

Crossref

18 words — < 1%

-
- 17 K.G. Dexter, B. Smart, C. Baldauf, T.R. Baker et al. 18 words — < 1%
"Floristics and biogeography of vegetation in seasonally dry tropical regions", *International Forestry Review*, 2015
[Crossref](#)
-
- 18 Henry H. Mattingly, Mark K. Transtrum, Michael C. Abbott, Benjamin B. Machta. 18 words — < 1%
"Maximizing the information learned from finite data selects a simple model", *Proceedings of the National Academy of Sciences*, 2018
[Crossref](#)
-
- 19 K. Kruesi. "Does a sexually selected trait represent a burden in locomotion?", *Journal of Fish Biology*, 4/2007
[Crossref](#)
-
- 20 Marijn Bauters, Sofie Meeus, Matti Barthel, Piet Stoffelen et al. 17 words — < 1%
"Century-long apparent decrease in intrinsic water-use efficiency with no evidence of progressive nutrient limitation in African tropical forests", *Global Change Biology*, 2020
[Crossref](#)
-
- 21 Caldara Junior, Vilacio, and Yuri L. R. Leite. 16 words — < 1%
"Geographic variation in hairy dwarf porcupines of Coendou from eastern Brazil (Mammalia: Erethizontidae)", *Zoologia (Curitiba)*, 2012.
[Crossref](#)
-
- 22 Marijn Bauters, Sofie Meeus, Matti Barthel, Piet Stoffelen et al. 16 words — < 1%
"Century-long apparent decrease in iWUE with no evidence of progressive nutrient limitation in African tropical forests", *Global Change Biology*, 2020
[Crossref](#)
-
- 23 Barbara Haurez, Nikki Tagg, Charles-Albert Petre, Yves Brostaux, Armand Boubady, Jean-Louis Doucet. "Seed dispersal effectiveness of the western lowland gorilla () in Gabon ", *African Journal of Ecology*, 2018
[Crossref](#)

24 Danielsen, Finn, Per M. Jensen, Neil D. Burgess, Indiana Coronado, Sune Holt, Michael K. Poulsen, Ricardo M. Rueda, Thomas Skielboe, Martin Enghoff, Louise H. Hemmingsen, Marten Sørensen, and Karin Pirhofer-Walzl. "Testing focus groups as a tool for connecting indigenous and local knowledge on abundance of natural resources with science-based land management systems : Connecting knowledge systems", Conservation Letters, 2014.

Crossref

25 R.A. Camargo Lamparelli, F.J. Ponzoni, J. Zullo, G. Queiroz Pellegrino, Y. Arnaud. "Characterization of the salar de uyuni for in-orbit satellite calibration", IEEE Transactions on Geoscience and Remote Sensing, 2003

Crossref

26 Aline Lopes, Aurélia Bentes Ferreira, Pauline Oliveira Pantoja, Pia Parolin, Maria Teresa Fernandez Piedade. "Combined effect of elevated CO2 level and temperature on germination and initial growth of Montrichardia arborescens (L.) Schott (Araceae): a microcosm experiment", Hydrobiologia, 2015

Crossref

27 www.cambridge.org

Internet

28 Timothy E. Moore, Carl D. Schlichting, Matthew E. Aiello-Lammens, Kerri Mocko, Cynthia S. Jones. "Divergent trait and environment relationships among parallel radiations in (Geraniaceae): a role for evolutionary legacy? ", New Phytologist, 2018

Crossref

29 Simone Matias Reis, Beatriz Schwantes Marimon, Ben Hur Marimon Junior, Paulo S. Morandi et al. "Climate and fragmentation affect forest structure at the southern border of Amazonia", Plant Ecology & Diversity, 2018

Crossref

30 Rachunliu G. Kamei, Diego San Mauro, David J. Gower, Ines Van Bocxlaer et al. "Discovery of a new family of amphibians from

northeast India with ancient links to Africa",
Proceedings of the Royal Society B: Biological
Sciences, 2012

Crossref

14 words — < 1%

31 R. Willmann, H. M. Lajunen, G. Erbs, M.-A.
Newman et al. "Arabidopsis lysin-motif proteins
LYM1 LYM3 CERK1 mediate bacterial peptidoglycan sensing and
immunity to bacterial infection", Proceedings of the National
Academy of Sciences, 2011

Crossref

14 words — < 1%

32 bmcbiol.biomedcentral.com

Internet

14 words — < 1%

33 Şerban Procheş, Rahayu S. Sukri, Salwana M.
Jaafar, Erwin J.J. Sieben et al. "Soil niche of rain
forest plant lineages: Implications for dominance on a global
scale", Journal of Biogeography, 2019

Crossref

14 words — < 1%

34 Yu-Long Feng, Yan-Bao Lei, Rui-Fang Wang,
Ragan M. Callaway, Alfonso Valiente-Banuet,
Inderjit, Yang-Ping Li, Yu-Long Zheng. "Evolutionary tradeoffs for
nitrogen allocation to photosynthesis versus cell walls in an
invasive plant", Proceedings of the National Academy of Sciences,
2009

Crossref

13 words — < 1%

35 Christelle F. Gonmadje, Charles Doumenge, Doyle
McKey, Gildas P. M. Tchouto et al. "Tree diversity
and conservation value of Ngovayang's lowland forests,
Cameroon", Biodiversity and Conservation, 2011

Crossref

13 words — < 1%

36 Samir Gonçalves Rolim, Regina Helena Rosa
Sambuichi, Götz Schroth, Marcelo Trindade
Nascimento, José Manoel Lucio Gomes. "Recovery of Forest and
Phylogenetic Structure in Abandoned Cocoa Agroforestry in the
Atlantic Forest of Brazil", Environmental Management, 2016

Crossref

13 words — < 1%

-
- 37 Thangavelu Muthukumar. "Arbuscular mycorrhizal morphology in crops and associated weeds in tropical agro-ecosystems", *Mycoscience*, 05/2009
Crossref 13 words — < 1%
-
- 38 Carla F. Macedo, Ricardo M. Pinto-Coelho. "Diel variations in respiration, excretion rates, and nutritional status of zooplankton from the Pampulha Reservoir, Belo Horizonte, MG", *Journal of Experimental Zoology*, 2000
Crossref 13 words — < 1%
-
- 39 hal.umontpellier.fr
Internet 13 words — < 1%
-
- 40 journals.plos.org
Internet 13 words — < 1%
-
- 41 academic.oup.com
Internet 13 words — < 1%
-
- 42 Christopher B Field, David B. Lobell, Halton A. Peters, Nona R. Chiariello. "Feedbacks of Terrestrial Ecosystems to Climate Change", *Annual Review of Environment and Resources*, 2007
Crossref 13 words — < 1%
-
- 43 Mario Toubes-Rodrigo, Simon J. Cook, David Elliott, Robin Sen. "Quantification of basal ice microbial cell delivery to the glacier margin", Copernicus GmbH, 2016
Crossref Posted Content 13 words — < 1%
-
- 44 A. C. Risch, S. Zimmermann, R. Ochoa-Hueso, M. Schütz et al. "Soil net nitrogen mineralisation across global grasslands", *Nature Communications*, 2019
Crossref 13 words — < 1%
-
- 45 J. L. Sabo, A. Ruhi, G. W. Holtgrieve, V. Elliott, M. E. Arias, Peng Bun Ngor, T. A. Räsänen, So Nam. "Designing river flows to improve food security futures in the Lower Mekong Basin", *Science*, 2017
Crossref 13 words — < 1%

46 Dimitrios Konstantios. "Experiences from the use of a robotic avatar in a museum setting", Proceedings of the 2001 conference on Virtual reality archeology and cultural heritage - VAST 01 VAST 01, 2001 12 words — < 1%
Crossref

47 Decky I. Junaedi, Michael A. McCarthy, Gurutzeta Guillera-Arroita, Jane A. Catford, Mark A. Burgman. "Traits influence detection of exotic plant species in tropical forests", PLOS ONE, 2018 12 words — < 1%
Crossref

48 Chaya Sarathchandra, Gbadamassi G.O. Dossa, Niranjana Bhakta Ranjitkar, Huafang Chen et al. "Effectiveness of protected areas in preventing rubber expansion and deforestation in Xishuangbanna, Southwest China", Land Degradation & Development, 2018 12 words — < 1%
Crossref

49 Giam, Xingli, Renny K. Hadiaty, Heok Hui Tan, Lynne R. Parenti, Daisy Wowor, Sopian Sauri, Kwek Yan Chong, Darren C. J. Yeo, and David S. Wilcove. "Mitigating the impact of oil-palm monoculture on freshwater fishes in Southeast Asia : Conserving Fishes in Oil-Palm Monocultures", Conservation Biology, 2015. 12 words — < 1%
Crossref

50 N R Netto. "Intermittent androgen replacement for intense hypogonadism symptoms in castrated patients", Prostate Cancer and Prostatic Diseases, 03/2006 12 words — < 1%
Crossref

51 Cho, J.. "A study on the relationship between Atlantic sea surface temperature and Amazonian greenness", Ecological Informatics, 201009 12 words — < 1%
Crossref

52 Zerihun Girma, George Chuyong, Paul Evangelista, Yosef Mamo. "Vascular Plant Species Composition, Relative Abundance, Distribution, and Threats in Arsi Mountains National Park, Ethiopia", Mountain Research and Development, 2018 12 words — < 1%

-
- 53 Shijo Joseph, K. Anitha, V. K. Srivastava, Ch. Sudhakar Reddy, A. P. Thomas, M. S. R. Murthy. "Rainfall and Elevation Influence the Local-Scale Distribution of Tree Community in the Southern Region of Western Ghats Biodiversity Hotspot (India)", *International Journal of Forestry Research*, 2012
12 words — < 1%
Crossref
-
- 54 www.edb.ups-tlse.fr
Internet
11 words — < 1%
-
- 55 Z. Dawy, B. Goebel, J. Hagenauer, C. Andreoli, T. Meitinger, J.C. Mueller. "Gene Mapping and Marker Clustering Using Shannon's Mutual Information", *IEEE/ACM Transactions on Computational Biology and Bioinformatics*, 2006
11 words — < 1%
Crossref
-
- 56 Jorge Andres Morandé, Christine M. Stockert, Garrett C. Liles, John N. Williams, David R. Smart, Joshua H. Viers. "From berries to blocks: carbon stock quantification of a California vineyard", *Carbon Balance and Management*, 2017
11 words — < 1%
Crossref
-
- 57 "Caatinga", Springer Science and Business Media LLC, 2017
11 words — < 1%
Crossref
-
- 58 www.tandfonline.com
Internet
11 words — < 1%
-
- 59 Maria das Graças WS Coriolano, Luciana R Belo, Danielle Carneiro, Amdore G Asano et al. "Swallowing in Patients with Parkinson's Disease: A Surface Electromyography Study", *Dysphagia*, 2012
11 words — < 1%
Crossref
-
- 60 N. M. Fyllas, E. Gloor, L. M. Mercado, S. Sitch et al. "Analysing Amazonian forest productivity using a new individual and trait-based model (TFS v.1)", *Geoscientific Model Development Discussions*, 2014
11 words — < 1%

-
- 61 nph.onlinelibrary.wiley.com
Internet 11 words — < 1%
-
- 62 besjournals.onlinelibrary.wiley.com
Internet 11 words — < 1%
-
- 63 Andes Hamuraby Rozak, Hendra Gunawan. "ALTITUDINAL GRADIENT AFFECTS ON TREES AND STAND ATTRIBUTES IN MOUNT CIREMAI NATIONAL PARK, WEST JAVA, INDONESIA", *Jurnal Penelitian Kehutanan Wallacea*, 2015
Crossref 11 words — < 1%
-
- 64 Scheffers, Brett R., Lucas N. Joppa, Stuart L. Pimm, and William F. Laurance. "What we know and don't know about Earth's missing biodiversity", *Trends in Ecology & Evolution*, 2012.
Crossref 10 words — < 1%
-
- 65 www.unccd.int
Internet 10 words — < 1%
-
- 66 linux1.softberry.com
Internet 10 words — < 1%
-
- 67 bioone.org
Internet 10 words — < 1%
-
- 68 www.eneuro.org
Internet 10 words — < 1%
-
- 69 P. S. Khillare, D. K. Banerjee. "Polynuclear aromatic hydrocarbons in the ambient air of Delhi", *International Journal of Environmental Studies*, 2007
Crossref 10 words — < 1%
-
- 70 Dyana Ndiade-Bourobou, Kasso Dainou, Olivier J. Hardy, Charles Doumenge, Félicien Tosso, Jean-Marc Bouvet. "Revisiting the North-South genetic discontinuity in

Central African tree populations: the case of the low-density tree species *Baillonella toxisperma*", Tree Genetics & Genomes, 2020

Crossref

71 Gobbeler, K.. "Out of Antarctica? New insights into the phylogeny and biogeography of the Pleurobranchomorpha (Mollusca, Gastropoda)", Molecular Phylogenetics and Evolution, 201006

Crossref

72 Julia L. A. Knapp, Colin Neal, Alessandro Schlumpf, Margaret Neal, James W. Kirchner. "New water fractions and transit time distributions at Plynlimon, Wales, estimated from stable water isotopes in precipitation and streamflow", Copernicus GmbH, 2019

Crossref Posted Content

73 complete.bioone.org

Internet

74 Raes, Leander, Marijke D'Haese, Nikolay Aguirre, and Thomas Knoke. "A portfolio analysis of incentive programmes for conservation, restoration and timber plantations in Southern Ecuador", Land Use Policy, 2016.

Crossref

75 Onrizal, A G Ahmad, M Mansor. "Assessment of Natural Regeneration of Mangrove Species at Tsunami Affected Areas in Indonesia and Malaysia", IOP Conference Series: Materials Science and Engineering, 2017

Crossref

76 Luz Boyero, Richard G. Pearson, Cang Hui, Mark O. Gessner et al. "Biotic and abiotic variables influencing plant litter breakdown in streams: a global study", Proceedings of the Royal Society B: Biological Sciences, 2016

Crossref

77 www.suffolkbio.com

Internet

78 S. Tharanga Aluthwattha, Rhett D. Harrison, Kithsiri B. Ranawana, Cheng Xu, Ren Lai, Jin Chen. "Does

spatial variation in predation pressure modulate selection for
aposematism?", Ecology and Evolution, 2017

Crossref

79 Jin, Xu, Jorma Zimmermann, Andrea Polle, and Urs Fischer. "Auxin is a long-range signal that acts independently of ethylene signaling on leaf abscission in Populus", Frontiers in Plant Science, 2015.

Crossref

80 Georg Zizka. "Chilean Bromeliaceae: diversity, distribution and evaluation of conservation status", Biodiversity and Conservation, 03/10/2009

Crossref

81 science.sciencemag.org

Internet

82 Martin Freiberg, Marten Winter, Alessandro Gentile, Alexander Zizka et al. "The Leipzig Catalogue of Vascular Plants (LCVP) – An improved taxonomic reference list for all known vascular plants", Cold Spring Harbor Laboratory, 2020

Crossref Posted Content

83 Thomas, Daniel C., Lars W. Chatrou, Gregory W. Stull, David M. Johnson, David J. Harris, U-sa Thongparoj, and Richard M.K. Saunders. "The historical origins of palaeotropical intercontinental disjunctions in the pantropical flowering plant family Annonaceae", Perspectives in Plant Ecology Evolution and Systematics, 2015.

Crossref

84 pure.royalholloway.ac.uk

Internet

85 Poorter, Lourens, Frans Bongers, T. Mitchell Aide, Angélica M. Almeyda Zambrano, Patricia Balvanera, Justin M. Becknell, Vanessa Boukili, Pedro H. S. Brancalion, Eben N. Broadbent, Robin L. Chazdon, Dylan Craven, Jarcilene S. de Almeida-Cortez, George A. L. Cabral, Ben H. J. de Jong, Julie S. Denslow, Daisy H. Dent, Saara J. DeWalt, Juan M. Dupuy, Sandra M. Durán, Mario M. Espírito-Santo, María C. Fandino, Ricardo G.

César, Jefferson S. Hall, José Luis Hernandez-Stefanoni, Catarina C. Jakovac, André B. Junqueira, Deborah Kennard, Susan G. Letcher, Juan-Carlos Licona, Madelon Lohbeck, Erika Marín-Spiotta, Miguel Martínez-Ramos, Paulo Massoca, Jorge A. Meave, Rita Mesquita, Francisco Mora, Rodrigo Muñoz, Robert Muscarella, Yule R. F. Nunes, Susana Ochoa-Gaona, Alexandre A. de Oliveira, Edith Orihuela-Belmonte, Marielos Peña-Claros, Eduardo A. Pérez-García, Daniel Piotto, Jennifer S. Powers, Jorge Rodríguez-Velázquez, I. Eunice Romero-Pérez, Jorge Ruíz, Juan G. Saldarriaga et al. "Biomass resilience of Neotropical secondary forests", *Nature*, 2016.

Crossref

86 onlinelibrary.wiley.com 8 words — < 1%
Internet

87 Cecília G. Leal, Paulo S. Pompeu, Toby A. Gardner, Rafael P. Leitão et al. "Multi-scale assessment of human-induced changes to Amazonian instream habitats", *Landscape Ecology*, 2016 8 words — < 1%
Crossref

88 Fernando A. O. Silveira, André J. Arruda, William Bond, Giselda Durigan et al. "Myth-busting tropical grassy biome restoration", *Restoration Ecology*, 2020 8 words — < 1%
Crossref

89 Michael Kessler, Dirk Nikolaus Karger, Jürgen Kluge. "Elevational diversity patterns as an example for evolutionary and ecological dynamics in ferns and lycophytes", *Journal of Systematics and Evolution*, 2016 8 words — < 1%
Crossref

90 msbmb.org 8 words — < 1%
Internet

91 www.sabonet.org.za 8 words — < 1%
Internet

92 Hans ter Steege, Terry W. Henkel, Nora Helal, Beatriz S. Marimon et al. "Rarity of monodominance in hyperdiverse Amazonian forests", *Scientific* 8 words — < 1%

93 Sebastián González-Caro, Álvaro Duque, Kenneth J. Feeley, Edersson Cabrera et al. "The legacy of biogeographic history on the composition and structure of Andean forests", Ecology, 2020

8 words — < 1%

Crossref

94 Zach J. Farris, Brian D. Gerber, Kim Valenta, Radoniaina Rafaliarison et al. "Threats to a rainforest carnivore community: A multi-year assessment of occupancy and co-occurrence in Madagascar", Biological Conservation, 2017

8 words — < 1%

Crossref

95 Christine Driller, Stefan Merker, Dyah Perwitasari-Farajallah, Walberto Sinaga, Novita Anggraeni, Hans Zischler. "Stop and Go – Waves of Tarsier Dispersal Mirror the Genesis of Sulawesi Island", PLOS ONE, 2015

8 words — < 1%

Crossref

96 Patrick Weigelt, W. Daniel Kissling, Yael Kisel, Susanne A. Fritz et al. "Global patterns and drivers of phylogenetic structure in island floras", Scientific Reports, 2015

8 words — < 1%

Crossref

97 J. W. Ferry Slik, Floris C. Breman, Caroline Bernard, Marloes van Beek, Charles H. Cannon, Karl A. O. Eichhorn, Kade Sidiyasa. "Fire as a selective force in a Bornean tropical everwet forest", Oecologia, 2010

8 words — < 1%

Crossref

98 ccb.ucr.edu

Internet

8 words — < 1%

99 Derroire, Géraldine, Patricia Balvanera, Carolina Castellanos-Castro, Guillaume Decocq, Deborah K. Kennard, Edwin Lebrija-Trejos, Jorge A. Leiva, Per-Christer Odén, Jennifer S. Powers, Victor Rico-Gray, Muluaalem Tigabu, and John R. Healey. "Resilience of tropical dry forests - a meta-analysis of changes in species diversity and composition during secondary succession", Oikos, 2016.

7 words — < 1%

Crossref

100 Norhashidah Hj Mohd. Ali, Abdul Rahman Abdullah. "New rotated iterative algorithms for the solution of a coupled system of elliptic equations", International Journal of Computer Mathematics, 1999 7 words — < 1%
Crossref

101 "Abstract", Journal of Ornithology, 2006 7 words — < 1%
Crossref

102 Wood, Jamie R., Ian A. Dickie, Holly V. Moeller, Duane A. Peltzer, Karen I. Bonner, Gaye Rattray, and Janet M. Wilmshurst. "Novel interactions between non-native mammals and fungi facilitate establishment of invasive pines", Journal of Ecology, 2014. 7 words — < 1%
Crossref

103 Fung-Chang Sung. "Climate Warming and Cardiovascular Mortality in 2040–2050 in Taiwan :", Epidemiology, 01/2011 6 words — < 1%
Crossref

104 Corlett, R.T.. "Tropical rainforests and the need for cross-continental comparisons", Trends in Ecology & Evolution, 200602 6 words — < 1%
Crossref

EXCLUDE QUOTES ON
EXCLUDE BIBLIOGRAPHY ON

EXCLUDE MATCHES OFF