

Mine Closure 2011

Proceedings of the Sixth International Conference on Mine Closure
18–21 September 2011 | Alberta | Canada

Volume 1

Mine Site Reclamation



EDITORS ANDY FOURIE | MARK TIBBETT | ANIL BEERSING

COLLABORATING ORGANISATION

Cranfield
UNIVERSITY

Mine Closure 2011

Proceedings of the Sixth International Conference on Mine Closure

18 – 21 September 2011, Lake Louise, Alberta, Canada

Volume 1 Mine Site Reclamation

Editors

Andy Fourie

School of Civil and Resource Engineering
The University of Western Australia, Australia

Mark Tibbett

Cranfield University, United Kingdom

Anil Beersing

Golder Associates Ltd., Canada



CSIRO | Curtin University | University of WA
Joint Venture

Copyright

© Copyright 2011. Australian Centre for Geomechanics, The University of Western Australia. All rights reserved. No part of this publication may be reproduced, stored or transmitted in any form without the prior permission of the Australian Centre for Geomechanics, The University of Western Australia.

Disclaimer

The information contained in this publication is for general educational and informative purposes only. Except to the extent required by law, the Australian Centre for Geomechanics, The University of Western Australia make no representations or warranties express or implied as to the accuracy, reliability or completeness of the information stored therein. To the extent permitted by law, the Australian Centre for Geomechanics, The University of Western Australia exclude all liability for loss or damage of any kind at all (including indirect or consequential loss or damage) arising from the information in this publication or use of such information. You acknowledge that the information provided in this publication is to assist you with undertaking your own enquiries and analyses and that you should seek independent professional advice before acting in reliance on the information contained therein. While all care has been taken in presenting this information herein, no liability is accepted for errors or omissions. The views expressed in this publication are those of the authors and may not necessarily reflect those of the Australian Centre for Geomechanics, The University of Western Australia.

The papers contained in this publication are for general information only, and readers are cautioned to take expert advice on mine closure.

Cover photograph courtesy of Sherritt Coal, Canada.

Production team: Belinda Doley, Christine Neskudla, Josephine Ruddle and Matylda Thomas, Australian Centre for Geomechanics. Catherine Puchalski and Sheri Watt, Golder Associates Ltd.

ISBN 978-0-9870937-1-4



**CSIRO | Curtin University | University of WA
Joint Venture**

Australian Centre for Geomechanics

PO Box 3296 – Broadway

Nedlands

WESTERN AUSTRALIA

AUSTRALIA 6009

Telephone: +61 8 6488 3300

Facsimile: +61 8 6488 1130

acg@acg.uwa.edu.au

www.acg.uwa.edu.au

ABN 37 882 817 280

Organising and Advisory Committees

Steering Committee

Chair

Les Sawatsky *Golder Associates Ltd., Canada*

Members

Dave Sego *University of Alberta, Canada*

Dirk van Zyl *University of British Columbia, Canada*

Ward Wilson *University of Alberta, Canada*

Advisory Committee

Michel Filion *Teck Resources, Canada*

Brent Hartley *Total E&P Canada, Canada*

Dave Hiller *AREVA Resources Canada, Canada*

Ron Lewko *Synchrude Canada Ltd., Canada*

Darrell Martindale *Shell Canada Energy, Canada*

Stuart Nadeau *Imperial Oil Ltd, Kearl Oil Sands Project, Canada*

Anne Naeth *University of Alberta, Canada*

Catherine Puchalski *Golder Associates Ltd., Canada*

Tony Schori *Golder Associates Ltd., Canada*

Sheri Watt *Golder Associates Ltd., Canada*

Patrick Sean Wells *Suncor Energy Inc., Canada*

Editorial Committee

Chair

Anil Beersing *Golder Associates Ltd., Canada*

Members

Angela Beattie *Grande Cache Coal Corporation, Canada*

Ken Bocking *Golder Associates Ltd., Canada*

Helen Butler *BHP Billiton Canada Inc., Canada*

Andy Fourie *The University of Western Australia, Australia*

Ron Jones *Teck Resources, Canada*

Mark Tibbett *Cranfield University, United Kingdom*

Programme Committee

Chair

Murray Fitch *Golder Associates Ltd., Canada*

Members

Bruce Anderson *Suncor Energy Inc., Canada*

Linda Jones *Canadian Land Reclamation Association (CLRA), Canada*

Chris Powter *Oil Sands Research and Information Network (OSRIN), Canada*

Sue Robinson *Golder Associates Inc., USA*

Technical Reviewers

The dedicated efforts of the peer reviewers have resulted in the high quality of the technical programme and the papers compiled for this publication. The editors thank the following people who contributed their time and expertise as reviewers of manuscripts for the Sixth International Conference on Mine Closure held in Canada. A technical and critical review of each paper was undertaken by a minimum of two reviewers for the production of this volume.

Eduardo Arellano

Pontificia Universidad Catolica, Chile

Thomas Baumgartl

The University of Queensland, Australia

Angela Beattie

Grande Cache Coal Corp., Canada

Dennis Becker

Golder Associates Ltd., Canada

Anil Beersing

Golder Associates Ltd., Canada

Michael Bender

Golder Associates Ltd., Canada

Gary Bentel

Independent consultant, Australia

Bill Biggs

Biggs and Associates, Australia

Ken Bocking

Golder Associates Ltd., Canada

Jim Burger

Virginia Tech University, USA

Duncan Cameron

Anglo American, South Africa

Daniel Campbell

Laurentian University; and MIRARCO, Canada

Graeme Campbell

Graeme Campbell and Associates Pty Ltd, Australia

Jim Cassie

BGC Engineering, Canada

Nick Coppin

Wardell Armstrong International Ltd, UK

Anita Diaz

Bournemouth University, UK

Caroline Digby

Post-Mining Alliance, UK

Peter Dye

University of the Witwatersrand, South Africa

Sonia Finucane

Bioscope Environmental Consulting Pty Ltd,
Australia

Andy Fourie

The University of Western Australia, Australia

Andrew Garvie

SRK Consulting (Australasia) Pty Ltd., Australia

Suman George

School of Earth and Environment, The University
of Western Australia, Australia

Iain Green

The Centre for Ecology and Conservation Biology,
Bournemouth University, UK

John Gulley

Golder Associates Ltd., Canada

Rory Haymont

Newmont Asia Pacific, Australia

David Jasper

Outback Ecology, Australia

Hugh Jones

Golder Associates Pty Ltd, Australia

Ron Jones

Teck Resources, Canada

Richard Jewell

Australian Centre for Geomechanics, Australia

Margarete Kalin

Boojum Research Ltd, Canada

Michael Katz

Australia

John Koch

Alcoa of Australia, Australia

Walter Kuit

Teck Resources, Canada

Harley Lacy

Outback Ecology, Australia

Xanti Larranaga

Edith Cowan University, Australia

Ron Lewko
Synchrude Canada Ltd., Canada

Claire Linklater
SRK Consulting (Australasia) Pty Ltd, Australia

Bill Liu
Transcanada Pipelines Ltd., Canada

Clint McCullough
Edith Cowan University, Australia

Gordon McPhail
Metago Environmental Engineers, Australia

Bernd Martens
Grande Cache Coal Corp., Canada

Gavin Mudd
Environmental Engineering, Monash University

Ritva Muhlbauer
BHP Billiton Energy Coal, South Africa

David Mulligan
The University of Queensland, Australia

Michael O’Kane
O’Kane Consultants, Canada

Cindy Ong
CSIRO Earth Science and Resource Engineering,
Australia

Mark Phillip
O’Kane Consultants USA, Inc., USA

Ian Phillips
Alcoa of Australia, Australia

Caius Priscu
AMEC Earth and Environmental, Canada

Doina Priscu
Manitoba Innovation, Energy and Mines, Canada

Thierry Regnier
Tshwane University of Technology, South Africa

Jane Rickson
Cranfield University, UK

Mark Robins
AngloGold Ashanti Ltd, South Africa

Martin Schultze
UFZ Helmholtz-Centre for Environmental Research,
Germany

Howard Smith
Northern Land Council, Australia

Clint Smyth
Summit Environmental, Canada

Alister Spain
The University of Western Australia, Australia

Malcolm Sutton
AngloGold Ashanti Ltd, South Africa

Mark Tibbett
Department of Environmental Science and
Technology, Cranfield University, UK

David Tongway
CSIRO Ecosystems Services, Australia

Gilles Tremblay
Natural Resources Canada, Canada

Bryan Ulrich
Knight Piésold and Co., USA

Björn Weeks
Golder Associates SA, Chile

Patrick Sean Wells
Suncor Energy, Canada

Barbara Wernick
Golder Associates Ltd., Canada

Pete Whitbread-Aburutat
Wardell Armstrong International Ltd; and Eden
Project, UK

Ben White
School of Agricultural and Resource Economics,
The University of Western Australia, Australia

Jacques Wiertz
University of Chile, Chile

Alan Wright
Metago Environmental Engineers, Australia

David Williams
School of Civil Engineering, The University of
Queensland, Australia

John Yeates
Magellan Metals, Canada

Ashley Scott
Northern Ontario School of Medicine and Laurentian
University, Canada

Mel Zwierink
Golder Associates Ltd., Canada

Table of Contents — Volume 1

Australian Centre for Geomechanics	iii
Organising and Advisory Committees	v
Technical Reviewers	vii
Foreword	ix
Preface	xi
Sponsors	xiii

Vegetation Establishment for Closure

Assessment of reclamation status and identification of water stress using airborne remote sensing	3
<i>M. Martínez de S. Álvarez, L. Brown, G. Borstad, P. Martell, J. Dickson, M. Freberg</i>	
Reference conditions for rehabilitating mine stockpiles as novel upland ecosystems in Canada's subarctic	11
<i>K.L. Garrah, D. Campbell</i>	
Enhanced revegetation and reclamation of oil sands disturbed sites using actinorhizal and mycorrhizal biotechnology	19
<i>C.W. Greer, N. Onwuchekwa, J. Zwiazek, A. Quoreshi, S. Roy, K.F. Salifu, D.P. Khasa</i>	
Comparative inventory of vegetation and soils surrounding Teck Coal Ltd.'s coal mountain operations – 2010	27
<i>M.E. Keefer, A.D. Kennedy, R. Moody, P. Gibeau</i>	
The effect of cover crop species on growth and yield response of tree seedlings to fertiliser and soil moisture on reclaimed sites	37
<i>A.A. Kimaro, K.F. Salifu</i>	
Thirty years of revegetation experience at the Key Lake uranium mine in northern Saskatchewan	47
<i>P. Landine, D. Fenske, R. Van Stone</i>	
Soil capping and vegetation trials on waste rock at Cameco Key Lake uranium mine	57
<i>L.A. Leskiw, C. Qualizza, J.D. Zettl, S.L. Barbour</i>	
Evaluation of reclamation success in Alberta's oil sands	65
<i>L.L. May, C. Warner, C.A. Acton, K.F. Salifu, H.B. Anderson, W.S. Tedder</i>	
Can anatomical and physiological characters predict plant adaptation on tin-mined land in Bangka Island?	75
<i>E. Nurtjahya, Robika, Dorly</i>	
Trichoderma harzianum as a tool for reaching suitable growth and vegetation cover on mine tailings	85
<i>T.C. Regnier, N.S. Mokgalaka, O. Memel, M.D. Laing</i>	
Revegetation of post-mined land using directly planted native and local shrub species	93
<i>D.D. MacKenzie, K.N. Renkema</i>	
Assessing re-establishment of functional forest ecosystems on reclaimed oil sands mine lands	101
<i>J. Straker, G. Donald</i>	
The mine that almost closed – a review of fifteen years of reclamation at the Kitsault Mine, Alice Arm, Canada	111
<i>N. Tashe, L. Borges</i>	

Can anatomical and physiological characters predict plant adaptation on tin-mined land in Bangka Island?

E. Nurtjahya Universitas Bangka Belitung, Indonesia

Robika Universitas Bangka Belitung, Indonesia

Dorly Institut Pertanian Bogor, Indonesia

Abstract

*In the last decade, a handful of local tree species were planted on the tin-mined land in Bangka Island to support biodiversity and to meet the economical need of the local people in post tin-mining era. Exotic species have been used predominantly since revegetation was mandatory in Bangka Belitung islands in 1992. Some leaf anatomical and root physiological characters of five year saplings of ubak (*Syzygium grande*), penaga (*Calophyllum inophyllum*), and leban planted in unmined land and tin-mined land were studied to enrich local tree selection. Stomatal density, epidermal cells thickness, cuticle thickness, palisade and spongy mesophyll thickness, root conductivity and root conductivity ratio, chlorophyll and nitrogen contents, and plant height, stem diameter and canopy area of those species were measured. Based on the anatomical and physiological measurements, the best adapted species was *V. pinnata*, followed by *C. inophyllum* and then *S. grande*. Morphological measurements, however, show that the best performance was *S. grande*, *C. inophyllum* and *V. pinnata*. Further study is required to validate this result by assessing the transpiration rate of those species that are grown on mined and unmined lands and by measuring the free proline concentration.*

1 Introduction

Bangka is the largest tin producing island in Indonesia, contributing 40% of the world's demand for tin (ASTIRA, 2005). Tin-mining leaves behind disturbed land, ex tin-mining ponds, and damages natural drainage and habitats. The total area of mine-impacted lands, including other marginal lands in the province is 1,642 ha (Metro Bangka Belitung, 2008); or even more than 5,000 ha if this includes the illegally re-mined area in the revegetated area (Nurtjahya, 2008), and in pepper and rubber plantation (Nurtjahya et al., 2008a).

Sand tin tailings may have 95% sand, C-organics less than 2%, cation exchange capacity less than 1.0. Its soil temperature may reach 45°C (Nurtjahya et al., 2008b), and its phosphate solubilising bacteria and arbuscular mycorrhizal fungi readings were reported as low (Nurtjahya et al., 2009).

Revegetation on tin-mined land showed that higher planting density and top soil addition gave the highest survival rate as the higher density might supply more organic matter, as well as supporting more suitable soil and air temperature, and soil humidity. Highest planting density also gave highest cover and litter production was significantly influenced by legume cover crops (Nurtjahya et al., 2008c). The higher tendency of some soil fauna population at higher plant density may be due to the improved microclimate, especially humidity (Nurtjahya, 2008). The Collembolan population significantly increased along with the age of revegetated tin-mined land using *Acacia mangium* Willd. (Fabaceae) (Nurtjahya et al., 2007).

Reliance on natural succession to restore sand tin tailings without any human aid can be very slow (Mitchell, 1959; Nurtjahya et al., 2009). A number of exotic species have been widely used in rehabilitation programs since 1992 but ecological caution suggests that it is unwise to continue to rely on such a limited species mix for all future rehabilitation efforts (Lamb and Tomlinson, 1994), as they may inhibit natural re-colonisation. Therefore, the use of exotic species is gradually being left behind. On the other hand, the use of local species has not been maximally developed to revegetate tin-mined lands in Bangka Island.

Selection of native tree species has been guided by information from natural succession on tin-mined land observation (Nurtjahya et al., 2009), morphological performance of some local tree species planted on

tin-mined sites (Nurtjahya et al., 2008b), vegetation types (Roemantyo et al., 2004), xerophytic species (Khemnark and Sahunalu, 1988) and by lists of plant invaders in revegetated tin-mined land (Setiawan, 2003; Latifah, 2000). As revegetation should support biodiversity and meet the economical need of local people in the post tin-mining era, local tree species selection becomes more important. The study of anatomical and physiological characters is therefore needed. Five year saplings of three native tree species, i.e. ubak (*Syzygium grande* (Wight) Walp. – Myrtaceae), penaga (*Calophyllum inophyllum* L. – Clusiaceae), and leban (*Vitex pinnata* L. – Verbenaceae) were planted in tin-mined and unmined land, but can their anatomical and physiological characters predict plant adaptation on mined land?

2 Methodology

2.1 Study site

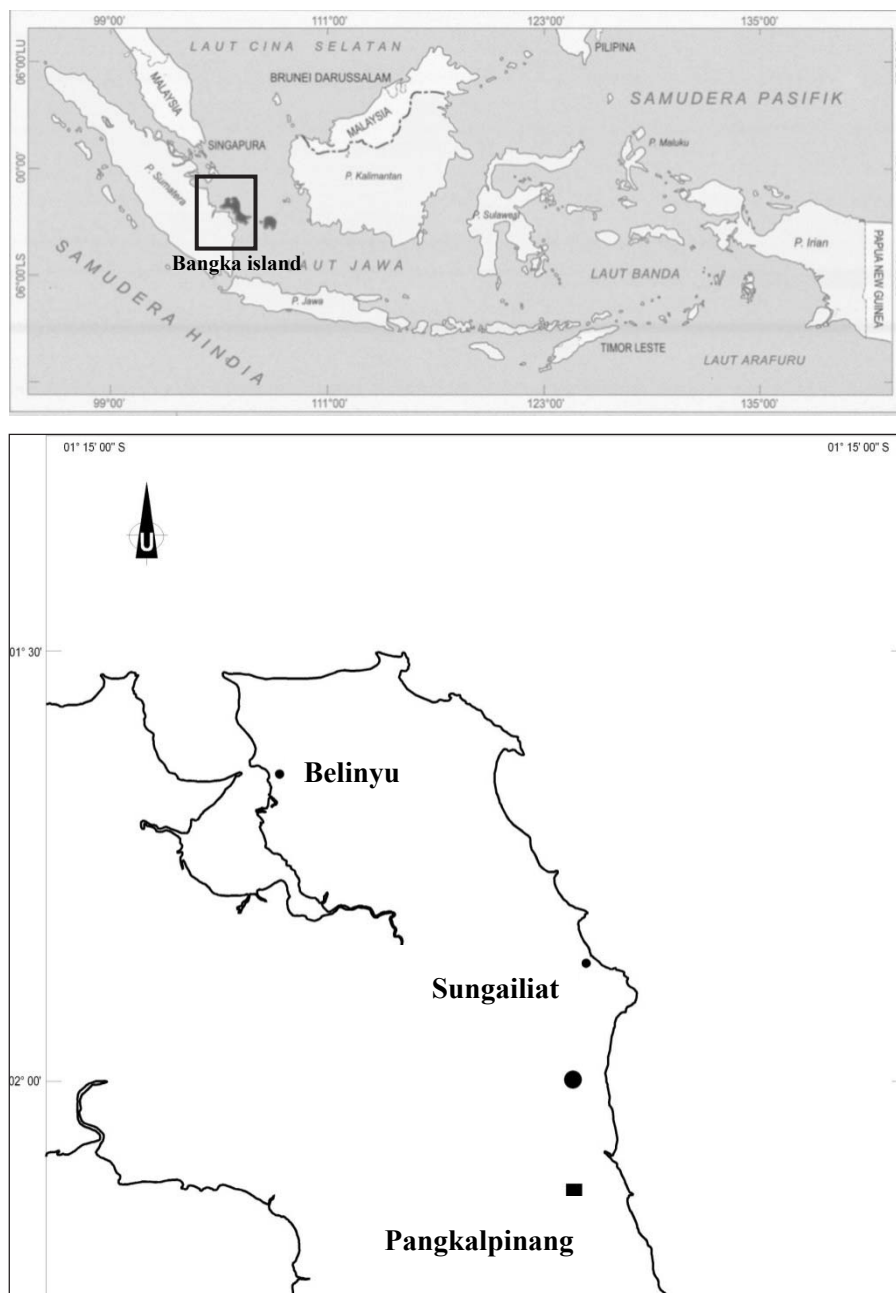


Figure 1 Study site (●) in the north east of Bangka Island

The two hectare revegetated tin-mined land located at Riding Panjang, Bangka Island, Indonesia (lat. 01°59'53.46"S; long. 106°06'45.32"E; 30 m asl.) and 0.02 ha unmined land (lat. 01°51'49.0"S; long. 106°07'09.5"E; 30 m asl.) were selected for the trial (Figure 1). Mean annual rainfall (1996–2005) was 2,408 mm, and temperature ranges were from 23.8–31.5°C with an average of 26.8°C (Pangkalpinang Meteorology Station, 2006).

2.2 Plant tissue sampling

Leaf and root samples of five-year old saplings of ubak (*Syzygium grande* (Wight) Walp. – Myrtaceae), penaga (*Calophyllum inophyllum* L. – Clusiaceae), and leban (*Vitex pinnata* L. – Verbenaceae) were collected from mined and unmined sites. Leaf samples of each species were collected from three branches of the three trees. For paradermal cut preparation, one leaf from the fourth position from apex was taken and fixed with 70% alcohol. For transversal cut preparation, one leaf from the third position from apex was taken and cut 10 x 10 mm and fixed in a FAA solution (5:5:90 of formaldehyde, asetic acid glacial, and 70% alcohol), in plastic bottle for two days. Primary root tip samples were transversally cut \pm 0.5 cm. Root samples were collected from three individuals, each species as a repetition. Those samples were put in plastic bottles, and fixed in FAA solution for four days.

2.3 Plant tissue preparation

The paradermal cut was prepared in a semi-permanent slide and coloured with 1% safranin according to the wholemount method by Sass (1951) through the following steps: fixation in 70% alcohol, washed and soaked in aquadest, softened with 30% HNO₃ solution for 24 hours, washed with aquadest, sliced with a knife, chlorophyll extraction with chlorine solution in for a few minutes and then washed with aquadest, coloured with 1% safranin for 3–5 minutes, and finally covered with cover glass with 10% glycerine.

The transversal cut was prepared according to the paraffin method by Johansen (1940), using a series of Johansen tertiary butyl alcohol (TBA) solution as dehydrant through the following steps: fixation in FAA solution for four days, washed with 70% alcohol for 30 minutes (twice) and then kept in 70% alcohol for further process, dehydrated and cleared in 50% alcohol for one hour (twice), and then soaked in a series of Johansen I – VII solution, infiltrated with TBA solution and paraffin and frozen paraffin for 1–4 hours at room temperature, and then put in the oven at 58°C for 12 hours and changed the paraffin three times every six hours the next morning, and finally kept in the oven at 58°C. The material was softened by soaking in a Gifford solution for one week, and sliced with a rotary microtome at 9 μ m, then coloured with 2% safranin in water and 0.5% fast green in 95% alcohol, and finally covered with entellan media and covered with cover glass.

Chlorophyll analysis was conducted according to spectroscopy (Sims and Gamon, 2002) and the absorbance was measured with 652 nm. Nitrogen content was analysed with Kjehdal method.

2.4 Plant growth

Plant height, stem diameter at diameter at breast height (dbh) and the canopy area of five-year old *S. grande*, *C. inophyllum*, and *V. pinnata* saplings grown on mined and unmined sites were measured. Four individuals per species were randomly selected. Stem and canopy diameter were measured twice: the longest and the shortest ones.

2.5 Data collection and analysis

A student test was run to compare every variable measured from plants grown in mined and unmined sites. Leaf anatomy variables, i.e. stomatal density, stomatal length and width, leaf thickness, palisade thickness, spongy thickness, epidermal thickness, cuticle thickness, and leaf tissue ratio (palisade thickness divided by leaf thickness) were measured. Root conductivity is the total area of xylem bundles, and the root conductivity ratio is the root conductivity divided by cross-section of root area.

3 Results

3.1 Leaf anatomical structure

Ubak leaf (*S. grande*) and penaga leaf (*C. inophyllum*) have hypostomatic type or are abaxial, whereas leban leaf (*V. pinnata*) has anisostomatic type stomata. The stomatal density of each three species was not significantly different between mined and unmined ones, but stomatal densities on mined sites were greater than those on unmined sites, and the stomatal density of *V. pinnata* leaf grown on mined site (592.66 mm⁻²) was double than that on an unmined site (290.98 mm⁻²) (Table 1) (Figure 2a).

The leaf thickness of the *S. grande* and *C. inophyllum* leaves were not significantly different between mined and unmined ones, but that of the *V. pinnata* leaf on mined sites was greater and significantly different from that of unmined sites. Palisade thickness of the *S. grande* leaf was not significantly different between mined and unmined ones, but those of the *C. inophyllum* and *V. pinnata* leaves on mined sites were greater and significantly different from those on unmined sites. The spongy tissue thickness of *S. grande* and *C. inophyllum* leaves were not significantly different between mined and unmined ones, but that of *V. pinnata* leaf on mined sites was greater and significantly different from that of unmined sites (Figure 2b).

The upper epidermal thickness of each three species was not significantly different between mined and unmined ones, but the epidermal thickness of *C. inophyllum* and *V. pinnata* leaves on mined sites were greater than those on unmined sites. The lower epidermal thickness of *S. grande* grown on mined site was bigger and significantly different from those on unmined site, whereas those *C. inophyllum* and *V. pinnata* leaves were not significantly different.

Both upper and lower cuticle thickness of each three species grown on mined sites were greater than those grown on unmined site. Only the upper cuticle of *C. inophyllum* showed significant difference between the mined and unmined sites.

Table 1 Stomatal density, leaf thickness, palisade thickness, spongy tissue thickness, epidermal thickness, and cuticle thickness of five-year old *S. grande*, *C. inophyllum*, and *V. pinnata* saplings grown on tin-mined and unmined sites

	Unit	<i>S. grande</i>		<i>C. inophyllum</i>		<i>V. pinnata</i>	
		Mined	Unmined	Mined	Unmined	Mined	Unmined
Stomatal density	mm ⁻²	583.96	505.03	302.62	298.87	592.66	290.98
Leaf thickness	µm	397.78	373.33	305.83	266.67	166.04 *	111.18
Palisade thickness	µm	134.93	115.14	70.07 *	50.28	76.04 *	44.72
Spongy tissue thickness	µm	306.39	270.56	237.29	180.49	58.68 *	42.08
Upper epidermal thickness	µm	11.76	12.22	17.78	17.68	15.49	12.29
Lower epidermal thickness	µm	9.65 *	8.26	15.35	15.42	8.94	8.75
Upper cuticle thickness	µm	5.83	5.31	4.44 *	3.61	3.25	2.08
Lower cuticle thickness	µm	4.25	3.85	2.39	1.92	2.25	2.03

Asterix (*) indicates that means was significantly different between treatments (0.05)

The increase of stomatal density on mined sites compared to those on unmined sites was also observed for *Trema orientalis* and *Commersonia bartramia* on tin-mined site (Juairiah et al., 2005). These findings are similar to Willmer's (1983) in that the plants grown in dry areas that have abundant sunlight have bigger stomatal density compared to those in humid and sheltered conditions (Heckenberger et al., 1998; Willmer, 1983; Sutcliffe, 1979). The increase of stomatal density is to compensate for the decrease of leaf area of those plants that the need to reduce transpiration because of water stress (Sutcliffe, 1979). Besides, water stress reduces stomatal development as the condition hampers the differentiation of guard cells (Ciha and Brun, 1975). Similar findings are also reported in some soybean (*Glycine max*) genotypes (Poejiastuti, 1994), *Vinca rosea* (Sukarman et al., 2000), and *Lotus creticus* (Banon et al., 2004). On the other hand, the stomatal

density of plants which have stomatal density on a mined site lower or similar to those on undisturbed site show their adaptation to water stress (Poejiastuti, 1994; Dobrenz et al., 1969).

The thicker palisade cells of plants grown on water stress environment might show their tolerance to water stress (Poejiastuti, 1994). Palisade cells enlarged their cells in a water stress environment (Poejiastuti, 1994) and the chloroplast increase of those in a water stress environment might take place in enlarged palisade cells.

In higher light intensity, palisade cells are longer and have more than two layers (Salisbury and Ross, 1995; Taiz and Zeiger, 2002). Shields (1950) mentioned that palisade thickness relates to a leaf's greater tolerance to water stress. Leaves exposed to full sunlight are relatively thicker and have more layers at the mesophyll zone (Dickison, 2000). The internal leaf changes may relate to photosynthesis efficiency. A thicker cuticle supports the plant from water stress (Imaningsih, 2006). Thicker leaf indicates xerophytes (Fahn, 1992). Thicker epidermal cells may also prevent leaves from experiencing excessive sunlight and help control transpiration. As shown in Table 1, each species experiences different adaptation to water stress on mined sites.

3.2 Root conductivity

The average number of root xylem diameter, number of root xylem bundles and root diameter of all three species grown on mined sites were smaller than those at unmined sites (Table 2). Root xylem diameter and the number of root xylem bundles of *S. grande* grown on mined sites were significantly different from those of unmined sites. The root diameter of *V. pinnata* was significantly different from that of unmined sites (Figure 2c). As the root xylem diameter has a positive correlation with water conductivity (Eshel et al., 2000), reduced root xylem diameter appears to be a strategy to reduce water conductivity in a water limited condition. Banon et al. (2004) mentioned that water stress on *L. creticus* causes the increase of root and shoot xylem density. The increase of root xylem density and diameter might be one response to water stress. Less water availability may be followed with an increased number and diameter of root xylem bundles.

The root conductivity and root conductivity ratio of *V. pinnata* grown on a mined site were bigger than those on an unmined site; only the root conductivity ratio of *C. inophyllum* at the unmined site was slightly below that from the mined one (Table 2). Although there was not a significant difference between mined and unmined readings of any native tree species, root conductivity of *S. grande* on a mined site was nearly one fourth of that on an unmined one, whereas *C. inophyllum* on mined sites was three quarters and *V. pinnata* were almost half of those on unmined sites. Among the three species, the root conductivity ratio of *S. grande* on mined site was the most reduced.

The horizontal growth of root on a mined site seems to be reduced, and the high soil temperature was among the main factors influencing (Fitter and Hay, 1991) as the tin tailing temperature may reach 45°C (Nurtjahya et al., 2008c), and it is possible that more energy was used to support the vertical growth of root on a nutrient-limited site (Goldsworthy and Fisher, 1984). In mined sites, the xylem diameter reduction is possibly to keep transpiration low.

Table 2 Root xylem diameter, root xylem bundles, root diameter, root conductivity and root conductivity ratio of five-year old *S. grande*, *C. inophyllum*, and *V. pinnata* saplings grown on tin-mined and unmined sites

	Unit	<i>S. grande</i>		<i>C. inophyllum</i>		<i>V. pinnata</i>	
		Mined	Unmined	Mined	Unmined	Mined	Unmined
Xylem diameter	µm	49.2	* 71.9	40.5	41.0	52.9	71.5
Xylem bundles		59.3	* 103.7	41.3	52.7	83.3	123.3
Root diameter	µm	713.3	893.3	720.0	860.0	616.7	* 923.3
Root conductivity	µm ²	112,592.6	420,401.7	52,998.8	69,498.1	298,518.1	669,247.4
Root conductivity ratio		0.28	0.67	0.13	0.12	0.61	0.74

Asterix (*) indicates that means was significantly different between treatments (0.05)

3.3 Chlorophyll and nitrogen contents

The chlorophyll and nitrogen contents of *S. grande* leaves grown on mined sites were greater than those on unmined sites, whereas the chlorophyll and nitrogen contents of *C. inophyllum* and *V. pinnata* leaves grown on mined sites were smaller than those on unmined sites, with significant difference shown on *V. pinnata* (Table 3).

The lower chlorophyll and nitrogen contents of *C. inophyllum* and *V. pinnata* leaves grown on mined sites may be due to limited nitrogen on mined sites, which may be as low as 0.01% (Nurtjahya et al., 2009). Prsa et al. (2007) mentioned the positive correlation between the available soil nitrogen and chlorophyll, and the nitrogen contents on leaves. The slightly higher chlorophyll and nitrogen contents on *S. grande* leaves grown on mined site may be due to the intra-specific competition on unmined site.

Table 3 Chlorophyll and nitrogen contents of five-year old *S. grande*, *C. inophyllum*, and *V. pinnata* saplings grown on tin-mined and unmined sites

	Chlorophyll ($\mu\text{mol.100 cm}^{-2}$)		Nitrogen (%)	
	Mined	Unmined	Mined	Unmined
<i>S. grande</i>	6.86	6.72	1.20	1.16
<i>C. inophyllum</i>	2.29	5.02	1.14	1.15
<i>V. pinnata</i>	4.57	*	5.77	1.59

Asterix (*) indicates that means was significantly different between treatments (0.05)

3.4 Plant growth

Five years after planting, *S. grande* showed a much wider canopy area (7.64 m²) compared to the canopy area of *C. inophyllum* (2.03 m²) and that of *V. pinnata* (3.28%). The plant height and stem diameter of *S. grande* grown on mined sites were also higher than the other two species (Table 4). The effect of mined soil on plant growth was clearly shown with *S. grande* and *C. inophyllum*, however its effect on *V. pinnata* was not clearly shown due to interspecific and intraspecific competition on the unmined sites.

The growth rate and the survival rate of those species were not different since the first year (Nurtjahya et al., 2008b). At the end of year one, the canopy area of *S. grande* was 0.25 m² and its survival was 90.2%; the canopy area of *C. inophyllum* was 0.13 m² and its survival rate was 99.3%, and the canopy area of *V. pinnata* was 0.07 m² and its survival rate was 68.8% (Nurtjahya et al., 2008b).

Based on plant growth, the best performance was from *S. grande*, followed by *C. inophyllum* and *V. pinnata*.

Table 4 Plant height, stem diameter and cover area of five-year old *S. grande*, *C. inophyllum*, and *V. pinnata* saplings grown on tin-mined and unmined sites

	Height (m)		Stem Diameter (mm)		Cover Area (m ²)	
	Mined	Unmined	Mined	Unmined	Mined	Unmined
<i>S. grande</i>	5.4	6.88	66.8	62.4	7.64	2.98
<i>C. inophyllum</i>	3.43*	6.5	28.6*	110.6	2.03	6.64
<i>V. pinnata</i>	1.35	1.55	44.9	35.8	3.28	1.45

Asterix (*) indicates that means was significantly different between treatments (0.05)

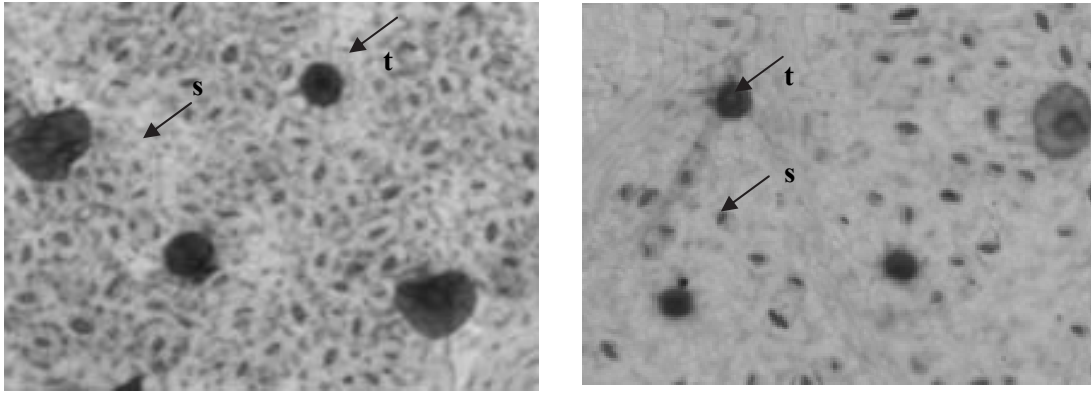


Figure 2a Lower paradermal of *V. pinnata*, left = mined; right = unmined site; s = stomata; t = trichome; note: double of stomatal density on the left

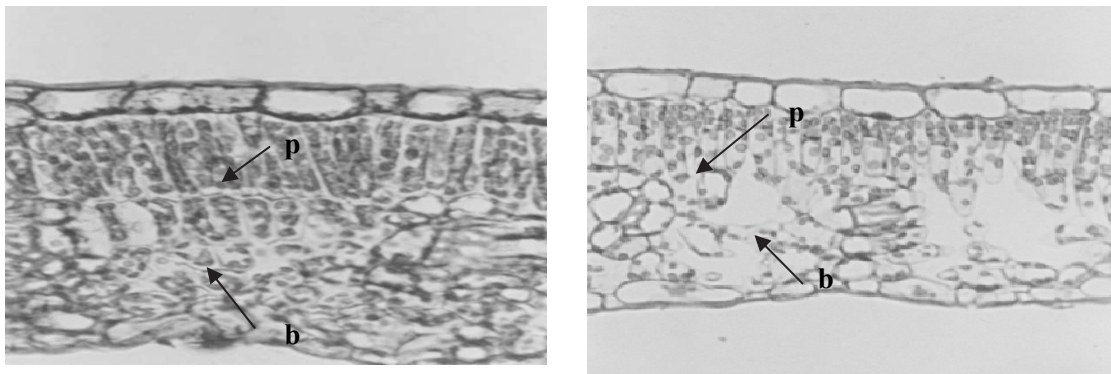


Figure 2b Leaf transversal of *V. pinnata*, left = mined; right = unmined site; p = palisade tissues; b = spongy tissues; note: longer and nearly double of palisade tissues thickness on the left

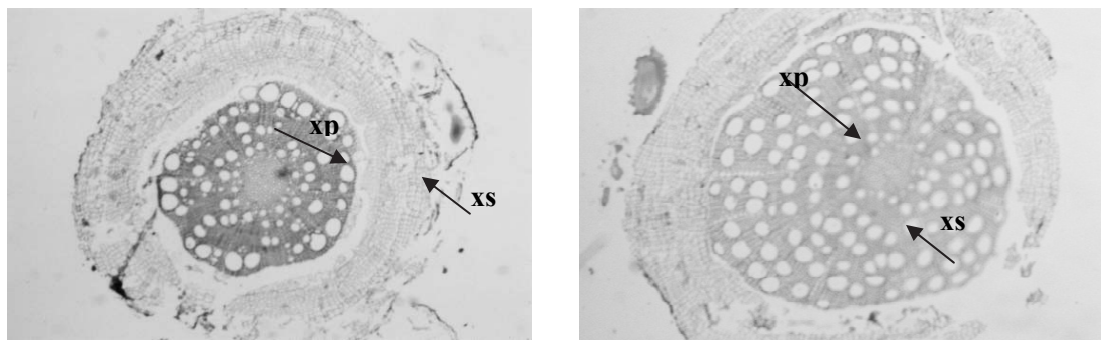


Figure 2c Root cross section of *V. pinnata*, left = mined; right = unmined site; xp = primary xylem; xs = secondary xylem; note: nearly 30 percent reduced xylem diameter, xylem bundles, and root diameter on the left

3.5 Anatomical and physiological versus morphological characters

Adaptation to a dry area that has abundant sunlight was shown by the bigger stomatal density (Heckenberger et al., 1998; Willmer, 1983; Sutcliffe, 1979) to compensate for the decrease of leaf area of those that suffer water stress and need to reduce transpiration (Sutcliffe, 1979). Leaves exposed to full sun light are relatively thicker and have more layers at the mesophyll zone (Dickison, 2000), and the internal leaf changes may relate to photosynthesis efficiency. The thicker palisade cells of plants grown in water stress environments

show their tolerance (Poejiastuti, 1994; Shields, 1950). Palisade cells show longer and more layers (Salisbury and Ross, 1995; Taiz and Zeiger, 2002). The thicker cuticle, which indicates xerophytes (Fahn, 1992), supports the plants during water stress conditions (Imaningsih, 2006). The thicker epidermal cells prevent leaves from excessive sunlight, as well as help control transpiration.

Root xylem diameter has a positive correlation with water conductivity (Eshel et al., 2000), so that the reduced root xylem diameter seems to be a strategy to reduce water conductivity in a water limited condition. The horizontal growth of root on mined site seems to be reduced, and a high soil temperature was among the main factors influencing (Fitter and Hay, 1991) the growth pattern, as the tin tailing temperature may reach 45°C (Nurtjahya et al., 2008c), and it is possible that more energy was used to support the vertical growth of the root on a nutrient-limited site (Goldsworthy and Fisher, 1984). In a mined site, the xylem diameter reduction is possibly a response to keep transpiration low.

Prsa et al. (2007) mentioned the positive correlation between the available soil nitrogen and chlorophyll and the nitrogen contents on leaves.

Based on the anatomical and physiological measurements, the most adapted species was *V. pinnata*, followed by *C. inophyllum* and the least was *S. grande*. However, *S. grande* showed its best performance in plant height, stem diameter, and canopy area, while *C. inophyllum* came to second and the last was *V. pinnata*. The survival rate of those species from year one through to year five validated the plant growth data (Nurtjahya et al., 2008b).

This finding shows that the anatomical and physiological characteristics need to be added to the other parameters, such as transpiration rate, and free proline concentration. The latter could identify the sensitivity or tolerance to water stress (Sukarman et al., 2000).

4 Conclusions

Based on the anatomical and physiological measurements, the most adapted species was *V. pinnata*, followed by *C. inophyllum* and then *S. grande*. Based on data on plant height, stem diameter, canopy area, and survival rate, *S. grande* was the best performer, followed by *C. inophyllum* and then *V. pinnata*. This finding shows that the anatomical and physiological characteristics studied need to be added to other parameters, such as transpiration rate and free proline concentration to understand which plant species would perform better on mined sites.

Acknowledgements

The authors gratefully acknowledge part funding of this research by Bantuan Corporate Social Responsibility of PT Timah (Persero) Tbk., Bangka. Special thanks to the reviewers for their valuable comments on the manuscript.

References

- ASTIRA (2005) Asosiasi Tambang Timah Rakyat. Tambang Rakyat Potensi Terabaikan. Makalah seminar penambangan timah di Pangkalpinang.
- Banon, S., Fernandez, J.A., Franco, J.A., Torrecillas, A., Alarcon, J.J. and Sanchez-Blanco, M.J. (2004) Effects of Water Stress and Night Temperature Preconditioning on Water Relations and Morphological and Anatomical changes of *Lotus creticus* Plants, *Scientia Horticulturae* 101, pp. 333–342.
- Ciha, A.J. and Brun, W.A. (1975) Stomatal Size and Frequency in Soybeans, *Crop Science* 15, pp. 309–313.
- Dickison, W.O. (2000) *Integrative Plant Anatomy*, Tokyo, Academic Press.
- Dobrenz, A.K., Wright, L.N., Humprey, A.B., Massergale, M.A. and Kneebone, W.R. (1969) Stomatal density and its relationship to water use efficiency of blue panigrass (*Panicum antidotale* Retz.), *Crop Science* 9, pp. 354–357.
- Eshel, A., Shick, I. and Waisel, Y. (2000) The Efficiency of The Water Conducting System of Tomato Roots, A. Stokes (editor), *Kluwer Academic Publishers*, Dordrecht, pp. 371–375.
- Fahn, A. (1992) *Anatomi Tumbuhan Jilid 3*, Yogyakarta, Gadjah Mada University Press, 943 p.
- Fitter, A.H. and Hay, R.K.M. (1991) *Fisiologi Lingkungan Tanaman*, Yogyakarta, Gajah Mada University Press. Terjemahan dari: *Environmental Physiology of Plants*, 421 p.
- Goldsworthy, P.R. and Fisher, N.M. (1984) *Fisiologi Tanaman Budidaya Tropik*, Yogyakarta: Gadjah Mada University Press.

- Heckenberger, U., Roggatz, U. and Schurr, U. (1998) Effect of Drought Stress on The Cytological Status in *Ricinus communis*, *Journal of Experimental Botany* 49(319), pp. 181–189.
- Imaningsih, W. (2006) Studi Banding Sifat Ketahanan Struktural Terhadap Kekeringan antara Varietas Padi Sawah dan Padi Gogo Berdasarkan Struktur Anatomi Daun, *Bioscientiae* 3, pp. 47–58.
- Johansen, D.A. (1940) *Plant Microtechnique*, New York: McGraw-Hill Book Company Inc.
- Juairiah, L., Nurtjahya, E., Prawitasari, T. and Dorly (2005) Konduktivitas Xilem Akar dan Batang Tumbuhan Pionir di Lahan Pasca Penambangan Timah di Desa Sempan, Bangka, *Proceeding of Seminar MIPA Nasional 2005*, November 2005, Universitas Indonesia, Jakarta, 4 p.
- Khemmark, C. and Sahunalu, P. (1988) Revegetation trials for tin mine tailings reclamation in Thailand, *Proceedings of Regional Workshop on Ecodevelopment Process for Degraded Land Resources in Southeast Asia*, S. Adisoemarto (ed), August 1988, Bogor.
- Lamb, D. and Tomlinson, M. (1994) Forest rehabilitation in the Asia-Pacific region: past lessons and present uncertainties, *Journal of Tropical Forest Science* 7, pp. 157–170.
- Latifah, S. (2000) Keragaan pertumbuhan *Acacia mangium* Willd. pada lahan bekas tambang timah (studi kasus di areal kerja PT Timah Tbk.) (tesis, Institut Pertanian Bogor, Bogor).
- Metro Bangka Belitung (2008) Edisi Khusus Bangka Goes Green, Bangka Goes Green, Pangkalpinang, Edisi Khusus.
- Mitchell, B.A. (1959) The ecology of tin mine spoil heaps. Part I sand and gravel tailings, *Malayan Forestry* 22, pp. 111–132.
- Nurtjahya, E. (2008) Revegetasi Lahan Pasca Tambang Timah dengan Beragam Jenis Pohon Lokal di Pulau Bangka, Sekolah Pascasarjana Institut Pertanian Bogor, Bogor. PhD thesis (unpublished).
- Nurtjahya, E., Agustina, F. and Putri, W.A.E. (2008a) Neraca Ekologi Penambangan Timah Di Pulau Bangka - Studi kasus pengalihan fungsi lahan di ekosistem darat, *Berkala Penelitian Hayati* 14(1), pp. 29–38.
- Nurtjahya, E., Setiadi, D., Guhardja, E., Muhadiono and Setiadi, Y. (2009) Succession on tin-mined land in Bangka Island, *Blumea* 54(1–3), pp. 131–138.
- Nurtjahya, E., Setiadi, D., Guhardja, E., Muhadiono and Setiadi, Y. (2008b) Establishment of four local tree species for potential revegetating of tin-mined land in Bangka Island, Indonesia, *Proceedings Third International Seminar on Mine Closure (Mine Closure 2008)*, A.B. Fourie, M. Tibbett, I.M. Weiersbye and P. Dye (eds), 14–17 October 2008, Johannesburg, South Africa, Australian Centre for Geomechanics, Perth, pp. 751–758.
- Nurtjahya, E., Setiadi, D., Guhardja, E., Muhadiono and Setiadi, Y. (2008c) Revegetation of tin-mined land using various local tree species in Bangka Island, Indonesia, *Proceedings of the 2008 National Meeting of the American Society of Mining and Reclamation*, Richmond VA, *New Opportunities to Apply Our Science*, R.I. Barnhisel (ed), June 2008, ASMR, Lexington, pp. 739–755.
- Nurtjahya, E., Setiadi, D., Guhardja, E., Muhadiono and Setiadi, Y. (2007) Populasi Collembola di Lahan Revegetasi Tailing Timah di Pulau Bangka, *Biodiversitas* 8(4), pp. 309–313.
- Pangkalpinang Meteorology Station (2006) Data iklim Bangka 1996–2005, 10 p.
- Poejiastuti, E. (1994) Studi Komparatif Anatomi Daun Beberapa Genotif Kedelai (*Glycine max* (L.) yang Peka dan Toleran terhadap Cekaman Kekeringan [skripsi], Bogor, Institut Pertanian Bogor, FMIPA.
- Prsa, I., Stampar, F., Vodnik, D. And Veberic, R. (2007) Influence of Nitrogen on Leaf Chlorophyll Content and Photosynthesis of 'Golden Delicious' Apple, *Acta Agriculturae Scandinavica*, Section B - Plant Soil Science 57(3), pp. 283–289.
- Roemantyo, Uji, T., Noerdjito, M. and Utaminigrum, H.I.P. (2004) Indonesia biodiversity information system (IBIS) case study: vegetation diversity of Bangka Island, Bangka-Biliton, Indonesia, *Proceedings of International Symposium 2004 Asian Plant Diversity and Systematics*, August 2004, Japan, 10 p.
- Salisbury, F.B. and Ross, C.W. (1995) *Fisiologi Tumbuhan*, Penerbit ITB, Bandung, 343 p.
- Sass, J.E. (1951) *Botanical Microtechnique*, Ames Iowa: The Iowa State College Press.
- Setiawan, I.E. (2003) Evaluasi tingkat keberhasilan revegetasi pada lahan bekas tambang timah PT Koba Tin, Koba, Bangka Belitung. skripsi, Institut Pertanian Bogor, Bogor.
- Shields, L.M. (1950) Leaf Xeromorphy as Related to Physiological and Structural Influences, *Botany Review* 16, pp. 399–447.
- Sims, D.A. and Gamon, J.A. (2002) Relationships between Leaf Pigment Content and Spectral Reflectance Across a Wide Range of Species, Leaf Structures and Developmental Stages, *Remote Sensing of Environment*, 81, pp. 337–354.
- Sukarman, Darwati, I. and Rusmin, D. (2000) Karakter Morfologi dan Fisiologi Tapak Dara (*Vinca rosea* L.) pada Beberapa Cekaman Air, *Jurnal Litri* 6(2), pp. 50–54.
- Sutcliffe, J.F. (1979) *Plants and Water* 2nd edition, Edward Arnold, London.
- Taiz, L. and Zeiger, E. (2002) *Plant Physiology*, California, The Benjamin/ Cummings Pub. Co. Inc., 559 p.
- Willmer, C.M. (1983) *Stomata*. Longman Inc., New York, 166 p.

Author Index — Volume 1

Acton, C.A.	65	Finucane, S.	393
Ade, F.	595	Fitch, M.	595
Ainscough, T.	393	Flemming, L.	245
Ames, S.	271	Freberg, M.	3
Amponsah, I.G.	125	Freeman, S.	271
Anderson, B.	191	Friese, K.	555
Anderson, H.B.	65, 125	Garrah, K.L.	11
Anderson, M.	271	Gibeau, P.	27
Aubertin, M.	313, 323	Gillow, J.	389
Ayres, B.	503	Gjerapic, G.	303
Barbour, S.L.	57	Golby, S.	433
Beersing, A.	595	Greer, C.W.	19
Bergstro, D.W.	125	Grindley, P.	633
Bjelkevick, A.G.	353	Guillen, G.	239
Boehrer, B.	555	Hachey, L.M.	403
Boorman, J.G.	525	Hackbarth, D.	209
Borges, L.	111	Haekel, G.	573
Borstad, G.	3	Hamman, J.N.	413
Boshoff, J.C.J.	413	Hancock, G.R.	613
Braimbridge, M.F.	153	Hartmaier, H.	485
Brand, D.	209, 219	Hastie, J.	181
Brett, D.	623, 633	Hornung, J.	573
Brinker, C.J.	133, 525	Johnson, D.	495
Brown, L.	3	Jones, C.E.	255
Bruce, I.	485	Jones, D.R.	613
Buchko, J.	603	Kabwe, L.K.	473
Buffalo, K.	255	Kam, S.	361
Burton, J.	333	Kansas, J.L.	423
Bussière, B.	313, 323	Keefer, M.E.	27
Callery, S.	227	Kennedy, A.D.	27
Cameron, M.	245	Khasa, D.P.	19
Campbell, D.	11	Kimaro, A.A.	37
Caro-Riano, H.	291	Kojansow, J.	281
Carpenter, D.J.	389	Koschorreck, M.	555
Ceri, H.	433	Lahaie, R.	473
Chanasyk, D.S.	181	Laing, M.D.	85
Charette, T.	455, 573	Landine, P.	47
Connors, K.	545	Lanoue, A.V.	403
Coulthard, T.J.	613	Lardner, T.D.	153
Creek, M.	303	Leskiw, L.A.	57, 163
Daly, C.A.	535	Lowry, J.B.C.	613
Dhadli, N.	373	Ludwig, B.	209
Dickson, J.	3	Lund, M.A.	581
Donahue, R.	473	MacKenzie, D.D.	93, 125, 171
Donald, G.	101	MacLean, M.I.A.	255
Dorly	75	Mansur, H.I.	281
Drozdowski, B.L.	143	Mao, Y.	361
Ehman, C.	291	Marques, L.L.R.	291, 433
Errington, J.C.	255	Martell, P.	3
Etcheverry, D.J.	383	Martínez de S. Álvarez, M.	3
Etmanski, A.	219	Matthews, J.	373
Eulitz, K.	581	May, L.L.	65
Farnham, B.	513	McClure, T.	433
Faught, R.L.	143	McClough, C.D.	581
Fenske, D.	47	McGrath, J.	271

McKenna, G.	603	Tedder, W.S.	65, 181
McLeary, M.	623, 633	Tibbett, M.	153, 199
McLeod, S.	513	Tindal, M.J.	209
Memel, O.	85	Trites, M.	573
Middleton, C.	181	Turner, R.J.	433
Mohamedelhassan, E.	443	Tuttle, S.	463
Mokgalaka, N.S.	85	Twaroski, C.J.	565
Molson, J.	313, 323	Umedera, M.	513
Moody, R.	27	Underwood, A.	143
Müller, M.	581	Van Gulck, J.	375
Munnoch, K.G.	545	Van Stone, R.	47
Naeth, M.A.	171	Vlahos, S.	153
Nahir, M.	503	Warner, C.	65
North, R.	245	Wells, S.	191
Nurtjahya, E.	75	Wendt-Potthoff, K.	555
O’Kane, M.	373, 503, 623, 633	West, S.	485
Onwuchekwa, N.	19	Wheston, S.	227
Oosterbroek, L.	291	Wickham, M.	303
Pabst, T.	313, 323	Wilkins, J.	245
Paquin, L.D.	133	Williams, D.J.	333, 623, 633
Penney, K.D.	443	Wilson, D.	271
Pollo, H.N.	281	Wilson, G.W.	473
Polster, D.	263	Wiryanto, K.	393
Prasad, A.	343	Woloshyn, K.	485
Poscente, M.	455	Woosaree, J.	191
Purdy, B.	603	Worthington, T.R.	153
Qualizza, C.	57	Wytrykush, C.	573
Quoreshi, A.	19	Zelege, T.B.	163
Regnier, T.C.	85	Zettl, J.D.	57
Renaud, S.E.	545	Zwiazek, J.	19
Renkema, K.N.	93	Zwierink, M.	291
Robika.	75		
Rohde, T.K.	333		
Roy, S.	19		
Salifu, K.F.	19, 37, 65, 181, 191		
Sawatsky, L.	595		
Schmitt, R.	271		
Schultze, M.	555		
Scordo, E.	603		
Scott, P.	623, 633		
Segroves, L.I.	565		
Sherriff, B.L.	383		
Shuttleworth, D.	603		
Sidenko, N.V.	383		
Soeprapto, P.	393		
Sompie, D.	281		
Song, Q.	373		
Spain, A.V.	199		
Staley, S.	513		
Stasik, S.	555		
Stenroos, P.	433		
Straker, J.	101, 603		
Symbaluk, M.D.	423, 525		
Tashe, N.	111		
Taylor, J.R.	623, 633		

July 19, 2011

Project No. IP2-25345

Mr. Eddy Nurtjahya
Universitas Bangka Belitung
Jalan Merdeka No. 4
Pangkalpinang 33125
Indonesia

RE: LETTER OF INVITATION FOR MR. EDDY NURTJAHYA

Dear Mr. Nutjahya:

I am pleased to invite you and confirm your registration to participate in the 2011 Mine Closure Conference (Mine Closure 2011) which will be held September 18 to 21, 2011 at the Fairmont Chateau Lake Louise in Lake Louise, Alberta, Canada. Your registration confirmation number is: **HSNNRMWXJZX**. Presently, the time table for your oral presentation at the conference entitled "Can Anatomical and Physiological Characters Predict Plant Adaptation on Tin-mined Land in Bangka Island?" has not been assigned.

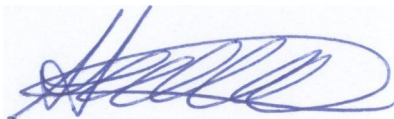
Mine Closure 2011 offers a forum for the professional exchange of knowledge and skills related to mine closure. Over 500 people are expected to be in attendance from over 15 countries. Conference delegates will have the opportunity to learn from 150+ technical presentations including workshops, panel discussions and site tours.

Depending on where you reside, you will need to meet certain entry requirements to visit Canada. Detailed information on travel to Canada, including visa information, can be found on the Citizenship and Immigration Canada Web site at <http://www.cic.gc.ca/english/visit/index.asp>.

Please note that we are unable to cover any costs related to your participation in this conference. Costs related to travel, accommodation, transportation and conference registration will be your responsibility.

I look forward to your participation in Mine Closure 2011.

Sincerely,



Les Sawatsky
Mine Closure 2011, Conference Chair
Golder Associates Ltd.
102, 2535 – 3rd Avenue S.E.
Calgary, Alberta, Canada T2A 7W5
Phone: +1 403 299 4648
Email: les_sawatsky@golder.com

CP/LS/sp

r:\active\ip projects\ip225345 mine closure 2011\1000 main conference\0000 administration\letters of invitation\letter of invitation - mc 2011 - mr. eddy nurtjahya.docx



Daily Schedule

	Friday September 16	Saturday September 17	Sunday September 18
Registration / Information Desk	5:00 pm — 7:00 pm	7:00 am — 9:00 am 3:00 pm — 5:00 pm	7:00 am — 9:00 am 3:00 pm — 8:00 pm
Short Courses*			
Pit Lakes and Mine Closure: Design and Management		8:30 am — 5:00 pm	
Health and Environmental Risk Assessment Fundamentals in Mine Closure		8:30 am — 4:30 pm	
Environmental Geochemistry and Geochemical Modeling		8:30 am — 4:00 pm	
Fundamentals of Oil Sands Tailings		8:30 am — 4:30 pm	
Cover System Design for Mine Closure			8:30 am — 4:30 pm
Geomorphic Approach to Landform Design and Closure Drainage			8:30 am — 4:30 pm
Mine Water Management for Closure			8:30 am — 4:30 pm
Natural Processes for the Restoration of Drastically Disturbed Site			8:30 am — 5:00 pm
Technical Tours			
Technical Tour of Suncor's Reclaimed Tailings Ponds - Fort McMurray, AB		6:30 am — 8:30 pm	
Welcome Reception			7:00 pm — 10:00 pm Royal Canadian

*Note: Additional registration is required to participate in the short courses. (Short courses are not part of the main conference and are not included in the conference registration fee.)

	Monday September 19	Tuesday September 20	Wednesday September 21	Thursday September 22
Registration / Information Desk	7:00 am — 5:00 pm	7:00 am — 5:00 pm	7:00 am — 4:00 pm	
Cyber Café	7:00 am — 5:00 pm	7:00 am — 5:00 pm	7:00 am — 4:00 pm	
Keynote Presentation(s)	8:00 am			
Plenary Sessions	8:00 am — 12:00 pm	8:00 am — 12:00 pm	1:15 pm — 4:00 pm	
Technical Sessions	1:20 pm — 4:30 pm	1:30 pm — 4:30 pm	8:00 am — 11:50 am	
Luncheon Speaker	12:00 pm — 1:20 pm	12:00 pm — 1:30 pm	11:50 am — 1:15 pm	
Networking Receptions and Dinner	6:30 pm — 10:00 pm Wild West	6:30 pm — 10:00 pm Taste of Canada		
BHP Billiton Diamond Draw			4:00 pm	
Table Top Exhibits	8:00 am — 5:00 pm	8:00 am — 5:00 pm	8:00 am — 4:00 pm	
Author Breakfast Meeting**	6:30 am — 8:00 am	6:30 am — 8:00 am	6:30 am — 8:00 am	
Guest Program				
Willow Steam Spa Day		9:00 am — 2:00 pm		
Traditional English Afternoon Tea***		3:00 pm — 4:30 pm		
Decadent Desserts - Cooking Demonstration***			10:00 am — 11:30 am	
Technical Tours				
Tour of reclaimed Gregg River and Luscar Mines and Operating Cheviot Mine Tour - Hinton, AB				6:00 am — 10:30 pm
Kimberley Underground Mining Railway and Sullivan Mine Tour - Kimberley, BC				6:00 am — 10:00 pm

**Note: These breakfasts are by invitation only and are intended for the authors that will be presenting during their technical session that day.

***Note: Activities are available only to preregistered participants.

The importance of the...
...
...

...



...

...



2011 MINE CLOSURE CONFERENCE