

Foto SEM cangkang karet

Foto SEM cangkang karet menampilkan strukturmikro berpori dengan ukuran yang bervariasi dengan kandungan unsur carbon yang relatif tinggi.

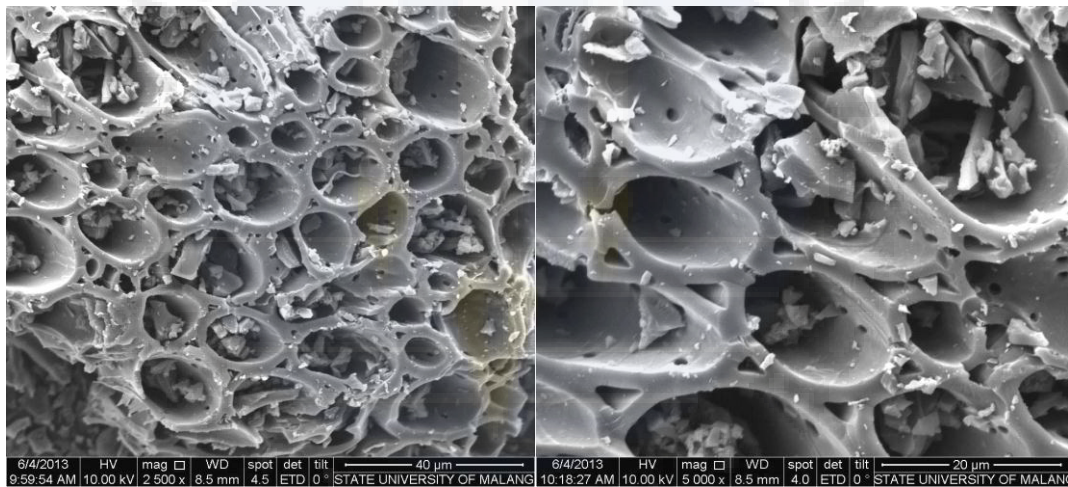


Foto SEM cangkang karet

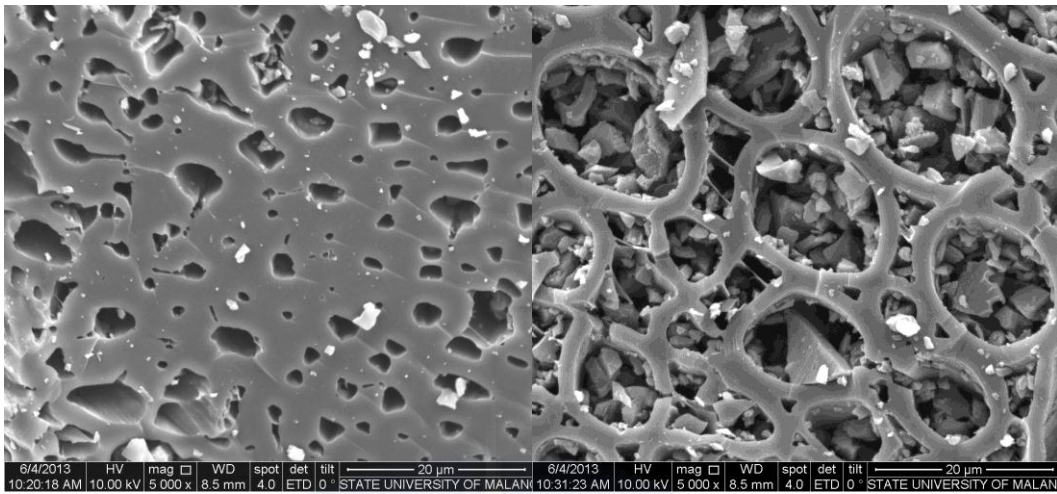
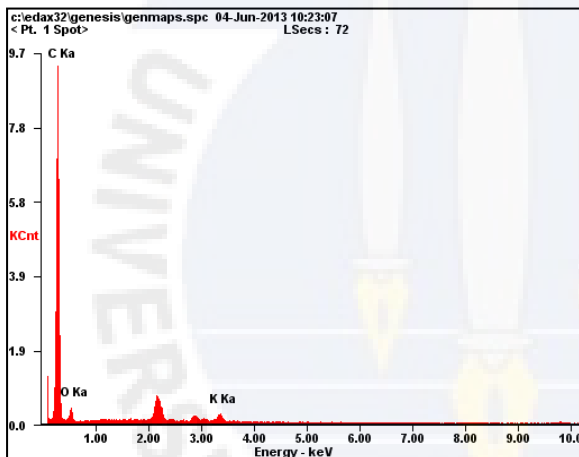


Foto SEM cangkang karet

Hasil SEM-EDS cangkang karet



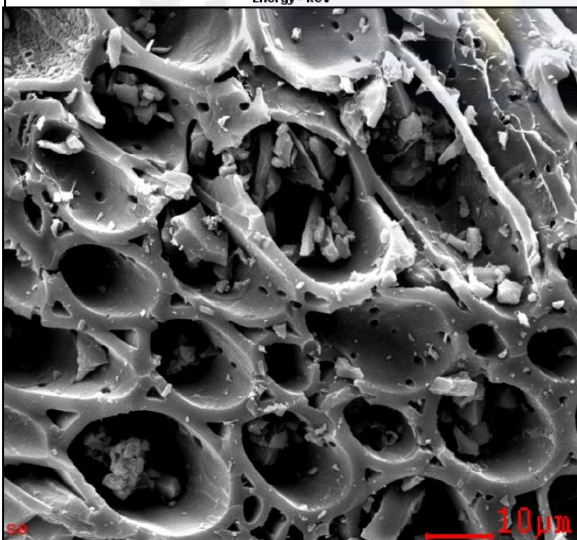
<i>Element</i>	<i>Wt%</i>	<i>At%</i>
<i>CK</i>	88.69	92.22
<i>OK</i>	09.04	07.06
<i>KK</i>	02.27	00.72
<i>Matrix</i>	Correction	ZAF

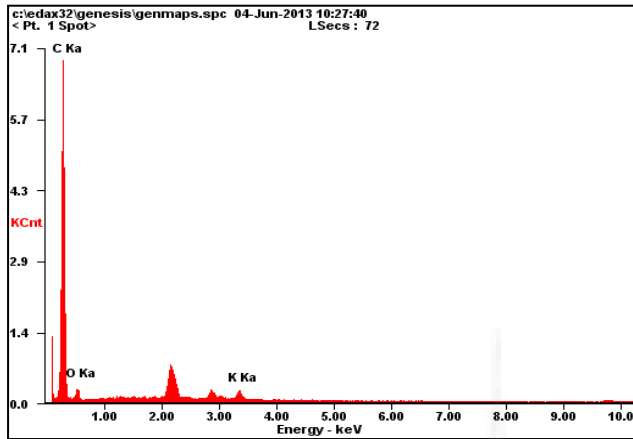
ZAF: matrix correction factor

Z: Atomic number correction

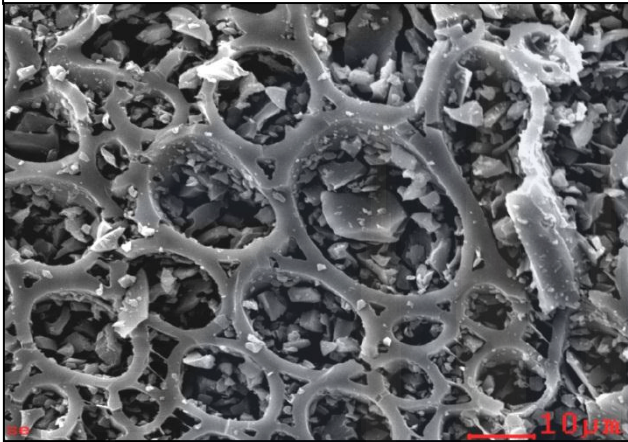
A: Absorption correction

F: Characteristic fluorescence correction

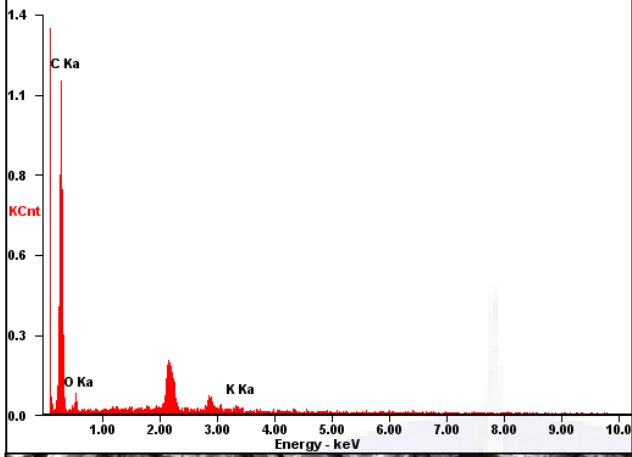




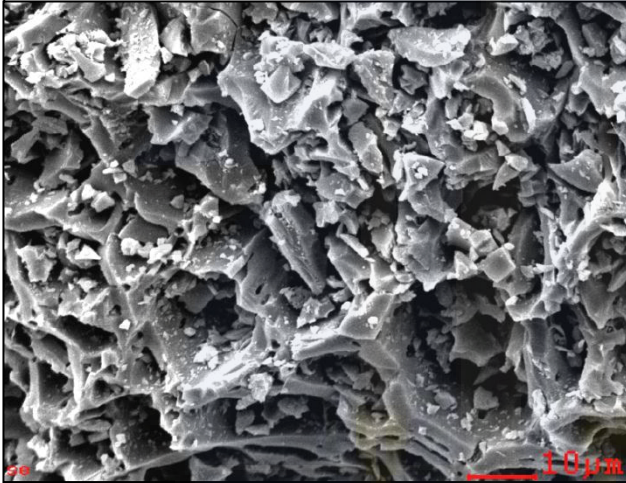
<i>Element</i>	<i>Wt%</i>	<i>At%</i>
<i>CK</i>	88.03	91.95
<i>OK</i>	09.08	07.12
<i>KK</i>	02.88	00.93
<i>Matrix</i>	Correction	ZAF



c:\edax32\genesis\genmaps.spc 04-Jun-2013 10:34:44
<Pt. 1 Spot> LSecs : 75



<i>Element</i>	<i>Wt%</i>	<i>At%</i>
<i>CK</i>	88.78	93.34
<i>OK</i>	06.51	05.14
<i>KK</i>	04.71	01.52
<i>Matrix</i>	Correction	ZAF



UNIVERSITAS BANGKA BELITUNG

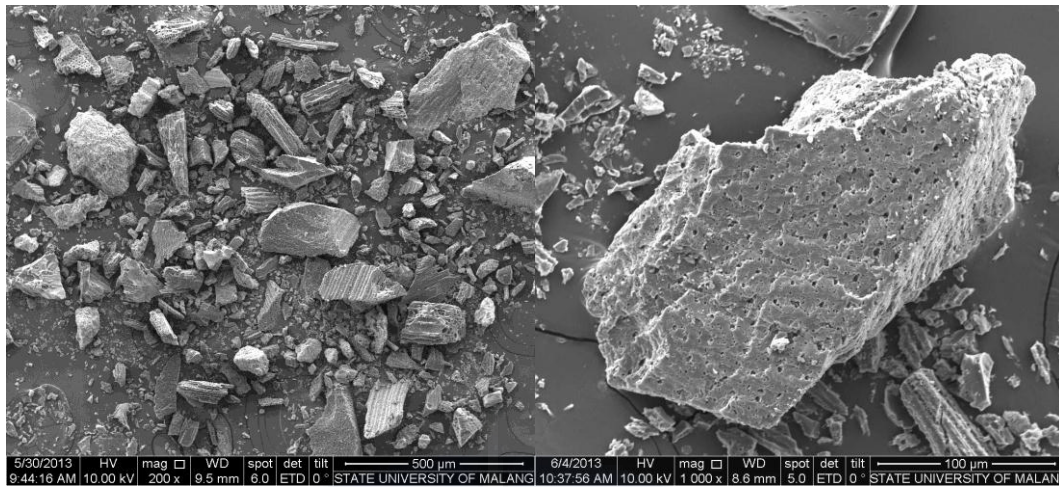


Foto SEM tempurung kemiri

Foto SEM cangkang kemiri menampilkan strukturmikro berpori dengan ukuran yang bervariasi. Pada salah satu pecahan cangkang kemiri ditemukan strukturmikro yang berbeda (gb hal 4); berbentuk partikel bulat dengan diameter sekitar 15 μm dan permukaan berpori dengan ukuran pori yang relatif halus.

Hasil analisis SEM-EDS menunjukkan kandungan unsur carbon yang relatif tinggi dengan berbagai unsur pengotor

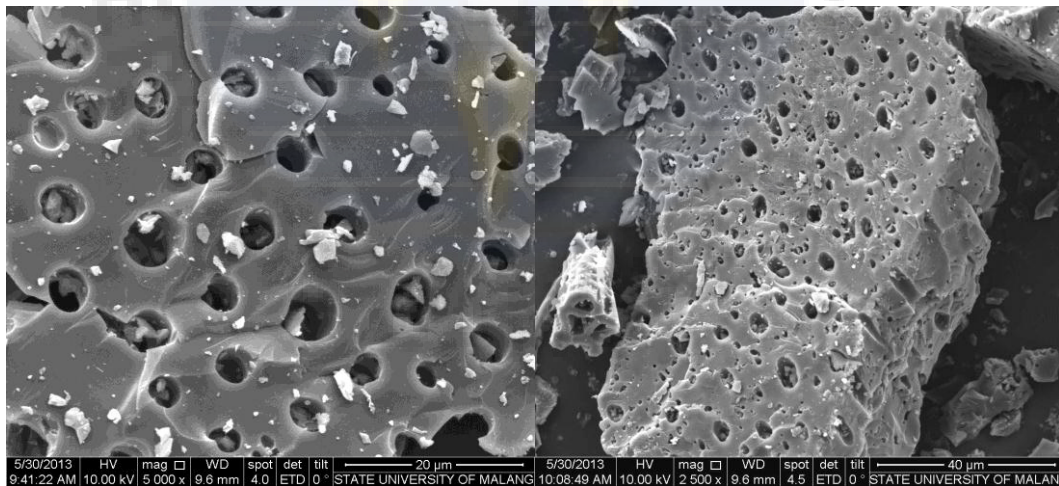


Foto SEM cangkang kemiri

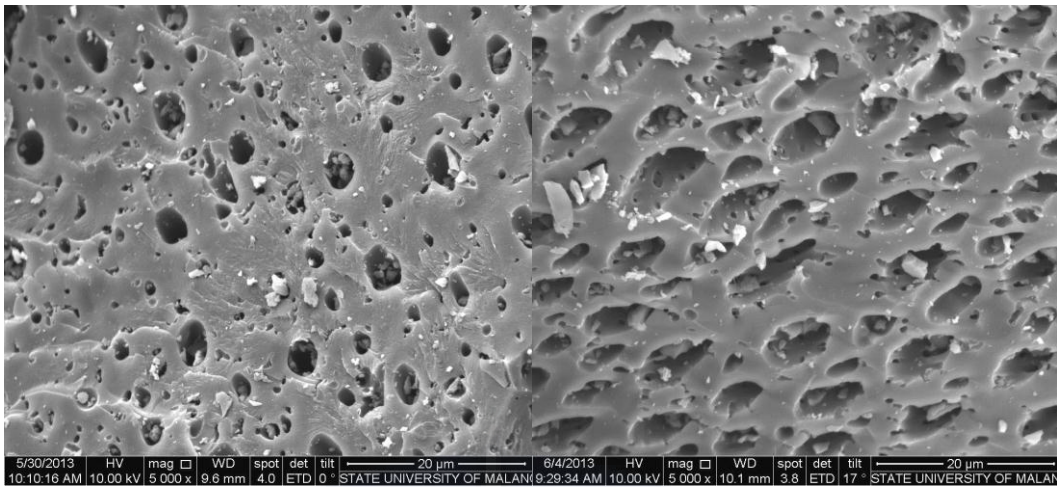


Foto SEM cangkang kemiri

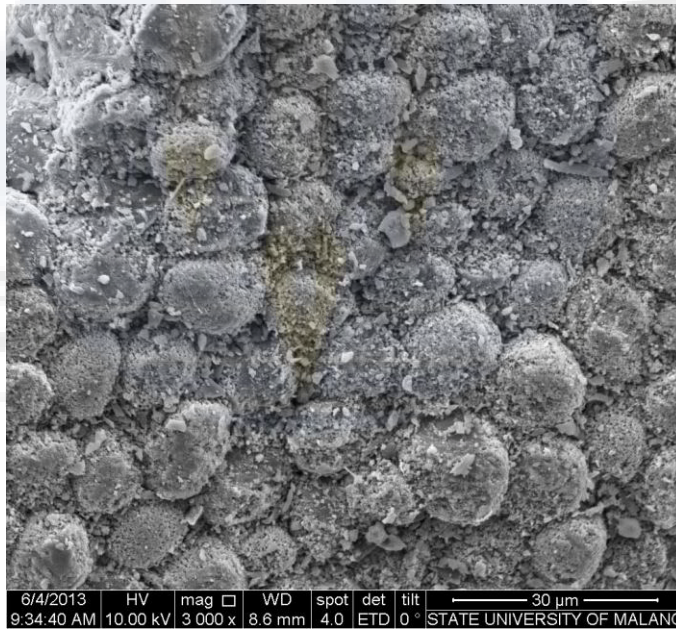
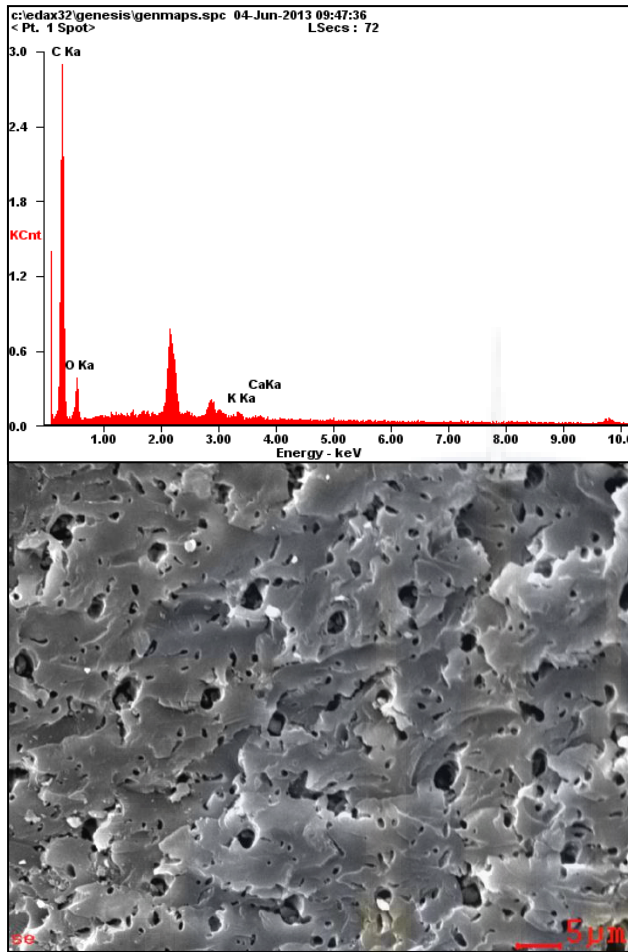


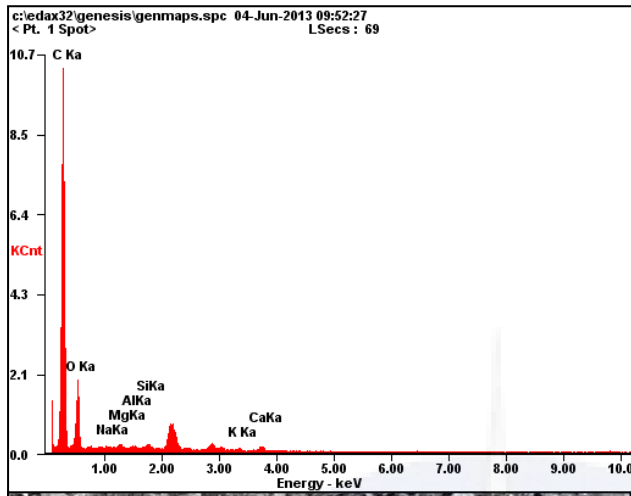
Foto SEM cangkang kemiri



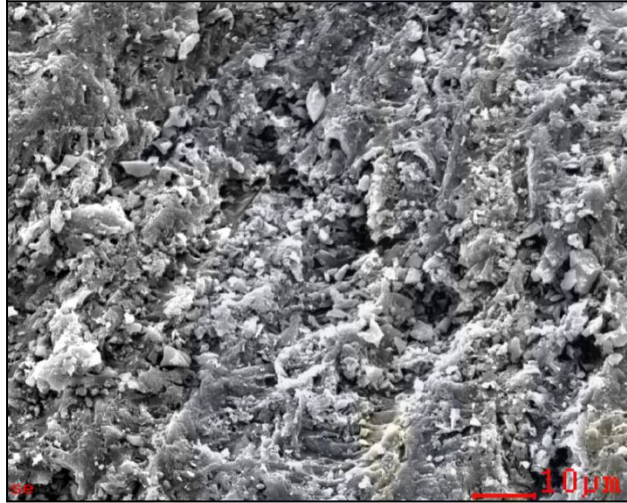
<i>Element</i>	<i>Wt%</i>	<i>At%</i>
<i>CK</i>	79.80	84.92
<i>OK</i>	17.97	14.35
<i>KK</i>	01.38	00.45
<i>CaK</i>	00.85	00.27
<i>Matrix</i>	Correction	ZAF

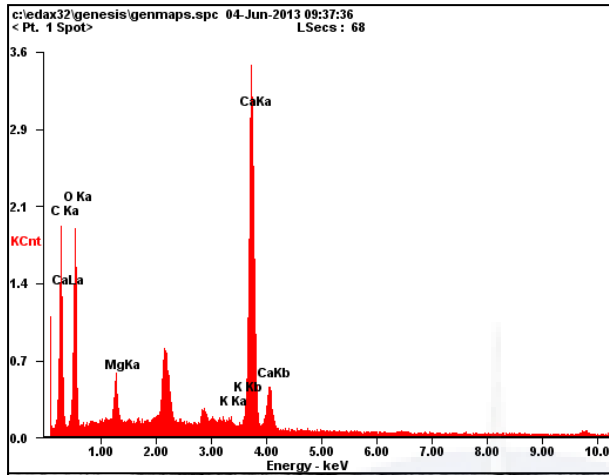
ZAF: matrix correction factor
Z: Atomic number correction
A: Absorption correction
F: Characteristic fluorescence correction





<i>Element</i>	<i>Wt%</i>	<i>At%</i>
<i>CK</i>	75.14	80.87
<i>OK</i>	22.51	18.19
<i>NaK</i>	00.14	00.08
<i>MgK</i>	00.31	00.16
<i>AlK</i>	00.21	00.10
<i>SiK</i>	00.38	00.17
<i>KK</i>	00.31	00.10
<i>CaK</i>	01.00	00.32
<i>Matrix</i>	Correction	ZAF





<i>Element</i>	<i>Wt%</i>	<i>At%</i>
<i>CK</i>	22.47	35.50
<i>OK</i>	38.06	45.14
<i>MgK</i>	02.15	01.68
<i>KK</i>	00.85	00.41
<i>CaK</i>	36.46	17.26
<i>Matrix</i>	Correction	ZAF

